

## Anti-KLF2 Mouse Monoclonal Antibody [Clone ID: OTI3D12]

Catalog Number: M01046-1

### About KLF2

Kruppel-like factors (KLFs) are a family of broadly expressed zinc finger transcription factors. KLF2 regulates T-cell trafficking by promoting expression of the lipid-binding receptor S1P1 (S1PR1; MIM 601974) and the selectin CD62L (SELL; MIM 153240) (summary by Weinreich et al., 2009 [PubMed 19592277]). [supplied by OMIM, Feb 2011]

### Overview

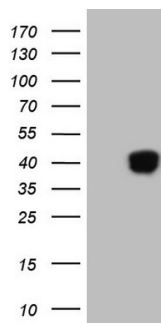
Product Name	Anti-KLF2 Mouse Monoclonal Antibody [Clone ID: OTI3D12]
Reactive Species	Human, Mouse, Rat
Description	Boster Bio KLF2 mouse monoclonal antibody, clone OTI3D12 (formerly 3D12). Catalog# M01046-1. Tested in WB. This antibody reacts with Human, Mouse, Rat.
Application	WB
Clonality	Monoclonal OTI3D12
Formulation	PBS (PH 7.3) containing 1% BSA, 50% glycerol and 0.02% sodium azide.
Storage Instructions	Store at -20°C as received.
Host	Mouse
Uniprot ID	Q9Y5W3

### Technical Details

Immunogen	Full length human recombinant protein of human KLF2 (NP_057354) produced in E.coli.
Isotype	IgG1
Concentration	1 mg/ml
Purification	Purified from mouse ascites fluids or tissue culture supernatant by affinity chromatography (protein A/G)
Suggested Dilutions	Dilute the sample so that the expected range of concentrations fall within the detection range of this kit. If the expected range of concentration is unknown, a pilot test should be conducted to decide the optimal dilution ratio for your samples. Some PubMed article(s) citing the expression level of this target are as follows: Boster Bio's internal QC testing used: WB 1:2000



## Anti-KLF2 Mouse Monoclonal Antibody [Clone ID: OTI3D12] (M01046-1) Images



HEK293T cells were transfected with the pCMV6-ENTRY control (Left lane) or pCMV6-ENTRY KLF2 (Right lane) cDNA for 48 hrs and lysed. Equivalent amounts of cell lysates (5 ug per lane) were separated by SDS-PAGE and immunoblotted with anti-KLF2.

### Submit a product review to Biocompare.com

Submit a review of this product to Biocompare.com to receive a \$20 Amazon.com giftcard! Your reviews help your fellow scientists make the right decisions. Thank you for your contribution.



Anti-KLF2 Mouse Monoclonal Antibody [Clone ID: OTI3D12]