

Anti-LATS1 Antibody (Monoclonal, 31L83)

Catalog Number: M01051

About LATS1

Serine/threonine-protein kinase LATS1 is an enzyme that in humans is encoded by the LATS1 gene. It is mapped to 6q25.1. The protein encoded by this gene is a putative serine/threonine kinase that localizes to the mitotic apparatus and complexes with cell cycle controller CDC2 kinase in early mitosis. The protein is phosphorylated in a cell-cycle dependent manner, with late prophase phosphorylation remaining through metaphase. The N-terminal region of the protein binds CDC2 to form a complex showing reduced H1 histone kinase activity, indicating a role as a negative regulator of CDC2/cyclin A. In addition, the C-terminal kinase domain binds to its own N-terminal region, suggesting potential negative regulation through interference with complex formation via intramolecular binding. Biochemical and genetic data suggest a role as a tumor suppressor. This is supported by studies in knockout mice showing development of soft-tissue sarcomas, ovarian stromal cell tumors and a high sensitivity to carcinogenic treatments.

Overview

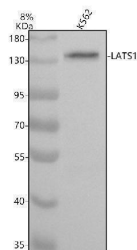
Product Name	Anti-LATS1 Antibody (Monoclonal, 31L83)
Reactive Species	Human, Monkey, Mouse
Description	Boster Bio Anti-LATS1 Antibody (Monoclonal, 31L83) catalog # M01051. Tested in WB applications. This antibody reacts with Human, Mouse, Monkey.
Application	WB
Clonality	Monoclonal 31L83
Formulation	Rabbit IgG in stabilizing components, phosphate buffered saline, pH 7.4, 150mM NaCl, 0.02% sodium azide and 50% glycerol. This antibody is supplied in a stabilized formulation. Compatibility with conjugation reactions depends on the chemistry of the conjugation method used. For conjugation methods that are not compatible with the stabilizing components present in this formulation, a carrier-free antibody format is required.
Storage Instructions	Store at -20°C for one year. For short term storage and frequent use, store at 4°C for up to one month. Avoid repeated freeze-thaw cycles.
Host	Rabbit
Uniprot ID	O95835

Technical Details

Immunogen	Recombinant protein within human LATS1 aa 153-598.
Form	Liquid
Concentration	500 ug/ml

Purification	Protein A affinity purified.
Suggested Dilutions	Western blot, 1:500-2000

Anti-LATS1 Antibody (Monoclonal, 31L83) (M01051) Images



Western blot analysis of LATS1 using anti-LATS1 antibody (M01051). Electrophoresis was performed on a 8% SDS-PAGE gel at 80V (Stacking gel) / 120V (Resolving gel) for 2 hours. The sample well of each lane was loaded with 30 ug of sample under reducing conditions. Lane 1: human K562 whole cell lysates. After electrophoresis, proteins were transferred to a nitrocellulose membrane at 150 mA for 50-90 minutes. Blocked the membrane with 5% non-fat milk/TBS for 1.5 hour at RT. The membrane was incubated with rabbit anti-LATS1 antigen affinity purified monoclonal antibody (M01051) at 1:500 overnight at 4°C, then washed with TBS-0.1% Tween 3 times with 5 minutes each and probed with a goat anti-rabbit IgG-HRP secondary antibody at a dilution of 1:5000 for 1.5 hour at RT. The signal is developed using an ECL Plus Western Blotting Substrate (Catalog # AR1196-200) with Tanon 5200 system. A specific band was detected for LATS1 at approximately 140 kDa. The expected band size for LATS1 is at 127 kDa.

Submit a product review to Biocompare.com

Submit a review of this product to Biocompare.com to receive a \$20 Amazon.com giftcard! Your reviews help your fellow scientists make the right decisions. Thank you for your contribution.



Anti-LATS1 Antibody (Monoclonal, 31L83)

For Research Use Only. Not for use in diagnostic procedures.