

Anti-Chk1 CHEK1 Rabbit Monoclonal Antibody

Catalog Number: M01060

About CHEK1

Activated by icilin, eucalyptol, menthol, cold and modulation of intracellular pH. Involved in menthol sensation. Permeable for monovalent cations sodium, potassium, and cesium and divalent cation calcium.

Overview

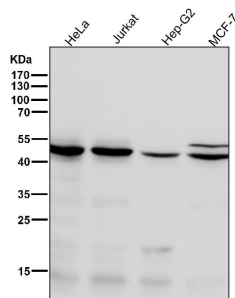
Product Name	Anti-Chk1 CHEK1 Rabbit Monoclonal Antibody
Reactive Species	Human
Description	Boster Bio Anti-Chk1 CHEK1 Rabbit Monoclonal Antibody catalog # M01060. Tested in WB, IHC, ICC/IF, Flow Cytometry applications. This antibody reacts with Human.
Application	Flow Cytometry, IF, IHC, ICC, WB
Clonality	Monoclonal E1B-3
Formulation	Rabbit IgG in phosphate buffered saline, pH 7.4, 150mM NaCl, 0.02% sodium azide and 50% glycerol, 0.4-0.5mg/ml BSA.
Storage Instructions	Store at -20°C for one year. For short term storage and frequent use, store at 4°C for up to one month. Avoid repeated freeze-thaw cycles.
Host	Rabbit
Uniprot ID	O14757

Technical Details

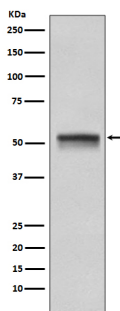
Immunogen	A synthesized peptide derived from human Chk1
Isotype	Rabbit IgG
Form	Liquid
Concentration	Actual concentration vary by lot. Use suggested dilution ratio to decide dilution procedure.
Purification	Affinity-chromatography
Suggested Dilutions	Dilute the sample so that the expected range of concentrations fall within the detection range of this kit. If the expected range of concentration is unknown, a pilot test should be conducted to decide the optimal dilution ratio for your samples. Some PubMed article(s) citing the expression level of this target are as follows: Boster Bio's internal QC testing used: WB 1:500-1:2000

	IHC 1:50-1:200 ICC/IF 1:50-1:200 FC 1:50
--	--

Anti-Chk1 CHEK1 Rabbit Monoclonal Antibody (M01060) Images



All lanes use the Antibody at 1:1K dilution for 1 hour at room temperature.



Western blot analysis of Chk1 expression in HeLa cell lysate.

Submit a product review to Biocompare.com

Submit a review of this product to Biocompare.com to receive a \$20 Amazon.com giftcard! Your reviews help your fellow scientists make the right decisions. Thank you for your contribution.



Anti-Chk1 CHEK1 Rabbit Monoclonal Antibody