

Anti-ACTA2 Rabbit Monoclonal Antibody, Clone#RM253

Catalog Number: M01072-4

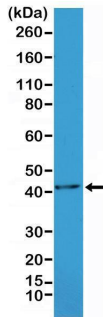
Overview

Product Name	Anti-ACTA2 Rabbit Monoclonal Antibody, Clone#RM253
Reactive Species	Human, Mouse
Description	Boster Bio Anti-ACTA2 Rabbit Monoclonal Antibody, Clone#RM253 (Catalog # M01072-4). Tested in IHC, WB applications. This antibody reacts with Human, Mouse.
Application	IHC, WB
Clonality	Monoclonal RM253
Formulation	50% Glycerol/PBS with 1% stabilizing protein and 0.09% sodium azide This antibody is supplied in a stabilized formulation. Compatibility with conjugation reactions depends on the chemistry of the conjugation method used. For conjugation methods that are not compatible with the stabilizing components present in this formulation, a carrier-free antibody format is required.
Storage Instructions	Store at -20°C for one year. Avoid repeated freeze-thaw cycles.
Host	Rabbit
Uniprot ID	P62736

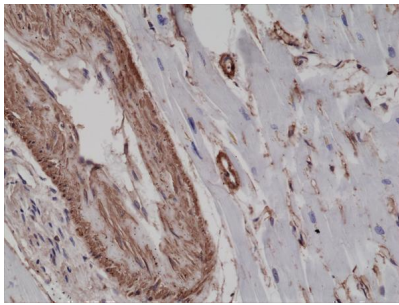
Technical Details

Immunogen	A synthetic peptide corresponding to the N-terminus of human alpha smooth muscle Actin
Predicted Reactive Species	Bovine, Rat
Cross Reactivity	This antibody reacts to human and mouse alpha smooth muscle Actin (alpha-Actin-2). This antibody may also react to bovine or rat alpha smooth muscle Actin, as predicted by immunogen homology
Isotype	Rabbit IgG
Form	Liquid
Concentration	0.5-1mg/ml, actual concentration vary by lot. Use suggested dilution ratio to decide dilution procedure.
Purification	Protein A affinity purified from an animal origin-free culture supernatant
Suggested Dilutions	Immunohistochemistry (IHC): 1:100-1:2500 dilution WB: 1:1000-1:2000 dilution.

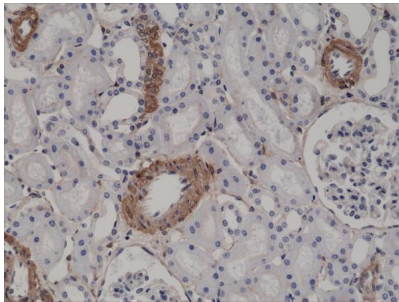
Anti-ACTA2 Rabbit Monoclonal Antibody, Clone#RM253 (M01072-4) Images



Western Blotting result Western Blot of mouse heart tissue lysate, using Anti-alpha smooth muscle Actin RM253 at a 1:1000 dilution.



IHC result Immunohistochemical staining of formalin fixed and paraffin embedded human heart tissue sections using Anti-alpha smooth muscle Actin RM253 at a 1:2500 dilution.



IHC result Immunohistochemical staining of formalin fixed and paraffin embedded human kidney tissue sections using Anti-alpha smooth muscle Actin RM253 at a 1:2500 dilution.

2 Publications Citing This Product

1. PubMed ID: 32463570, Xu T, Pan L, Li L, Hu S, Zhou H, Yang C, Yang J, Li H, Liu Y, Meng X, Li J. MicroRNA-708 modulates Hepatic Stellate Cells activation and enhances extracellular matrix accumulation via direct targeting TMEM88. *J Cell Mol Med.* 2020 Jul;24(13):7127-7140. doi: 10.1111/jc
2. PubMed ID: 33118280, Yang J, Li J, Tan R, He X, Lin X, Zhong X, Fan J, Wang L. Protocatechualdehyde attenuates obstructive nephropathy through inhibiting lncRNA9884 induced inflammation. *Phytother Res.* 2020 Oct 28. doi:10.1002/ptr.6 919. Epub ahead of print. PMID: 33118280.

Visit [bosterbio.com/anti-acta2-rabbit-monoclonal-antibody-clone-rm253-m01072-4-boster.html](https://www.bosterbio.com/anti-acta2-rabbit-monoclonal-antibody-clone-rm253-m01072-4-boster.html) to see all 2 publications.

Submit a product review to Biocompare.com

Submit a review of this product to Biocompare.com to receive a \$20 Amazon.com giftcard! Your reviews help your fellow scientists make the right decisions. Thank you for your contribution.



Anti-ACTA2 Rabbit Monoclonal Antibody, Clone#RM253

For Research Use Only. Not for use in diagnostic procedures.