

## Anti-SPI1 Rabbit Monoclonal Antibody

Catalog Number: M01116

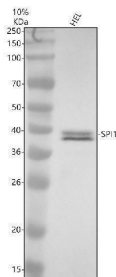
### Overview

Product Name	Anti-SPI1 Rabbit Monoclonal Antibody
Reactive Species	Human
Description	Boster Bio Anti-SPI1 Rabbit Monoclonal Antibody catalog # M01116. Tested in WB, IHC, Flow Cytometry applications. This antibody reacts with Human.
Application	Flow Cytometry, IHC, WB
Clonality	Monoclonal AEIG-19
Formulation	Rabbit IgG in stabilizing components, phosphate buffered saline, pH 7.4, 150mM NaCl, 0.02% sodium azide and 50% glycerol. *This antibody is supplied in a stabilized formulation. Compatibility with conjugation reactions depends on the chemistry of the conjugation method used. For conjugation methods that are not compatible with the stabilizing components present in this formulation, a carrier-free antibody format is required.
Storage Instructions	Store at -20°C for one year. For short term storage and frequent use, store at 4°C for up to one month. Avoid repeated freeze-thaw cycles.
Host	Rabbit
Uniprot ID	P17947

### Technical Details

Immunogen	A synthesized peptide derived from human PU.1/Spi1
Isotype	Rabbit IgG
Form	Liquid
Concentration	0.5mg/ml
Purification	Affinity-chromatography
Suggested Dilutions	WB 1:500-2000 IHC 1:50-200 FC 1:60

## Anti-SPI1 Rabbit Monoclonal Antibody (M01116) Images



Western blot analysis of SPI1 using anti-SPI1 antibody (M01116). Electrophoresis was performed on a 10% SDS-PAGE gel at 80V (Stacking gel) / 120V (Resolving gel) for 2 hours. The sample well of each lane was loaded with 30 ug of sample under reducing conditions. Lane 1: human HEL whole cell lysates. After electrophoresis, proteins were transferred to a nitrocellulose membrane at 150 mA for 50-90 minutes. Blocked the membrane with 5% non-fat milk/TBS for 1.5 hour at RT. The membrane was incubated with rabbit anti-SPI1 antigen affinity purified monoclonal antibody (M01116) at 1:500 overnight at 4°C, then washed with TBS-0.1% Tween 3 times with 5 minutes each and probed with a goat anti-rabbit IgG-HRP secondary antibody at a dilution of 1:5000 for 1.5 hour at RT. The signal is developed using an ECL Plus Western Blotting Substrate (Catalog # AR1196-200) with Tanon 5200 system. A specific band was detected for SPI1 at approximately 40 kDa. The expected band size for SPI1 is at 31 kDa.

### Submit a product review to Biocompare.com

Submit a review of this product to Biocompare.com to receive a \$20 Amazon.com giftcard! Your reviews help your fellow scientists make the right decisions. Thank you for your contribution.



Anti-SPI1 Rabbit Monoclonal Antibody

For Research Use Only. Not for use in diagnostic procedures.