

## Anti-SPI1 Antibody

Catalog Number: M01116-1

### About SPI1

Binds to the PU-box, a purine-rich DNA sequence (5'- GAGGAA-3') that can act as a lymphoid-specific enhancer. This protein is a transcriptional activator that may be specifically involved in the differentiation or activation of macrophages or B- cells. Also binds RNA and may modulate pre-mRNA splicing (By similarity).

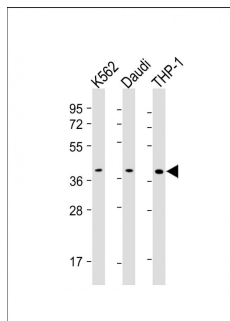
### Overview

Product Name	Anti-SPI1 Antibody
Reactive Species	Human
Description	Boster Bio Anti-SPI1 Antibody (Catalog # M01116-1). Tested in WB, IHC application(s). This antibody reacts with Human.
Application	WB
Clonality	Monoclonal 1835CT291.10.52
Formulation	Purified monoclonal antibody supplied in PBS with 0.09% (W/V) sodium azide.
Storage Instructions	Maintain refrigerated at 2-8°C for up to 2 weeks. For long-term storage, store at -20°C in small aliquots to prevent freeze-thaw cycles.
Host	Mouse
Uniprot ID	P17947

### Technical Details

Immunogen	This SPI1 antibody is generated from a mouse immunized with a recombinant protein of human SPI1.
Predicted Reactive Species	Horse
Isotype	IgG1,k
Purification	This antibody is purified through a protein G column, followed by dialysis against PBS.
Suggested Dilutions	WB: 1:500-1:1000

## Anti-SPI1 Antibody (M01116-1) Images



All lanes : Anti-SPI1 Antibody at 1:500-1:1000 dilution  
Lane 1: K562 whole cell lysate  
Lane 2: Daudi whole cell lysate  
Lane 3: THP-1 whole cell lysate  
Lysates/proteins at 20  $\mu$ g per lane.  
Secondary Goat Anti-mouse IgG, (H+L), Peroxidase conjugated at 1/10000 dilution. Predicted band size : 31 kDa  
Blocking/Dilution buffer: 5% NFDN/TBST.

## Submit a product review to Biocompare.com

Submit a review of this product to Biocompare.com to receive a \$20 Amazon.com giftcard! Your reviews help your fellow scientists make the right decisions. Thank you for your contribution.



### Anti-SPI1 Antibody

For Research Use Only. Not for use in diagnostic procedures.