

Anti-ALDH3A1 Mouse Monoclonal Antibody [Clone ID: OTI1B6]

Catalog Number: M01121

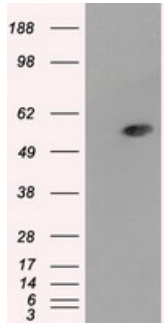
Overview

Product Name	Anti-ALDH3A1 Mouse Monoclonal Antibody [Clone ID: OTI1B6]
Reactive Species	Human
Description	Boster Bio Anti-ALDH3A1 mouse monoclonal antibody, clone OTI1B6 (formerly 1B6). Catalog# M01121. Tested in FC, IF, IHC, WB. This antibody reacts with Human.
Application	Flow Cytometry, IF, IHC, WB
Clonality	Monoclonal OTI1B6
Formulation	PBS (pH 7.3) containing 1% BSA, 50% glycerol and 0.02% sodium azide.
Storage Instructions	Store at -20°C as received.
Host	Mouse
Uniprot ID	P30838

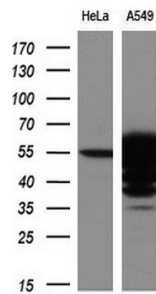
Technical Details

Immunogen	Full length human recombinant protein of human ALDH3A1 (NP_000682) produced in HEK293T cell.
Isotype	IgG2a
Concentration	0.93 mg/ml
Purification	Purified from mouse ascites fluids or tissue culture supernatant by affinity chromatography (protein A/G)
Suggested Dilutions	Dilute the sample so that the expected range of concentrations fall within the detection range of this kit. If the expected range of concentration is unknown, a pilot test should be conducted to decide the optimal dilution ratio for your samples. Some PubMed article(s) citing the expression level of this target are as follows:

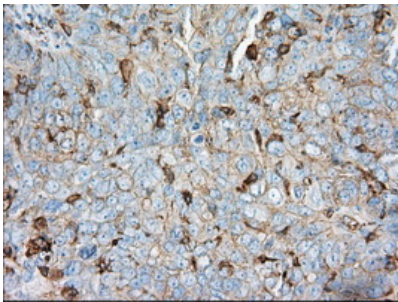
Anti-ALDH3A1 Mouse Monoclonal Antibody [Clone ID: OTI1B6] (M01121) Images



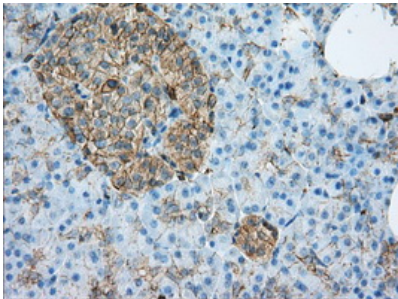
HEK293T cells were transfected with the pCMV6-ENTRY control (Left lane) or pCMV6-ENTRY ALDH3A1 (Right lane) cDNA for 48 hrs and lysed. Equivalent amounts of cell lysates (5 ug per lane) were separated by SDS-PAGE and immunoblotted with anti-ALDH3A1.



Western blot analysis of extracts (10ug) from 2 different cell lines by using anti-ALDH3A1 monoclonal antibody at 1:200 dilution.

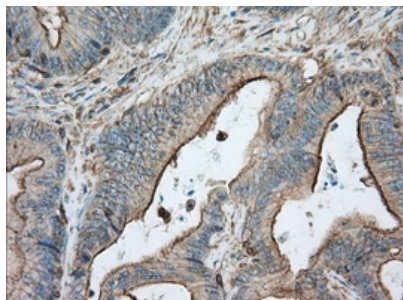
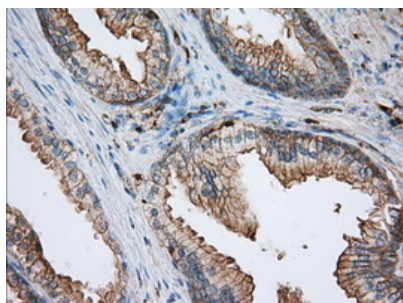


Immunohistochemical staining of paraffin-embedded Adenocarcinoma of ovary tissue using anti-ALDH3A1 mouse monoclonal antibody. (Heat-induced epitope retrieval by 10mM citric buffer)

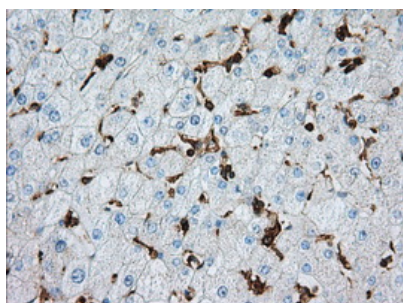


Immunohistochemical staining of paraffin-embedded pancreas tissue within the normal limits using anti-ALDH3A1 mouse monoclonal antibody. (Heat-induced epitope retrieval by 10mM citric buffer)

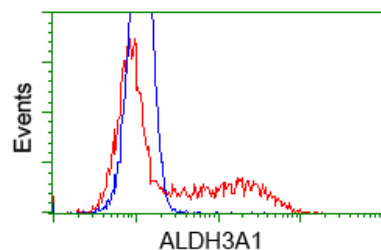
Immunohistochemical staining of paraffin-embedded prostate tissue within the normal limits using anti-ALDH3A1 mouse monoclonal antibody. (Heat-induced epitope retrieval by 10mM citric buffer)



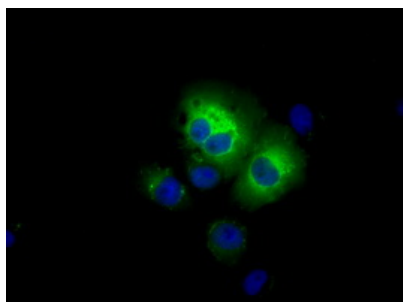
Immunohistochemical staining of paraffin-embedded Adenocarcinoma of colon tissue using anti-ALDH3A1 mouse monoclonal antibody. (Heat-induced epitope retrieval by 10mM citric buffer)



Immunohistochemical staining of paraffin-embedded liver tissue within the normal limits using anti-ALDH3A1 mouse monoclonal antibody. (Heat-induced epitope retrieval by 10mM citric buffer)



HEK293T cells transfected with either pCMV6-ENTRY ALDH3A1 (Red) or empty vector control plasmid (Blue) were immunostained with anti-ALDH3A1 mouse monoclonal (M01121)



Anti-ALDH3A1 mouse monoclonal antibody (M01121) immunofluorescent staining of COS7 cells transiently transfected by pCMV6-ENTRY ALDH3A1.

Submit a product review to Biocompare.com

Submit a review of this product to Biocompare.com to receive a \$20 Amazon.com giftcard! Your



reviews help your fellow scientists make the right decisions. Thank you for your contribution.

Anti-ALDH3A1 Mouse Monoclonal Antibody [Clone ID: OT11B6]