

## Anti-PDPN Mouse Monoclonal Antibody [Clone ID: OTI3H5]

Catalog Number: M01124-3

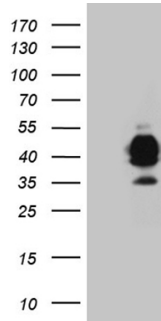
### Overview

Product Name	Anti-PDPN Mouse Monoclonal Antibody [Clone ID: OTI3H5]
Reactive Species	Human
Description	Boster Bio PDPN mouse monoclonal antibody, clone OTI3H5. Catalog# M01124-3. Tested in FC, IHC, WB. This antibody reacts with Human.
Application	Flow Cytometry, IHC, WB
Clonality	Monoclonal OTI3H5
Formulation	PBS (pH 7.3) containing 1% stabilizing protein, 50% glycerol and 0.02% sodium azide. This antibody is supplied in a stabilized formulation. Compatibility with conjugation reactions depends on the chemistry of the conjugation method used. For conjugation methods that are not compatible with the stabilizing components present in this formulation, a carrier-free antibody format is required.
Storage Instructions	Store at -20°C as received.
Host	Mouse
Uniprot ID	Q86YL7

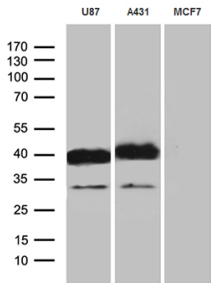
### Technical Details

Immunogen	Human recombinant protein fragment corresponding to amino acids 23-131 of human PDPN (NP_006465) produced in E.coli.
Isotype	IgG2a
Concentration	1 mg/ml
Purification	Purified from mouse ascites fluids or tissue culture supernatant by affinity chromatography (protein A/G)
Suggested Dilutions	WB 1:500

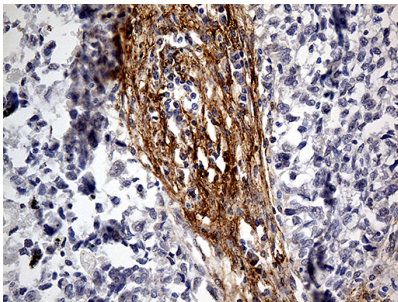
## Anti-PDPN Mouse Monoclonal Antibody [Clone ID: OTI3H5] (M01124-3) Images



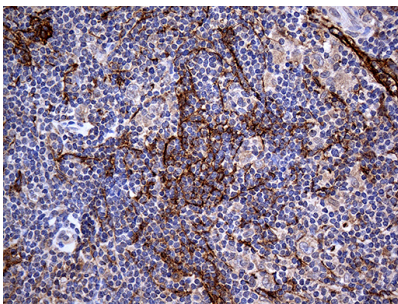
HEK293T cells were transfected with the pCMV6-ENTRY control (Left lane) or pCMV6-ENTRY PDPN (Right lane) cDNA for 48 hrs and lysed. Equivalent amounts of cell lysates (5 ug per lane) were separated by SDS-PAGE and immunoblotted with anti-PDPN (1:500).



Western blot analysis of extracts (35ug) from 3 different cell lines by using anti-PDPN monoclonal antibody (1:500).

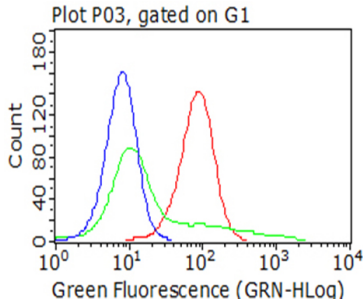
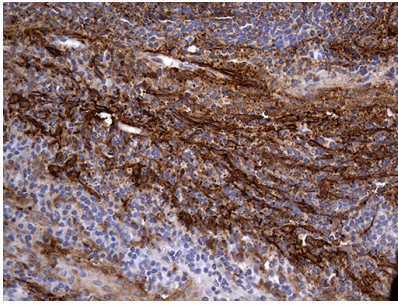


Immunohistochemical staining of paraffin-embedded Carcinoma of Human lung tissue using anti-PDPN mouse monoclonal antibody. (Heat-induced epitope retrieval by 1mM EDTA in 10mM Tris buffer (pH8.5) at 120°C for 3min)

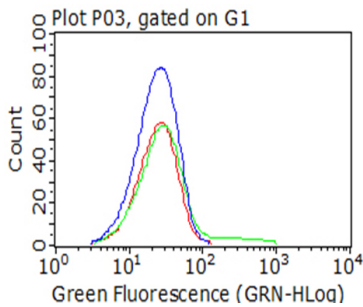


Immunohistochemical staining of paraffin-embedded Human lymphoma tissue using anti-PDPN mouse monoclonal antibody. (Heat-induced epitope retrieval by 1mM EDTA in 10mM Tris buffer (pH8.5) at 120°C for 3min)

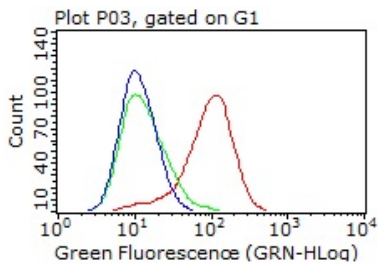
Immunohistochemical staining of paraffin-embedded Human tonsil within the normal limits using anti-PDPN mouse monoclonal antibody. (Heat-induced epitope retrieval by 1mM EDTA in 10mM Tris buffer (pH8.5) at 120°C for 3min)



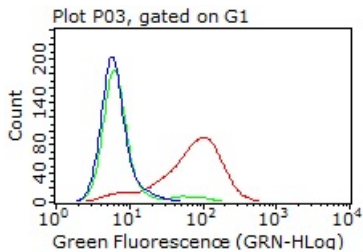
Flow cytometric analysis of living 293T cells



Flow cytometric analysis of living MCF7 cells



Flow cytometric analysis of living U87MG cells



Flow cytometric analysis of living A431 cells

**Submit a product review to Biocompare.com**

Submit a review of this product to Biocompare.com to receive a \$20 Amazon.com giftcard! Your reviews help your fellow scientists make the right decisions. Thank you for your contribution.



Anti-PDPN Mouse Monoclonal Antibody [Clone ID: OT13H5]

For Research Use Only. Not for use in diagnostic procedures.