

## Anti-PBRM1 Antibody (C-term)

Catalog Number: M01130-1

### About PBRM1

Involved in transcriptional activation and repression of select genes by chromatin remodeling (alteration of DNA-nucleosome topology). Acts as a negative regulator of cell proliferation.

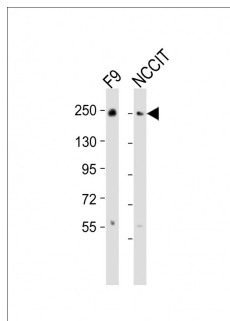
### Overview

Product Name	Anti-PBRM1 Antibody (C-term)
Reactive Species	Human, Mouse
Description	Boster Bio Anti-PBRM1 Antibody (C-term) (Catalog # M01130-1). Tested in WB application(s). This antibody reacts with Human, Mouse.
Application	WB
Clonality	Polyclonal
Formulation	Purified polyclonal antibody supplied in PBS with 0.09% (W/V) sodium azide.
Storage Instructions	Maintain refrigerated at 2-8°C for up to 2 weeks. For long-term storage, store at -20°C in small aliquots to prevent freeze-thaw cycles.
Host	Rabbit
Uniprot ID	Q86U86

### Technical Details

Immunogen	This PBRM1 antibody is generated from a rabbit immunized with a KLH conjugated synthetic peptide between 1121-1155 amino acids from the C-terminal region of human PBRM1.
Predicted Reactive Species	Bovine, Mouse
Isotype	Rabbit IgG
Purification	This antibody is purified through a protein A column, followed by peptide affinity purification.
Suggested Dilutions	WB: 1:2000

## Anti-PBRM1 Antibody (C-term) (M01130-1) Images



All lanes : Anti-PBRM1 Antibody (C-term) at 1:2000 dilution  
Lane 1: F9 whole cell lysates  
Lane 2: NCCIT whole cell lysates  
Lysates/proteins at 20 µg per lane. Secondary Goat Anti-Rabbit IgG, (H+L), Peroxidase conjugated at 1/10000 dilution  
Predicted band size : 193 kDa  
Blocking/Dilution buffer: 5% NFDM/TBST.

### Submit a product review to Biocompare.com

Submit a review of this product to Biocompare.com to receive a \$20 Amazon.com giftcard! Your reviews help your fellow scientists make the right decisions. Thank you for your contribution.



Anti-PBRM1 Antibody (C-term)

For Research Use Only. Not for use in diagnostic procedures.