

Anti-PKC epsilon (PRKCE) Mouse Monoclonal Antibody [Clone ID: OTI2A12]

Catalog Number: M01151-1

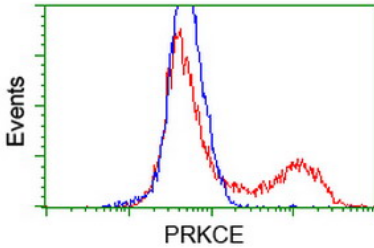
Overview

Product Name	Anti-PKC epsilon (PRKCE) Mouse Monoclonal Antibody [Clone ID: OTI2A12]
Reactive Species	Dog, Human, Monkey, Mouse, Rat
Description	Boster Bio PRKCE (PKC epsilon) mouse monoclonal antibody, clone OTI2A12 (formerly 2A12). Catalog# M01151-1. Tested in FC, IF, IHC, WB. This antibody reacts with Human, Monkey, Mouse, Rat, Dog.
Conjugate	Unconjugated
Application	Flow Cytometry, IF, IHC, WB
Clonality	Monoclonal OTI2A12
Formulation	PBS (pH 7.3) containing 1% stabilizing protein, 50% glycerol and 0.02% sodium azide. This antibody is supplied in a stabilized formulation. Compatibility with conjugation reactions depends on the chemistry of the conjugation method used. For conjugation methods that are not compatible with the stabilizing components present in this formulation, a carrier-free antibody format is required.
Storage Instructions	Store at -20°C for one year. For short term storage and frequent use, store at 4°C for up to one month. Avoid repeated freeze-thaw cycles.
Host	Mouse
Uniprot ID	Q02156

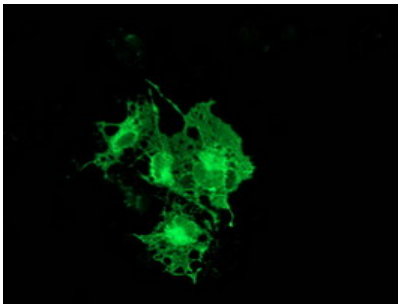
Technical Details

Immunogen	Full length human recombinant protein of human PRKCE (NP_005391) produced in HEK293T cell.
Isotype	IgG2b
Concentration	0.83 mg/ml
Purification	Purified from mouse ascites fluids or tissue culture supernatant by affinity chromatography (protein A/G)
Suggested Dilutions	WB 1:1000~2000 IHC 1:150 IF 1:100 Flow Cytometry 1:100

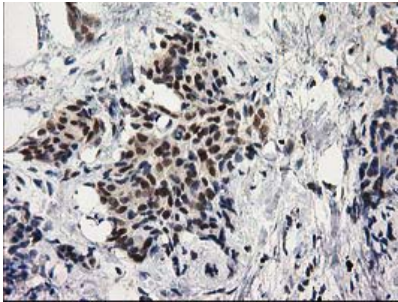
Anti-PRKCE epsilon (PRKCE) Mouse Monoclonal Antibody [Clone ID: OTI2A12] (M01151-1) Images



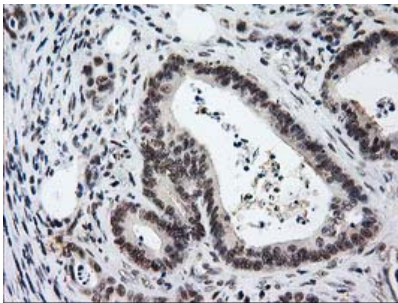
HEK293T cells transfected with either PRKCE (Myc-DDK-tagged) overexpress plasmid (Red) or empty vector control plasmid (Blue) were immunostained by anti-PRKCE antibody (M01151-1)



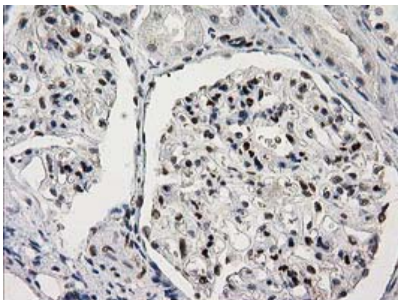
Anti-PRKCE mouse monoclonal antibody (M01151-1) immunofluorescent staining of COS7 cells transiently transfected by pCMV6-ENTRY PRKCE.



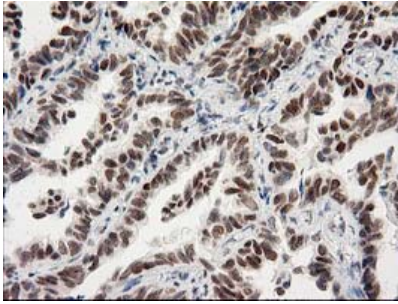
Immunohistochemical staining of paraffin-embedded Adenocarcinoma of Human breast tissue using anti-PRKCE mouse monoclonal antibody. (Heat-induced epitope retrieval by 10mM citric buffer)



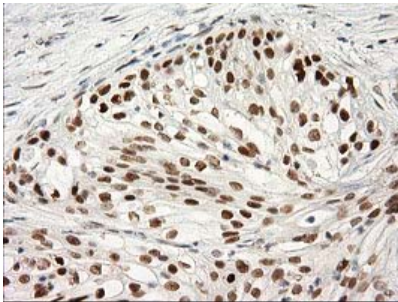
Immunohistochemical staining of paraffin-embedded Adenocarcinoma of Human colon tissue using anti-PRKCE mouse monoclonal antibody. (Heat-induced epitope retrieval by 10mM citric buffer)



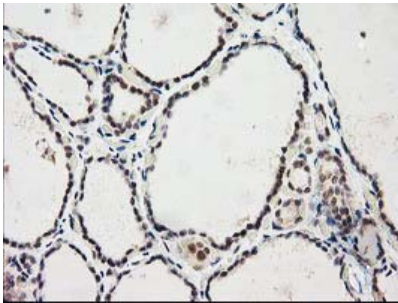
Immunohistochemical staining of paraffin-embedded Human Kidney tissue within the normal limits using anti-PRKCE mouse monoclonal antibody. (Heat-induced epitope retrieval by 10mM citric buffer)



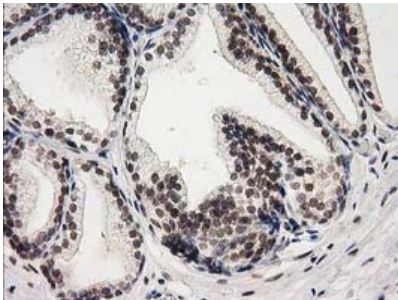
Immunohistochemical staining of paraffin-embedded Carcinoma of Human lung tissue using anti-PRKCE mouse monoclonal antibody. (Heat-induced epitope retrieval by 10mM citric buffer)



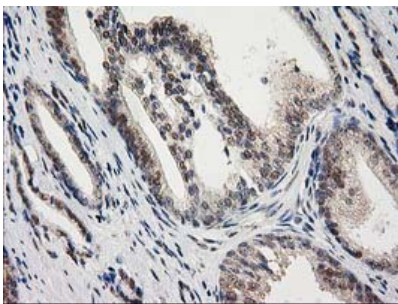
Immunohistochemical staining of paraffin-embedded Carcinoma of Human pancreas tissue using anti-PRKCE mouse monoclonal antibody. (Heat-induced epitope retrieval by 10mM citric buffer)



Immunohistochemical staining of paraffin-embedded Human thyroid tissue within the normal limits using anti-PRKCE mouse monoclonal antibody. (Heat-induced epitope retrieval by 10mM citric buffer)

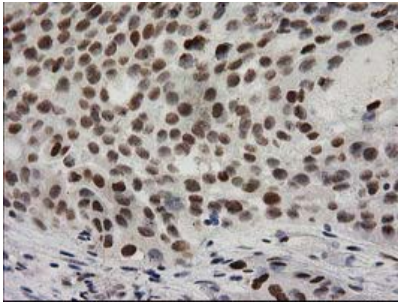


Immunohistochemical staining of paraffin-embedded Human prostate tissue within the normal limits using anti-PRKCE mouse monoclonal antibody. (Heat-induced epitope retrieval by 10mM citric buffer)

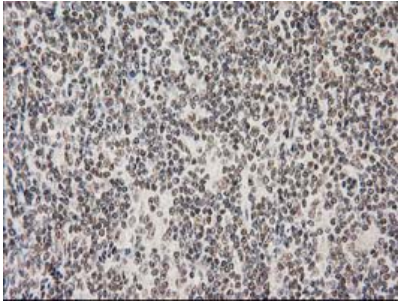


Immunohistochemical staining of paraffin-embedded Carcinoma of Human prostate tissue using anti-PRKCE mouse monoclonal antibody. (Heat-induced epitope retrieval by 10mM citric buffer)

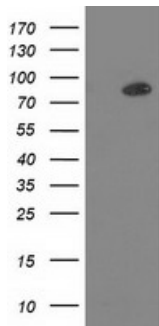
Immunohistochemical staining of paraffin-embedded Carcinoma of Human bladder tissue using anti-PRKCE mouse



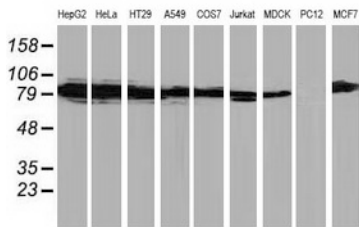
monoclonal antibody. (Heat-induced epitope retrieval by 10mM citric buffer)



Immunohistochemical staining of paraffin-embedded Human lymphoma tissue using anti-PRKCE mouse monoclonal antibody. (Heat-induced epitope retrieval by 10mM citric buffer)



HEK293T cells were transfected with the pCMV6-ENTRY control (Left lane) or pCMV6-ENTRY PRKCE (Right lane) cDNA for 48 hrs and lysed. Equivalent amounts of cell lysates (5 ug per lane) were separated by SDS-PAGE and immunoblotted with anti-PRKCE.



Western blot analysis of extracts (35ug) from 9 different cell lines by using anti-PRKCE monoclonal antibody (HepG2: human; HeLa: human; SVT2: mouse; A549: human; COS7: monkey; Jurkat: human; MDCK: canine; PC12: rat; MCF7: human).

Submit a product review to Biocompare.com

Submit a review of this product to Biocompare.com to receive a \$20 Amazon.com giftcard! Your reviews help your fellow scientists make the right decisions. Thank you for your contribution.



Anti-PKC epsilon (PRKCE) Mouse Monoclonal Antibody [Clone ID: OTI2A12]

For Research Use Only. Not for use in diagnostic procedures.