

Anti-PKM2 Rabbit Monoclonal Antibody

Catalog Number: M01173

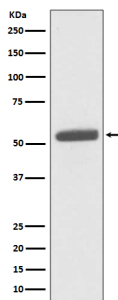
Overview

Product Name	Anti-PKM2 Rabbit Monoclonal Antibody
Reactive Species	Human, Mouse, Rat
Description	Boster Bio Anti-PKM2 Rabbit Monoclonal Antibody catalog # M01173. Tested in WB, IHC, ICC/IF, Flow Cytometry applications. This antibody reacts with Human, Mouse, Rat.
Application	Flow Cytometry, IF, IHC, ICC, WB
Clonality	Monoclonal GCB-16
Formulation	Rabbit IgG in stabilizing components, phosphate buffered saline, pH 7.4, 150mM NaCl, 0.02% sodium azide and 50% glycerol. *This antibody is supplied in a stabilized formulation. Compatibility with conjugation reactions depends on the chemistry of the conjugation method used. For conjugation methods that are not compatible with the stabilizing components present in this formulation, a carrier-free antibody format is required.
Storage Instructions	Store at -20°C for one year. For short term storage and frequent use, store at 4°C for up to one month. Avoid repeated freeze-thaw cycles.
Host	Rabbit
Uniprot ID	P14618

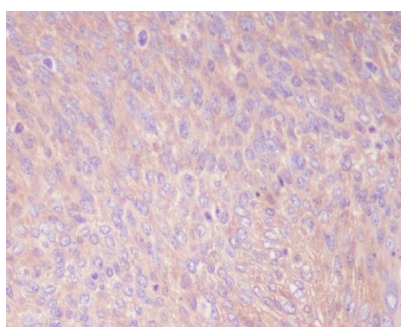
Technical Details

Immunogen	A synthesized peptide derived from human PKM2
Isotype	Rabbit IgG
Form	Liquid
Concentration	0.5mg/ml
Purification	Affinity-chromatography
Suggested Dilutions	WB 1:1000-1:2000 IHC 1:50-1:200 ICC/IF 1:50-1:200 FC 1:50

Anti-PKM2 Rabbit Monoclonal Antibody (M01173) Images



Western blot analysis of PKM2 expression in HeLa cell lysate.



Immunohistochemical analysis of paraffin-embedded human cervix cancer, using PKM2 Antibody.

1 Publications Citing This Product

1. PubMed ID: 32768579, Chen J,Wu D,Dong Z,Chen A,Liu S.The expression and role of glycolysis-associated molecules in infantile hemangioma.Life Sci.2020 Oct 15;259:118215.doi:10.1016/j.lfs.2020.118215.Epub 2020 Aug 5.PMID:32768579.

Visit bosterbio.com/anti-pkm2-rabbit-monoclonal-antibody-m01173-boster.html to see all 1 publications.

Submit a product review to Biocompare.com

Submit a review of this product to Biocompare.com to receive a \$20 Amazon.com giftcard! Your reviews help your fellow scientists make the right decisions. Thank you for your contribution.



Anti-PKM2 Rabbit Monoclonal Antibody

For Research Use Only. Not for use in diagnostic procedures.