

## Anti-Hu CD1c Purified Monoclonal Antibody

Catalog Number: M01188

### About CD1C

CD1c (also known as R7 or BDCA1) together with CD1a and b, belongs to group 1 of CD1 antigens. These non-classical MHC-like glycoproteins serve as antigen-presenting molecules for a subset of T cells that responds to specific lipids and glycolipids found in the cell walls of bacterial pathogens or self-glycolipid antigens such as gangliosides, and they have also roles in antiviral immunity. The trafficking routes of the particular CD1 types differ and correspond to their ability to bind and present different groups of antigens. CD1c is unique in its ability to present e.g. mycobacterial phosphoketides and polyisoprenoids. CD1c is the only CD1 isoform that has been shown to interact both with alpha/beta and gamma/delta T cells.

### Overview

Product Name	Anti-Hu CD1c Purified Monoclonal Antibody
Reactive Species	Human
Description	Boster Bio Anti-Hu CD1c Purified Monoclonal Antibody (Catalog# M01188). Tested in Flow Cytometry, IP, IHC application(s). This antibody reacts with Human.
Application	Flow Cytometry, IP, IHC
Clonality	Monoclonal L161
Formulation	Phosphate buffered saline (PBS), pH 7.4, 15 mM sodium azide
Storage Instructions	Store at 2-8°C. Do not freeze.
Host	Mouse
Uniprot ID	P29017

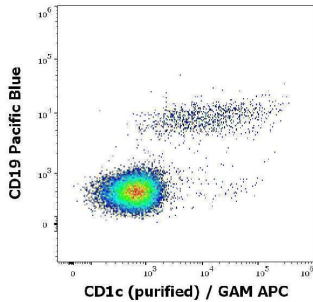
### Technical Details

Immunogen	Human thymocytes. The mouse monoclonal antibody L161 recognizes an extracellular epitope of CD1c, (R7), a 43 kDa type I glycoprotein associated with beta2-microglobulin. It is expressed on cortical thymocytes (strongly), Langerhans cells, dendritic cells, B and some T cells.
Predicted Reactive Species	Primate
Isotype	Mouse IgG1 kappa
Form	Liquid
Concentration	1 mg/ml
Purification	Purified by protein-A affinity chromatography.

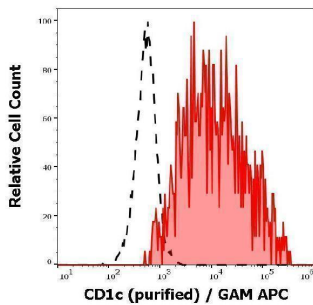
Suggested Dilutions

Flow cytometry: 1-4 ug/ml.

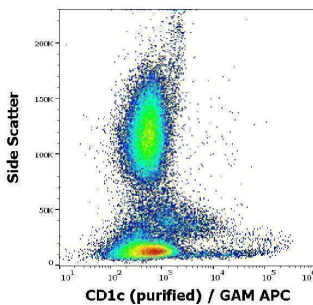
## Anti-Hu CD1c Purified Monoclonal Antibody (M01188) Images



Flow cytometry multicolor surface staining of human lymphocytes stained using anti-human CD1c (L161) purified antibody (concentration in sample 0,33 µg/ml, GAM APC) and anti-human CD19 (LT19) APC antibody (20 µl reagent / 100 µl of peripheral whole blood).



Separation of human CD1c positive CD19 positive lymphocytes (red-filled) from neutrophil granulocytes (black-dashed) in flow cytometry analysis (surface staining) of human peripheral whole blood using anti-human CD1c (L161) purified antibody (concentration in sample 0,33 µg/ml, GAM APC).



Flow cytometry surface staining pattern of human peripheral whole blood stained using anti-human CD1c (L161) purified antibody (concentration in sample 0,33 µg/ml, GAM APC).

### Submit a product review to [Biocompare.com](https://www.biocompare.com)

Submit a review of this product to [Biocompare.com](https://www.biocompare.com) to receive a \$20 Amazon.com giftcard! Your reviews help your fellow scientists make the right decisions. Thank you for your contribution.



Anti-Hu CD1c Purified Monoclonal Antibody

For Research Use Only. Not for use in diagnostic procedures.