

Anti-CD1C Mouse Monoclonal Antibody [Clone ID: OTI2F4]

Catalog Number: M01188-1

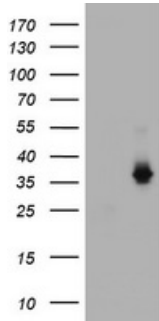
Overview

Product Name	Anti-CD1C Mouse Monoclonal Antibody [Clone ID: OTI2F4]
Reactive Species	Human
Description	Boster Bio CD1C mouse monoclonal antibody, clone OTI2F4 (formerly 2F4). Catalog# M01188-1. Tested in IF, IHC, WB. This antibody reacts with Human.
Application	IF, IHC, WB
Clonality	Monoclonal OTI2F4
Formulation	PBS (pH 7.3) containing 1% stabilizing protein, 50% glycerol and 0.02% sodium azide. This antibody is supplied in a stabilized formulation. Compatibility with conjugation reactions depends on the chemistry of the conjugation method used. For conjugation methods that are not compatible with the stabilizing components present in this formulation, a carrier-free antibody format is required.
Storage Instructions	Store at -20°C as received.
Host	Mouse
Uniprot ID	P29017

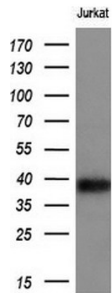
Technical Details

Immunogen	Full length human recombinant protein of human CD1C (NP_001756) produced in HEK293T cell.
Isotype	IgG1
Concentration	1 mg/ml
Purification	Purified from mouse ascites fluids or tissue culture supernatant by affinity chromatography (protein A/G)
Suggested Dilutions	WB 1:200 - 1:1000 IHC 1:150

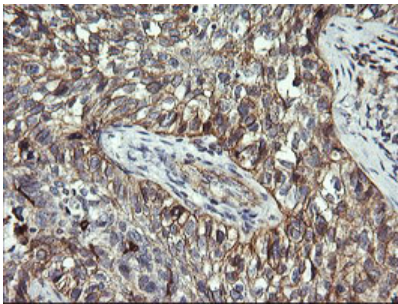
Anti-CD1C Mouse Monoclonal Antibody [Clone ID: OTI2F4] (M01188-1) Images



HEK293T cells were transfected with the pCMV6-ENTRY control (Left lane) or pCMV6-ENTRY CD1C (Right lane) cDNA for 48 hrs and lysed. Equivalent amounts of cell lysates (5 ug per lane) were separated by SDS-PAGE and immunoblotted with anti-CD1C.



Western blot analysis of extracts (10ug) from 1 cell lines by using anti-CD1C monoclonal antibody (1:200).

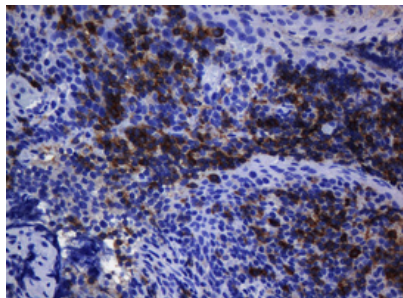
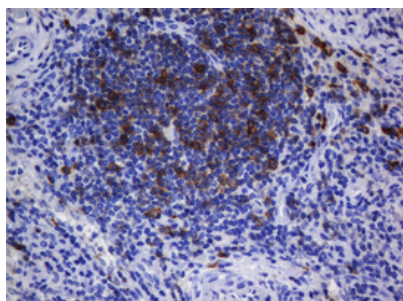


Immunohistochemical staining of paraffin-embedded Carcinoma of Human lung tissue using anti-CD1C mouse monoclonal antibody. (M01188-1)

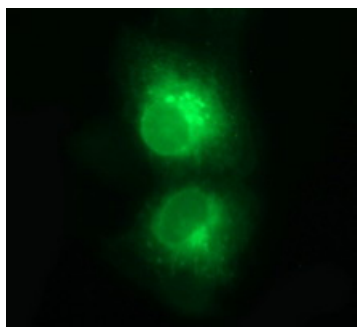


Immunohistochemical staining of paraffin-embedded Human endometrium tissue within the normal limits using anti-CD1C mouse monoclonal antibody. (M01188-1)

Immunohistochemical staining of paraffin-embedded Human lymph node tissue within the normal limits using anti-CD1C mouse monoclonal antibody. (Heat-induced epitope retrieval by 10mM citric buffer)



Immunohistochemical staining of paraffin-embedded Human tonsil within the normal limits using anti-CD1C mouse monoclonal antibody. (Heat-induced epitope retrieval by 10mM citric buffer)



Anti-CD1C mouse monoclonal antibody (M01188-1) immunofluorescent staining of COS7 cells transiently transfected by pCMV6-ENTRY CD1C.



Immunofluorescent staining of HeLa cells using anti-CD1C mouse monoclonal antibody (M01188-1).

Submit a product review to [Biocompare.com](https://www.biocompare.com)

Submit a review of this product to [Biocompare.com](https://www.biocompare.com) to receive a \$20 Amazon.com giftcard! Your reviews help your fellow scientists make the right decisions. Thank you for your contribution.



Anti-CD1C Mouse Monoclonal Antibody [Clone ID: OTI2F4]

For Research Use Only. Not for use in diagnostic procedures.