

Anti-CD1C Mouse Monoclonal Antibody [Clone ID: OTI1E10]

Catalog Number: M01188-2

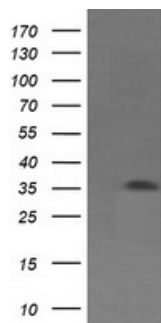
Overview

Product Name	Anti-CD1C Mouse Monoclonal Antibody [Clone ID: OTI1E10]
Reactive Species	Dog, Human, Monkey, Mouse, Rat
Description	Boster Bio CD1C mouse monoclonal antibody, clone OTI1E10 (formerly 1E10). Catalog# M01188-2. Tested in WB. This antibody reacts with Human, Monkey, Mouse, Rat, Dog.
Application	WB
Clonality	Monoclonal OTI1E10
Formulation	PBS (PH 7.3) containing 1% BSA, 50% glycerol and 0.02% sodium azide.
Storage Instructions	Store at -20°C as received.
Host	Mouse
Uniprot ID	P29017

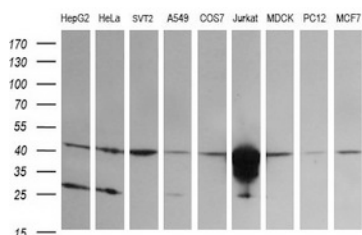
Technical Details

Immunogen	Full length human recombinant protein of human CD1C (NP_001756) produced in HEK293T cell.
Isotype	IgG1
Concentration	1 mg/ml
Purification	Purified from mouse ascites fluids or tissue culture supernatant by affinity chromatography (protein A/G)
Suggested Dilutions	Dilute the sample so that the expected range of concentrations fall within the detection range of this kit. If the expected range of concentration is unknown, a pilot test should be conducted to decide the optimal dilution ratio for your samples. Some PubMed article(s) citing the expression level of this target are as follows:

Anti-CD1C Mouse Monoclonal Antibody [Clone ID: OTI1E10] (M01188-2) Images



HEK293T cells were transfected with the pCMV6-ENTRY control (Left lane) or pCMV6-ENTRY CD1C (Right lane) cDNA for 48 hrs and lysed. Equivalent amounts of cell lysates (5 ug per lane) were separated by SDS-PAGE and immunoblotted with anti-CD1C.



Western blot analysis of extracts (35ug) from 9 different cell lines by using anti-CD1C monoclonal antibody (HepG2: human; HeLa: human; SVT2: mouse; A549: human; COS7: monkey; Jurkat: human; MDCK: canine; PC12: rat; MCF7: human).

Submit a product review to Biocompare.com

Submit a review of this product to Biocompare.com to receive a \$20 Amazon.com giftcard! Your reviews help your fellow scientists make the right decisions. Thank you for your contribution.



Anti-CD1C Mouse Monoclonal Antibody [Clone ID: OTI1E10]