

Anti-CD36 Mouse Monoclonal Antibody [Clone ID: OTI3F4]

Catalog Number: M01189-1

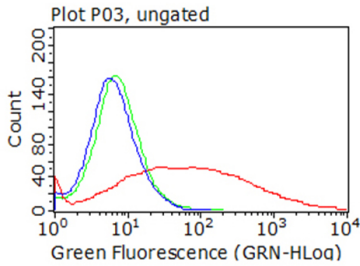
Overview

| | |
|----------------------|--|
| Product Name | Anti-CD36 Mouse Monoclonal Antibody [Clone ID: OTI3F4] |
| Reactive Species | Human, Rat |
| Description | Boster Bio Anti-CD36 mouse monoclonal antibody, clone OTI3F4 (formerly 3F4). Catalog# M01189-1. Tested in FC, IF, IHC, WB. This antibody reacts with Human, Rat. |
| Conjugate | Unconjugated |
| Application | Flow Cytometry, IF, IHC, WB |
| Clonality | Monoclonal OTI3F4 |
| Formulation | PBS (pH 7.3) containing 1% stabilizing protein, 50% glycerol and 0.02% sodium azide. This antibody is supplied in a stabilized formulation. Compatibility with conjugation reactions depends on the chemistry of the conjugation method used. For conjugation methods that are not compatible with the stabilizing components present in this formulation, a carrier-free antibody format is required. |
| Storage Instructions | Store at -20°C for one year. For short term storage and frequent use, store at 4°C for up to one month. Avoid repeated freeze-thaw cycles. |
| Host | Mouse |
| Uniprot ID | P16671 |

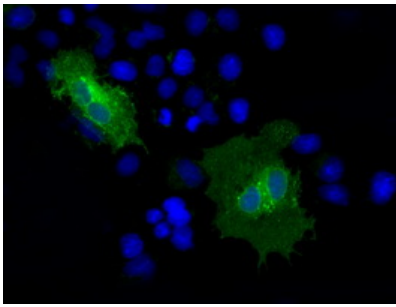
Technical Details

| | |
|---------------------|---|
| Immunogen | Full length human recombinant protein of human CD36 (NP_000063) produced in HEK293T cell. |
| Isotype | IgG1 |
| Concentration | 1 mg/ml |
| Purification | Purified from mouse ascites fluids or tissue culture supernatant by affinity chromatography (protein A/G) |
| Suggested Dilutions | WB: 1:2000 IHC: 1:50 IF: 1:100 Flow Cytometry: 1:100 |

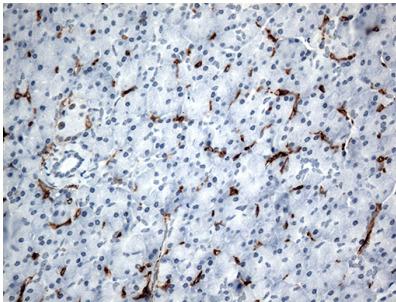
Anti-CD36 Mouse Monoclonal Antibody [Clone ID: OTI3F4] (M01189-1) Images



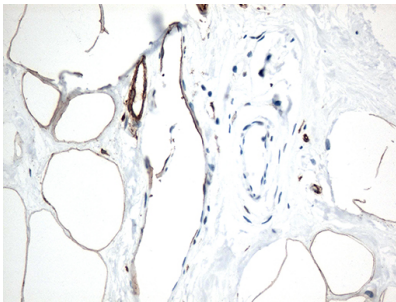
HEK293T cells transfected with either CD36 (Myc-DDK-tagged) overexpress plasmid (Red)



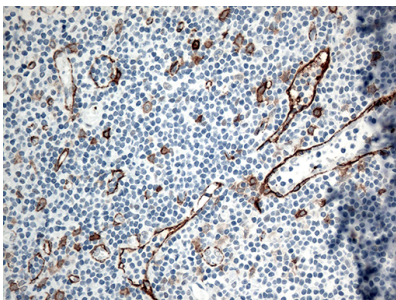
Anti-CD36 mouse monoclonal antibody (M01189-1) immunofluorescent staining of COS7 cells transiently transfected by pCMV6-ENTRY CD36.



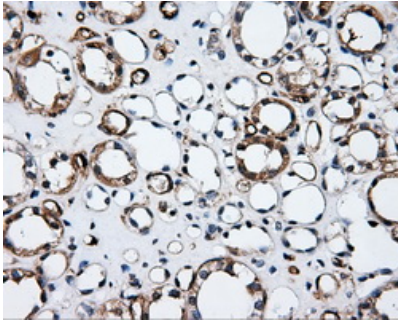
Immunohistochemical staining of paraffin-embedded Human pancreas tissue within the normal limits using anti-CD36 mouse monoclonal antibody. (Heat-induced epitope retrieval by 1mM EDTA in 10mM Tris buffer (pH8.5) at 120°C for 3min)



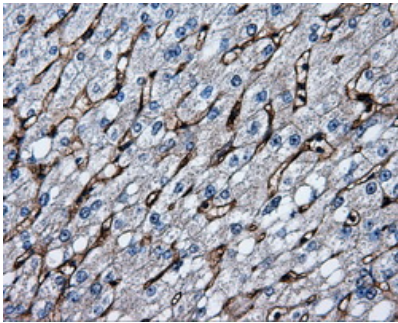
Immunohistochemical staining of paraffin-embedded Human breast tissue within the normal limits using anti-CD36 mouse monoclonal antibody. (Heat-induced epitope retrieval by 1mM EDTA in 10mM Tris buffer (pH8.5) at 120°C for 3min)



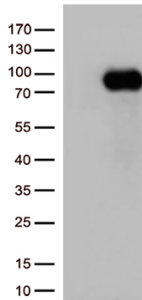
Immunohistochemical staining of paraffin-embedded Human tonsil within the normal limits using anti-CD36 mouse monoclonal antibody. (Heat-induced epitope retrieval by 1mM EDTA in 10mM Tris buffer (pH8.5) at 120°C for 3min)



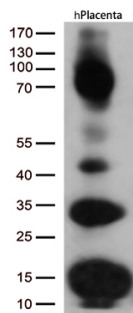
Immunohistochemical staining of paraffin-embedded Kidney tissue within the normal limits using anti-CD36 mouse monoclonal antibody. (Heat-induced epitope retrieval by 10mM citric buffer)



Immunohistochemical staining of paraffin-embedded liver tissue within the normal limits using anti-CD36 mouse monoclonal antibody. (Heat-induced epitope retrieval by 10mM citric buffer)



HEK293T cells were transfected with the pCMV6-ENTRY control (Left lane) or pCMV6-ENTRY CD36 (Right lane) cDNA for 48 hrs and lysed. Equivalent amounts of cell lysates (5 ug per lane) were separated by SDS-PAGE and immunoblotted with anti-CD36 (1:500).



Western blot analysis of extracts (35ug) from human placenta tissue by using anti-CD36 monoclonal antibody (1:500).

Submit a product review to [Biocompare.com](https://www.biocompare.com)

Submit a review of this product to [Biocompare.com](https://www.biocompare.com) to receive a \$20 Amazon.com giftcard! Your reviews help your fellow scientists make the right decisions. Thank you for your contribution.



Anti-CD36 Mouse Monoclonal Antibody [Clone ID: OTI3F4]

For Research Use Only. Not for use in diagnostic procedures.