

## Anti-FHIT Rabbit Monoclonal Antibody

Catalog Number: M01200-3

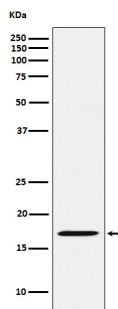
### Overview

|                      |  |
|----------------------|--|
| Product Name         | Anti-FHIT Rabbit Monoclonal Antibody   |
| Reactive Species     | Human, Rat   |
| Description          | Boster Bio Anti-FHIT Rabbit Monoclonal Antibody catalog # M01200-3. Tested in WB application. This antibody reacts with Human, Rat.  |
| Application          | WB   |
| Clonality            | Monoclonal 24F24   |
| Formulation          | Rabbit IgG in stabilizing components, phosphate buffered saline, pH 7.4, 150mM NaCl, 0.02% sodium azide and 50% glycerol.<br>*This antibody is supplied in a stabilized formulation.<br>Compatibility with conjugation reactions depends on the chemistry of the conjugation method used. For conjugation methods that are not compatible with the stabilizing components present in this formulation, a carrier-free antibody format is required. |
| Storage Instructions | Store at -20°C for one year. For short term storage and frequent use, store at 4°C for up to one month. Avoid repeated freeze-thaw cycles.   |
| Host                 | Rabbit   |
| Uniprot ID           | P49789   |

### Technical Details

|                     |   |
|---------------------|---|
| Immunogen           | A synthesized peptide derived from human FHIT |
| Isotype             | IgG   |
| Form                | Liquid  |
| Concentration       | 0.5mg/ml                                      |
| Purification        | Affinity-chromatography                       |
| Suggested Dilutions | WB 1:500-2000                                 |

## Anti-FHIT Rabbit Monoclonal Antibody (M01200-3) Images



Western blot analysis of FHIT expression in Rat kidney lysate.

### Submit a product review to Biocompare.com

Submit a review of this product to Biocompare.com to receive a \$20 Amazon.com giftcard! Your reviews help your fellow scientists make the right decisions. Thank you for your contribution.



Anti-FHIT Rabbit Monoclonal Antibody

For Research Use Only. Not for use in diagnostic procedures.