

Anti-S100A4 Rabbit Monoclonal Antibody

Catalog Number: M01217-1

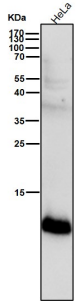
Overview

Product Name	Anti-S100A4 Rabbit Monoclonal Antibody
Reactive Species	Human, Mouse, Rat
Description	Boster Bio Anti-S100A4 Rabbit Monoclonal Antibody catalog # M01217-1. Tested in WB, IHC, ICC/IF, IP, Flow Cytometry applications. This antibody reacts with Human, Mouse, Rat.
Application	Flow Cytometry, IP, IF, IHC, ICC, WB
Clonality	Monoclonal GFG-19
Formulation	Rabbit IgG in stabilizing components, phosphate buffered saline, pH 7.4, 150mM NaCl, 0.02% sodium azide and 50% glycerol. *This antibody is supplied in a stabilized formulation. Compatibility with conjugation reactions depends on the chemistry of the conjugation method used. For conjugation methods that are not compatible with the stabilizing components present in this formulation, a carrier-free antibody format is required.
Storage Instructions	Store at -20°C for one year. For short term storage and frequent use, store at 4°C for up to one month. Avoid repeated freeze-thaw cycles.
Host	Rabbit
Uniprot ID	P26447

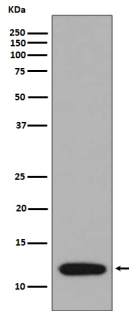
Technical Details

Immunogen	A synthesized peptide derived from human S100A4
Isotype	Rabbit IgG
Form	Liquid
Concentration	0.5mg/ml
Purification	Affinity-chromatography
Suggested Dilutions	WB 1:500-2000 IHC 1:50-200 ICC/IF 1:50-200 IP 1:40 FC 1:100

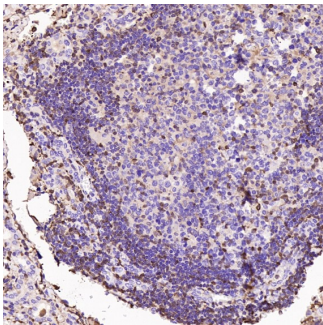
Anti-S100A4 Rabbit Monoclonal Antibody (M01217-1) Images



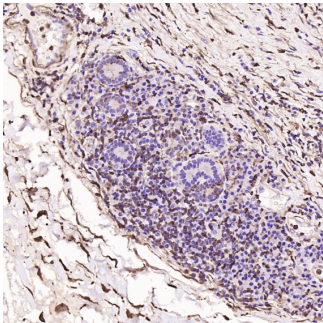
All lanes use the Antibody at 1:2K dilution for 1 hour at room temperature.



Western blot analysis of S100A4 expression in A375 cell lysate.

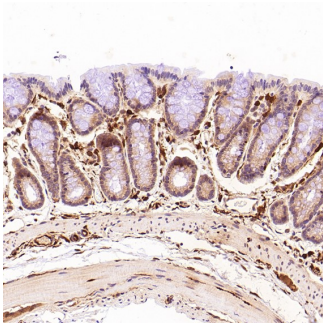


Immunohistochemical analysis of paraffin-embedded Human thyroid cancer, using the Antibody at 1:500 dilution.

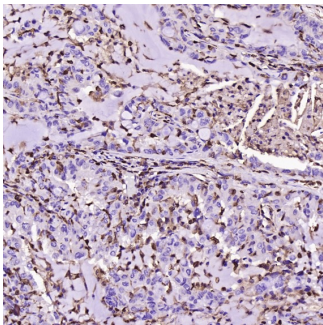


Immunohistochemical analysis of paraffin-embedded Human esophageal carcinoma, using the Antibody at 1:500 dilution.

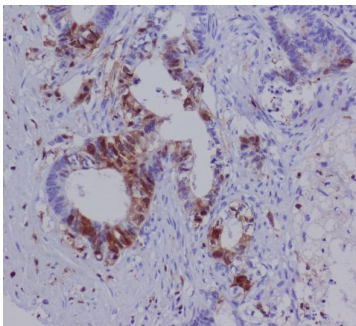
Immunohistochemical analysis of paraffin-embedded Rat stomach, using the Antibody at 1:1000 dilution.



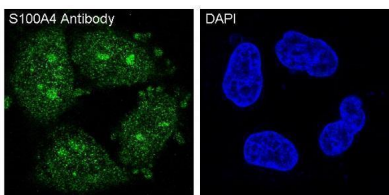
Immunohistochemical analysis of paraffin-embedded Human lung adenocarcinoma, using the Antibody at 1:500 dilution.



Immunohistochemical analysis of paraffin-embedded human colon carcinoma, using S100A4 Antibody.



Immunofluorescent analysis of HeLa cells, using S100A4 Antibody.



Submit a product review to [Biocompare.com](https://www.biocompare.com)

Submit a review of this product to [Biocompare.com](https://www.biocompare.com) to receive a \$20 Amazon.com giftcard! Your reviews help your fellow scientists make the right decisions. Thank you for your contribution.



Anti-S100A4 Rabbit Monoclonal Antibody

For Research Use Only. Not for use in diagnostic procedures.