

Anti-TGFBI/Beta Ig H3 Rabbit Monoclonal Antibody

Catalog Number: M01218-2

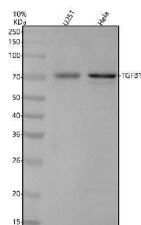
Overview

| | |
|----------------------|--|
| Product Name | Anti-TGFBI/Beta Ig H3 Rabbit Monoclonal Antibody |
| Reactive Species | Human, Mouse, Rat |
| Description | Boster Bio Anti-TGFBI/Beta Ig H3 Rabbit Monoclonal Antibody catalog # M01218-2. Tested in WB, IHC, ICC/IF applications. This antibody reacts with Human, Mouse, Rat. |
| Application | IF, IHC, ICC, WB |
| Clonality | Monoclonal DI-20 |
| Formulation | Rabbit IgG in stabilizing components, phosphate buffered saline, pH 7.4, 150mM NaCl, 0.02% sodium azide and 50% glycerol. *This antibody is supplied in a stabilized formulation. Compatibility with conjugation reactions depends on the chemistry of the conjugation method used. For conjugation methods that are not compatible with the stabilizing components present in this formulation, a carrier-free antibody format is required. |
| Storage Instructions | Store at -20°C for one year. For short term storage and frequent use, store at 4°C for up to one month. Avoid repeated freeze-thaw cycles. |
| Host | Rabbit |
| Uniprot ID | Q15582 |

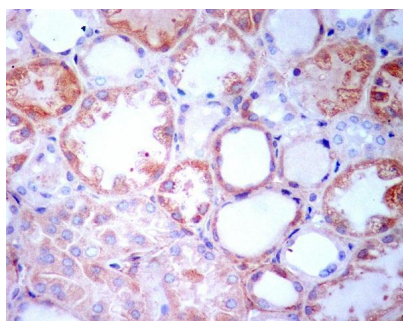
Technical Details

| | |
|---------------------|--|
| Immunogen | A synthesized peptide derived from human TGFBI |
| Isotype | Rabbit IgG |
| Form | Liquid |
| Concentration | 0.5mg/ml |
| Purification | Affinity-chromatography |
| Suggested Dilutions | WB 1:500-2000 IHC 1:50-200 ICC/IF 1:50-200 |

Anti-TGFB1/Beta Ig H3 Rabbit Monoclonal Antibody (M01218-2) Images



Western blot analysis of TGFB1 using anti-TGFB1 antibody (M01218-2). Electrophoresis was performed on a 10% SDS-PAGE gel at 80V (Stacking gel) / 120V (Resolving gel) for 2 hours. The sample well of each lane was loaded with 30 ug of sample under reducing conditions. Lane 1: human U251 whole cell lysates, Lane 2: human Hela whole cell lysates. After electrophoresis, proteins were transferred to a nitrocellulose membrane at 150 mA for 50-90 minutes. Blocked the membrane with 5% non-fat milk/TBS for 1.5 hour at RT. The membrane was incubated with rabbit anti-TGFB1 antigen affinity purified monoclonal antibody (M01218-2) at 1:500 overnight at 4°C, then washed with TBS-0.1% Tween 3 times with 5 minutes each and probed with a goat anti-rabbit IgG-HRP secondary antibody at a dilution of 1:5000 for 1.5 hour at RT. The signal is developed using an ECL Plus Western Blotting Substrate (Catalog # AR1196-200) with Tanon 5200 system. A specific band was detected for TGFB1 at approximately 68 kDa. The expected band size for TGFB1 is at 75 kDa.



Immunohistochemical analysis of paraffin-embedded human kidney, using TGFB1 Antibody.

1 Publications Citing This Product

1. PubMed ID: 32319604, Jia X, Wang H, Li Z, Yan J, Guo Y, Zhao W, Gao L, Wang B, Jia Y. HER4 promotes the progression of colorectal cancer by promoting epithelial-mesenchymal transition. Mol Med Rep. 2020 Apr; 21(4):1779-1788. doi:10.3892/mmr.2020.10974. Epub 2020 Feb 4. PMID: 32319604; PMCID

Visit bosterbio.com/anti-tgfb1-rabbit-monoclonal-antibody-m01218-2-boster.html to see all 1 publications.

Submit a product review to Biocompare.com

Submit a review of this product to Biocompare.com to receive a \$20 Amazon.com giftcard! Your reviews help your fellow scientists make the right decisions. Thank you for your contribution.



Anti-TGFB1/Beta Ig H3 Rabbit Monoclonal Antibody

For Research Use Only. Not for use in diagnostic procedures.