

Anti-Lamin B Receptor LBR Rabbit Monoclonal Antibody

Catalog Number: M01238

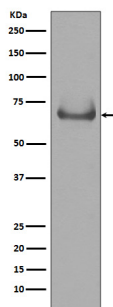
Overview

Product Name	Anti-Lamin B Receptor LBR Rabbit Monoclonal Antibody
Reactive Species	Human, Rat
Description	Boster Bio Anti-Lamin B Receptor LBR Rabbit Monoclonal Antibody catalog # M01238. Tested in WB, IHC, ICC/IF, IP applications. This antibody reacts with Human, Rat.
Application	IP, IF, IHC, ICC, WB
Clonality	Monoclonal EDO-12
Formulation	Rabbit IgG in stabilizing components, phosphate buffered saline, pH 7.4, 150mM NaCl, 0.02% sodium azide and 50% glycerol. *This antibody is supplied in a stabilized formulation. Compatibility with conjugation reactions depends on the chemistry of the conjugation method used. For conjugation methods that are not compatible with the stabilizing components present in this formulation, a carrier-free antibody format is required.
Storage Instructions	Store at -20°C for one year. For short term storage and frequent use, store at 4°C for up to one month. Avoid repeated freeze-thaw cycles.
Host	Rabbit
Uniprot ID	Q14739

Technical Details

Immunogen	A synthesized peptide derived from human Lamin B Receptor
Isotype	Rabbit IgG
Form	Liquid
Concentration	0.5mg/ml
Purification	Affinity-chromatography
Suggested Dilutions	WB 1:500-2000 IHC 1:50-200 ICC/IF 1:50-200 IP 1:30

Anti-Lamin B Receptor LBR Rabbit Monoclonal Antibody (M01238) Images



Western blot analysis of Lamin B Receptor expression in Jurkat cell lysate.

1 Publications Citing This Product

1. PubMed ID: 33316740, Tan J, Luo J, Meng C, Jiang N, Cao J, Zhao J. Syringin exerts neuroprotective effects in a rat model of cerebral ischemia through the FOXO3a/NF-kappaB pathway. *Int Immunopharmacol.* 2020 Dec 11;90:107268. doi:10.1016/j.intimp.2020.107268. Epub ahead of print. PMID:333

Visit bosterbio.com/anti-lamin-b-receptor-rabbit-monoclonal-antibody-m01238-boster.html to see all 1 publications.

Submit a product review to Biocompare.com

Submit a review of this product to Biocompare.com to receive a \$20 Amazon.com giftcard! Your reviews help your fellow scientists make the right decisions. Thank you for your contribution.



Anti-Lamin B Receptor LBR Rabbit Monoclonal Antibody

For Research Use Only. Not for use in diagnostic procedures.