

## Anti-Occludin OCLN Rabbit Monoclonal Antibody

Catalog Number: M01246

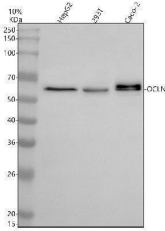
### Overview

Product Name	Anti-Occludin OCLN Rabbit Monoclonal Antibody
Reactive Species	Human, Mouse, Rat
Description	Boster Bio Anti-Occludin OCLN Rabbit Monoclonal Antibody catalog # M01246. Tested in WB, IP, Flow Cytometry applications. This antibody reacts with Human, Mouse, Rat.
Application	Flow Cytometry, IP, WB
Clonality	Monoclonal IEH-15
Formulation	Rabbit IgG in stabilizing components, phosphate buffered saline, pH 7.4, 150mM NaCl, 0.02% sodium azide and 50% glycerol. *This antibody is supplied in a stabilized formulation. Compatibility with conjugation reactions depends on the chemistry of the conjugation method used. For conjugation methods that are not compatible with the stabilizing components present in this formulation, a carrier-free antibody format is required.
Storage Instructions	Store at -20°C for one year. For short term storage and frequent use, store at 4°C for up to one month. Avoid repeated freeze-thaw cycles.
Host	Rabbit
Uniprot ID	Q16625

### Technical Details

Immunogen	A synthesized peptide derived from human Occludin
Isotype	Rabbit IgG
Form	Liquid
Concentration	0.5mg/ml
Purification	Affinity-chromatography
Suggested Dilutions	WB 1:1000-5000 IP 1:20 FC 1:20

## Anti-Occludin OCLN Rabbit Monoclonal Antibody (M01246) Images



Western blot analysis of OCLN using anti-OCLN antibody (M01246). Electrophoresis was performed on a 10% SDS-PAGE gel at 80V (Stacking gel) / 120V (Resolving gel) for 2 hours. The sample well of each lane was loaded with 30 ug of sample under reducing conditions. Lane 1: human HepG2 whole cell lysates, Lane 2: human 293T whole cell lysates, Lane 3: human Caco-2 whole cell lysates. After electrophoresis, proteins were transferred to a nitrocellulose membrane at 150 mA for 50-90 minutes. Blocked the membrane with 5% non-fat milk/TBS for 1.5 hour at RT. The membrane was incubated with rabbit anti-OCLN antigen affinity purified monoclonal antibody (M01246) at 1:5000 overnight at 4°C, then washed with TBS-0.1%Tween 3 times with 5 minutes each and probed with a goat anti-rabbit IgG-HRP secondary antibody at a dilution of 1:5000 for 1.5 hour at RT. The signal is developed using an ECL Plus Western Blotting Substrate (Catalog # AR1196-200) with Tanon 5200 system. A specific band was detected for OCLN at approximately 59 kDa. The expected band size for OCLN is at 59 kDa.

## 4 Publications Citing This Product

1. PubMed ID: -, Xiaozhu Tian, Rong Li, Yiming Jiang, Fei Zhao, Zhengsheng Yu, Yiqing Wang, Zixing Dong, Pu Liu, Xiangkai Li, Bifidobacterium breve ATCC15700 pretreatment prevents alcoholic liver disease through modulating gut microbiota in mice exposed to chronic alcohol intake, J
2. PubMed ID: -, Xin-li Liang, Miao-miao Ji, Lai Chen, Ye Liao, Xiao-qiang Kong, Xi-qiang Xu, Zheng-gen Liao, Danny W. Wilson, Traditional Chinese herbal medicine Astragalus Radix and its effects on intestinal absorption of aconite alkaloids in rats, Chinese Herbal Medicines, 202
3. PubMed ID: 32758603, Yang R, Li Y, Mehmood S, Yan C, Huang Y, Cai J, Ji J, Pan W, Zhang W, Chen Y. Polysaccharides from Armillariella tabescens mycelia ameliorate renal damage in type 2 diabetic mice. Int J Biol Macromol. 2020 Nov 1;162:1682-1691. doi:10.1016/j.ijbiomac.2020.08.006. Epub

Visit [bosterbio.com/anti-occludin-rabbit-monoclonal-antibody-m01246-boster.html](https://www.bosterbio.com/anti-occludin-rabbit-monoclonal-antibody-m01246-boster.html) to see all 4 publications.

## Submit a product review to Biocompare.com

Submit a review of this product to Biocompare.com to receive a \$20 Amazon.com giftcard! Your reviews help your fellow scientists make the right decisions. Thank you for your contribution.



Anti-Occludin OCLN Rabbit Monoclonal Antibody

For Research Use Only. Not for use in diagnostic procedures.