

Anti-HIF-2 alpha EPAS1 Rabbit Monoclonal Antibody

Catalog Number: M01248

About EPAS1

Activated by icilin, eucalyptol, menthol, cold and modulation of intracellular pH. Involved in menthol sensation. Permeable for monovalent cations sodium, potassium, and cesium and divalent cation calcium.

Overview

Product Name	Anti-HIF-2 alpha EPAS1 Rabbit Monoclonal Antibody
Reactive Species	Human, Mouse, Rat
Description	Boster Bio Anti-HIF-2 alpha EPAS1 Rabbit Monoclonal Antibody catalog # M01248. Tested in WB, ICC/IF, Flow Cytometry applications. This antibody reacts with Human, Mouse, Rat.
Conjugate	FITC
Application	Flow Cytometry, IF, ICC, WB
Clonality	Monoclonal ADD-5
Formulation	Rabbit IgG in phosphate buffered saline, pH 7.4, 150 mM NaCl, 0.02% sodium azide and 50% glycerol, 0.4-0.5 mg/ml BSA.
Storage Instructions	Store at -20°C for one year. For short term storage and frequent use, store at 4°C for up to one month. Avoid repeated freeze-thaw cycles.
Host	Rabbit
Uniprot ID	Q99814

Technical Details

Immunogen	A synthesized peptide derived from human HIF-2 alpha
Predicted Reactive Species	Human, Primate
Cross Reactivity	Detects ~20kDa. Does not cross-react with alphaB-crystallin, betaL-crystallin, ̢H- crystallin, gamma-crystallin, HSP25, HSP27 or HSP47 proteins.
Isotype	Rabbit IgG
Form	Liquid
Concentration	Actual concentration vary by lot. Use suggested dilution ratio to decide dilution procedure.
Purification	Affinity-chromatography

Suggested Dilutions

Dilute the sample so that the expected range of concentrations fall within the detection range of this kit.

If the expected range of concentration is unknown, a pilot test should be conducted to decide the optimal dilution ratio for your samples.

Some PubMed article(s) citing the expression level of this target are as follows:

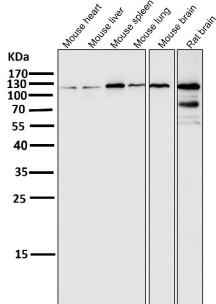
Boster Bio's internal QC testing used:

WB 1:500-1:2000

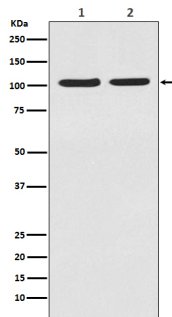
ICC/IF 1:50-1:200

FC 1:50

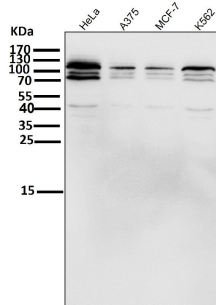
Anti-HIF-2 alpha EPAS1 Rabbit Monoclonal Antibody (M01248) Images



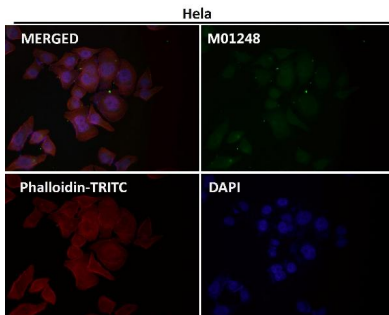
All lanes use the Antibody at 1:1K dilution for 1 hour at room temperature.



Western blot analysis of HIF-2 alpha in (1)MCF-7 cell lysate;(2)HeLa cell lysate.



All lanes use the Antibody at 1:1K dilution for 1 hour at room temperature.



Immunofluorescent analysis using the Antibody at 1:50 dilution.

1 Publications Citing This Product

1. PubMed ID: 27163719, Proper autophagy is indispensable for angiogenesis during chick embryo development

Visit bosterbio.com/anti-hif-2-alpha-rabbit-monoclonal-antibody-m01248-boster.html to see all 1 publications.

Submit a product review to Biocompare.com

Submit a review of this product to Biocompare.com to receive a \$20 Amazon.com giftcard! Your reviews help your fellow scientists make the right decisions. Thank you for your contribution.



Anti-HIF-2 alpha EPAS1 Rabbit Monoclonal Antibody