

Anti-Melanoma gp100 (PMEL) Mouse Monoclonal Antibody [Clone ID: OTI7B2]

Catalog Number: M01262-2

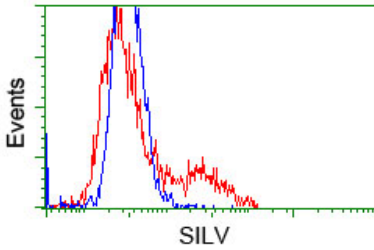
Overview

Product Name	Anti-Melanoma gp100 (PMEL) Mouse Monoclonal Antibody [Clone ID: OTI7B2]
Reactive Species	Human
Description	Boster Bio Anti-SILV (Melanoma gp100) mouse monoclonal antibody, clone OTI7B2 (formerly 7B2). Catalog# M01262-2. Tested in FC, IF. This antibody reacts with Human.
Application	Flow Cytometry, IF
Clonality	Monoclonal OTI7B2
Formulation	PBS (pH 7.3) containing 1% stabilizing protein, 50% glycerol and 0.02% sodium azide. This antibody is supplied in a stabilized formulation. Compatibility with conjugation reactions depends on the chemistry of the conjugation method used. For conjugation methods that are not compatible with the stabilizing components present in this formulation, a carrier-free antibody format is required.
Storage Instructions	Store at -20°C as received.
Host	Mouse
Uniprot ID	P40967

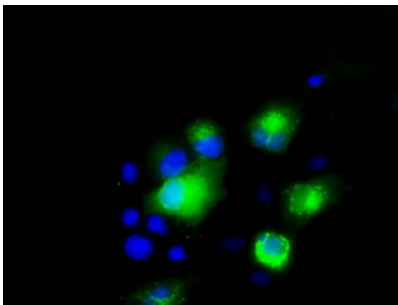
Technical Details

Immunogen	Full length human recombinant protein of human SILV (NP_008859) produced in HEK293T cell.
Isotype	IgG1
Concentration	1 mg/ml
Purification	Purified from mouse ascites fluids or tissue culture supernatant by affinity chromatography (protein A/G)
Suggested Dilutions	IF 1:100 Flow Cytometry 1:100

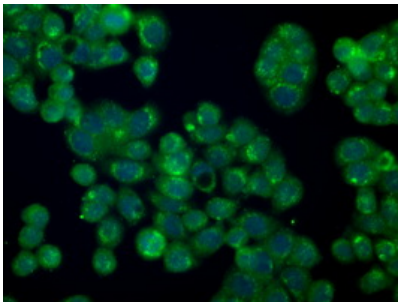
Anti-Melanoma gp100 (PMEL) Mouse Monoclonal Antibody [Clone ID: OTI7B2] (M01262-2) Images



HEK293T cells transfected with either pCMV6-ENTRY SILV (Red) or empty vector control plasmid (Blue) were immunostained with anti-SILV mouse monoclonal (M01262-2)



Anti-SILV mouse monoclonal antibody (M01262-2) immunofluorescent staining of COS7 cells transiently transfected by pCMV6-ENTRY SILV.



Immunofluorescent staining of HT29 cells using anti-SILV mouse monoclonal antibody (M01262-2).

Submit a product review to Biocompare.com

Submit a review of this product to Biocompare.com to receive a \$20 Amazon.com giftcard! Your reviews help your fellow scientists make the right decisions. Thank you for your contribution.



Anti-Melanoma gp100 (PMEL) Mouse Monoclonal Antibody [Clone ID: OTI7B2]

For Research Use Only. Not for use in diagnostic procedures.