

Anti-beta -Actin ACTB Rabbit Monoclonal Antibody, Clone#RM112

Catalog Number: M01263-2

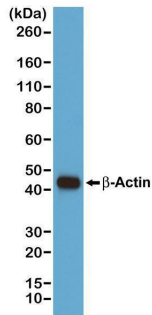
Overview

Product Name	Anti-beta -Actin ACTB Rabbit Monoclonal Antibody, Clone#RM112
Reactive Species	All species
Description	Boster Bio Anti-beta -Actin ACTB Rabbit Monoclonal Antibody, Clone#RM112 (Catalog # M01263-2). Tested in WB, IP, ChIP, ICC, IHC applications. This antibody reacts with All species.
Application	ChIP, IP, IHC, ICC, WB
Clonality	Monoclonal RM112
Formulation	50% Glycerol/PBS with 1% stabilizing protein and 0.09% sodium azide This antibody is supplied in a stabilized formulation. Compatibility with conjugation reactions depends on the chemistry of the conjugation method used. For conjugation methods that are not compatible with the stabilizing components present in this formulation, a carrier-free antibody format is required.
Storage Instructions	Store at -20°C for one year. Avoid repeated freeze-thaw cycles.
Host	Rabbit
Uniprot ID	P60709

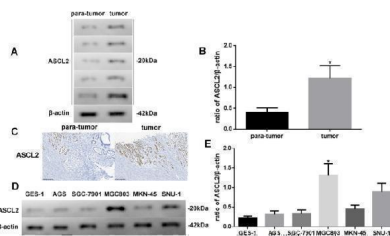
Technical Details

Immunogen	A peptide corresponding to the N-terminus of beta-actin
Cross Reactivity	This antibody reacts to beta-Actin (Actin, cytoplasmic 1). No cross-reactivity with other isoforms of Actin.
Isotype	Rabbit IgG
Form	Liquid
Concentration	0.5-1mg/ml, actual concentration vary by lot. Use suggested dilution ratio to decide dilution procedure.
Purification	Protein A affinity purified from an animal origin-free culture supernatant
Suggested Dilutions	Western Blot (WB): 1:1000 dilution Immunoprecipitation (IP): 1:200 dilution Chromatin IP (ChIP): 1:200 dilution Immunocytochemistry (ICC): 1:200 dilution Immunohistochemistry (IHC): 1:200 dilution.

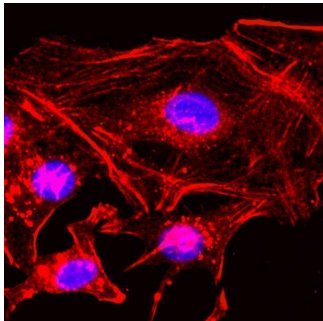
Anti-beta -Actin ACTB Rabbit Monoclonal Antibody, Clone#RM112 (M01263-2) Images



Western Blotting result Western blot of A431 cells, using Clone RM112 at 1/1000 dilution. A -Actin band showed at the predicted MW (42 kDa).



A ASCL2 expressed and B quantificated in different tissues. C IHC for ASCL2 ($\times 100$). D ASCL2 expressed and E quantificated in different cell lines. Protein levels were normalized to beta-actin (tumor vs. para-tumor, and MGC803 vs. other cells, $n = 6$, * P



ICC result Immunocytochemical staining of HeLa cells, using anti-Actin Clone RM112 at 1/200 dilution (red). Nuclei have been labeled with DAPI (blue)

279 Publications Citing This Product

1. PubMed ID: 10.3892/ijmm.2019.4255, CaSR activates PKCdelta to induce cardiomyocyte apoptosis via ER stress-associated apoptotic pathways during ischemia/reperfusion
2. PubMed ID: 10.7150/thno.41028, TMEM16A ameliorates vascular remodeling by suppressing autophagy via inhibiting Bcl-2-p62 complex formation
3. PubMed ID: 10.3390/antiox10020176, Gastro-Protective Effects of Albizia anthelmintica Leaf Extract on Indomethacin-Induced Gastric Ulcer in Wistar Rats: In Silico and In Vivo Studies

Visit [bosterbio.com/anti-beta-actin-rabbit-monoclonal-antibody-clone-rm112-m01263-2-boster.html](https://www.bosterbio.com/anti-beta-actin-rabbit-monoclonal-antibody-clone-rm112-m01263-2-boster.html) to see all 279 publications.

Submit a product review to Biocompare.com

Submit a review of this product to Biocompare.com to receive a \$20 Amazon.com giftcard! Your reviews help your fellow scientists make the right decisions. Thank you for your contribution.



Anti-beta -Actin ACTB Rabbit Monoclonal Antibody, Clone#RM112

For Research Use Only. Not for use in diagnostic procedures.