

## Anti-beta-actin Rabbit Monoclonal Antibody

Catalog Number: M01263-7

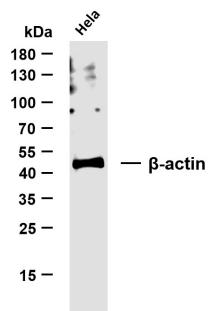
### Overview

Product Name	Anti-beta-actin Rabbit Monoclonal Antibody
Reactive Species	Human, Mouse, Rat
Description	This Recombinant Rabbit Monoclonal Antibody detects endogenous levels of beta-actin protein. Validated for research with WB,ELISA applications. Anti beta-actin is reactive for Human, Mouse, Rat samples
Application	ELISA, WB
Clonality	Monoclonal
Formulation	PBS, 50% glycerol, 0.05% Proclin 300, 0.05% stabilizing protein This antibody is supplied in a stabilized formulation. Compatibility with conjugation reactions depends on the chemistry of the conjugation method used. For conjugation methods that are not compatible with the stabilizing components present in this formulation, a carrier-free antibody format is required.
Storage Instructions	Store at -20°C/1 year
Host	Rabbit
Uniprot ID	P60709

### Technical Details

Isotype	IgG, Kappa
Purification	Protein A
Suggested Dilutions	WB 1:1000-1:5000 ELISA 1:5000-1:20000

## Anti-beta-actin Rabbit Monoclonal Antibody (M01263-7) Images



Whole cell lysates were separated by 10% SDS-PAGE, and the membrane was blotted with anti-beta-actin antibody. The HRP-conjugated Goat anti-Rabbit IgG(H + L) antibody was used to detect the antibody. Lane 1:HeLa Predicted band size: 42kDa Observed band size: 42kDa

### Submit a product review to Biocompare.com

Submit a review of this product to Biocompare.com to receive a \$20 Amazon.com giftcard! Your reviews help your fellow scientists make the right decisions. Thank you for your contribution.



Anti- $\beta$ -actin Rabbit Monoclonal Antibody

For Research Use Only. Not for use in diagnostic procedures.