

Anti-beta-Actin ACTB Monoclonal Antibody [10B7] (biotin)

Catalog Number: M01263-Biotin

About ACTB

Actins are highly conserved proteins that are involved in cell motility, structure and integrity, processes that are crucial for tissue development and the development of organism. The actin cytoskeleton is one of the principal drivers of cell motility and is capable of responding to complex signaling cascades. Recent evidence suggests that it may play key roles in regulating apoptosis and aging. Beta actin is one of six different actin isoforms which have been identified. Like GAPDH, beta-Actin is constitutively expressed at high levels in almost all tissues and cell lines making it ideal for use as a loading control marker in immunoblots.

Overview

Product Name	Anti-beta-Actin ACTB Monoclonal Antibody [10B7] (biotin)
Reactive Species	Chicken, Drosophila, Human, Mouse, Rabbit, Rat, Zebrafish
Description	Boster Bio Anti-beta-Actin ACTB Monoclonal Antibody [10B7] (biotin) (Catalog # M01263-Biotin). Tested in ELISA, WB applications. This antibody reacts with Human, Mouse, Rat, Rabbit, Chicken, Zebrafish, Drosophila.
Application	ELISA, WB
Clonality	Monoclonal Clone: 10B7
Formulation	beta-Actin antibody is supplied in PBS containing 1% BSA and 0.02% sodium azide.
Storage Instructions	beta-Actin antibody can be stored at 4°C for three months and -20°C, stable for up to one year.
Host	Mouse
Uniprot ID	P60709

Technical Details

Immunogen	beta-Actin antibody was raised against a synthetic peptide containing 16 amino acids near the carboxy terminus of beta-actin.
Predicted Reactive Species	Mouse, Rat
Cross Reactivity	beta-Actin antibody is human, mouse, rat, rabbit, chicken, zebrafish and drosophila reactive.
Isotype	IgG
Form	Liquid
Concentration	1 mg/mL
Purification	beta-Actin Antibody is affinity chromatography purified via peptide column.

Suggested Dilutions

Dilute the sample so that the expected range of concentrations fall within the detection range of this kit.

If the expected range of concentration is unknown, a pilot test should be conducted to decide the optimal dilution ratio for your samples.

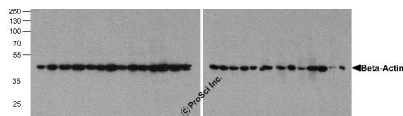
Some PubMed article(s) citing the expression level of this target are as follows:

Boster Bio's internal QC testing used:

beta-Actin antibody can be used for detection of Beta-Actin by Western blot at 0.5 - 1 u/ml.

Antibody validated: Western Blot in human, mouse, and rat samples. All other applications and species not yet tested. Optimal dilutions for each application should be determined by the researcher.

Anti-beta-Actin ACTB Monoclonal Antibody [10B7] (biotin) (M01263-Biotin) Images



Western blot analysis of Beta-Actin in 293, A431, A549, Daudi, HeLa, HepG2, Jurkat, K562, MOLT, 3T3, Raji, Ramos, THP-1, U937, human brain, mouse brain, rat brain, rabbit brain, mouse lung, rat lung, rat liver, rabbit liver, rabbit spleen, chicken liver, chicken small intestine, zebrafish, and drosophila lysate with beta-Actin antibody at 1 ug/mL.

Submit a product review to Biocompare.com

Submit a review of this product to Biocompare.com to receive a \$20 Amazon.com giftcard! Your reviews help your fellow scientists make the right decisions. Thank you for your contribution.



Anti-beta-Actin ACTB Monoclonal Antibody [10B7] (biotin)