

## Anti-LIS1 Rabbit Monoclonal Antibody

Catalog Number: M01273

### About PAFAH1B1

Activated by icilin, eucalyptol, menthol, cold and modulation of intracellular pH. Involved in menthol sensation. Permeable for monovalent cations sodium, potassium, and cesium and divalent cation calcium.

### Overview

Product Name	Anti-LIS1 Rabbit Monoclonal Antibody
Reactive Species	Human, Mouse, Rat
Description	Boster Bio Anti-LIS1 Rabbit Monoclonal Antibody catalog # M01273. Tested in WB application. This antibody reacts with Human, Mouse, Rat.
Conjugate	FITC
Application	WB
Clonality	Monoclonal 19P48
Formulation	Rabbit IgG in phosphate buffered saline, pH 7.4, 150mM NaCl, 0.02% sodium azide and 50% glycerol, 0.4-0.5mg/ml BSA.
Storage Instructions	Store at -20°C for one year. For short term storage and frequent use, store at 4°C for up to one month. Avoid repeated freeze-thaw cycles.
Host	Rabbit
Uniprot ID	P43034

### Technical Details

Immunogen	A synthesized peptide derived from human LIS1
Predicted Reactive Species	Human, Primate
Cross Reactivity	Detects ~20kDa. Does not cross-react with alphaB-crystallin, betaL-crystallin, ̢H- crystallin, gamma-crystallin, HSP25, HSP27 or HSP47 proteins.
Isotype	IgG
Form	Liquid
Concentration	Actual concentration vary by lot. Use suggested dilution ratio to decide dilution procedure.
Purification	Affinity-chromatography

**Suggested Dilutions**

Dilute the sample so that the expected range of concentrations fall within the detection range of this kit.

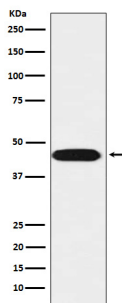
If the expected range of concentration is unknown, a pilot test should be conducted to decide the optimal dilution ratio for your samples.

Some PubMed article(s) citing the expression level of this target are as follows:

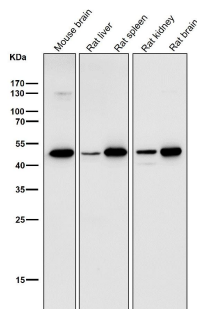
Boster Bio's internal QC testing used:

WB 1:500-1:2000

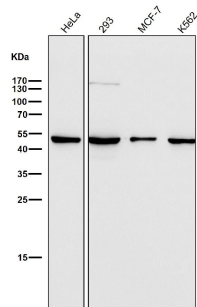
## Anti-LIS1 Rabbit Monoclonal Antibody (M01273) Images



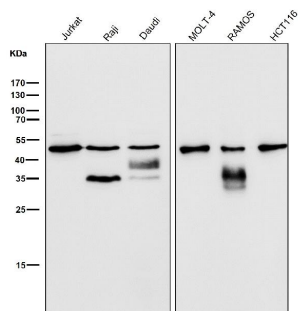
Western blot analysis of LIS1 expression in SH-SY5Y cell lysate.



All lanes use the Antibody at 1:500 dilution for 1 hour at room temperature.

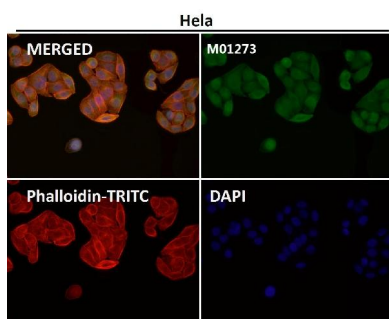
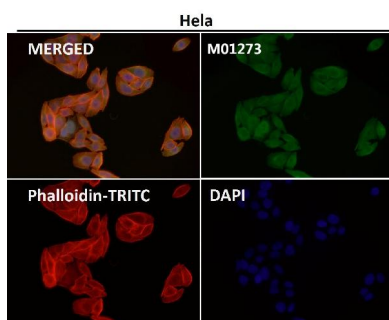


All lanes use the Antibody at 1:500 dilution for 1 hour at room temperature.

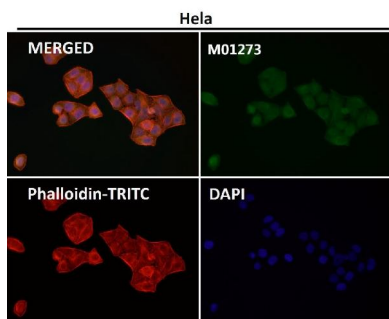


All lanes use the Antibody at 1:500 dilution for 1 hour at room temperature.

Immunofluorescent analysis using the Antibody at 1:50 dilution.



Immunofluorescent analysis using the Antibody at 1:50 dilution.



Immunofluorescent analysis using the Antibody at 1:150 dilution.

## Submit a product review to Biocompare.com

Submit a review of this product to Biocompare.com to receive a \$20 Amazon.com giftcard! Your reviews help your fellow scientists make the right decisions. Thank you for your contribution.



Anti-LIS1 Rabbit Monoclonal Antibody