

Anti-Hsp60 Antibody

Catalog Number: M01280-4

About HSPD1

Implicated in mitochondrial protein import and macromolecular assembly. May facilitate the correct folding of imported proteins. May also prevent misfolding and promote the refolding and proper assembly of unfolded polypeptides generated under stress conditions in the mitochondrial matrix.

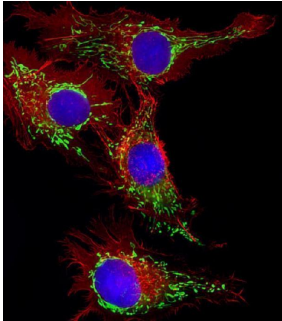
Overview

Product Name	Anti-Hsp60 Antibody
Reactive Species	Human, Mouse, Rat
Description	Boster Bio Anti-Hsp60 Antibody (Catalog # M01280-4). Tested in WB, Flow Cytometry, IHC-P, IF application(s). This antibody reacts with Human, Mouse, Rat.
Application	Flow Cytometry, IF, IHC-P, WB
Clonality	Polyclonal
Formulation	Purified polyclonal antibody supplied in PBS with 0.09% (W/V) sodium azide.
Storage Instructions	Maintain refrigerated at 2-8°C for up to 2 weeks. For long-term storage, store at -20°C in small aliquots to prevent freeze-thaw cycles.
Host	Rabbit
Uniprot ID	P10809

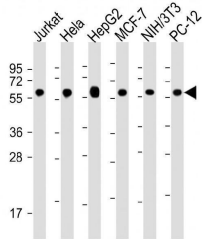
Technical Details

Immunogen	This Hsp60 antibody is generated from a rabbit immunized with a KLH conjugated synthetic peptide between 396-430 amino acids from human Hsp60.
Predicted Reactive Species	Bovine, Chicken, Hamster
Isotype	Rabbit IgG
Purification	This antibody is purified through a protein A column, followed by peptide affinity purification.
Suggested Dilutions	IF: 1:25 WB: 1:16000 IHC-P: 1:25 FC: 1:25

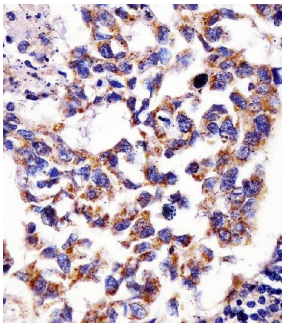
Anti-Hsp60 Antibody (M01280-4) Images



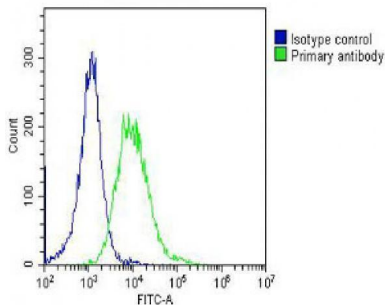
Immunofluorescent analysis of 4% paraformaldehyde-fixed, 0.1% Triton X-100 permeabilized HepG2 (human liver hepatocellular carcinoma cell line) cells labeling Hsp60 with M01280-4 at 1/25 dilution, followed by Dylight® 488-conjugated goat anti-rabbit IgG secondary antibody at 1/200 dilution (green). Immunofluorescence image showing cytoplasm staining on HepG2 cell line. The nuclear counter stain is DAPI (blue).



All lanes : Anti-Hsp60 Antibody at 1:16000 dilution
Lane 1: Jurkat whole cell lysate
Lane 2: HeLa whole cell lysate
Lane 3: HepG2 whole cell lysate
Lane 4: MCF-7 whole cell lysate
Lane 5: NIH/3T3 whole cell lysate
Lane 6: PC-12 whole cell lysate
Lysates/proteins at 20 µg per lane. Secondary Goat Anti-Rabbit IgG, (H+L), Peroxidase conjugated at 1/10000 dilution. Predicted band size : 61 kDa
Blocking/Dilution buffer: 5% NFDM/TBST.



M01280-4 staining Hsp60 in human lung adenocarcinoma tissue sections by Immunohistochemistry (IHC-P -paraformaldehyde-fixed, paraffin-embedded sections). Tissue was fixed with formaldehyde and blocked with 3% BSA for 0.5 hour at room temperature; antigen retrieval was by heat mediation with a citrate buffer (pH6). Samples were incubated with primary antibody (1/25) for 1 hours at 37°C. A undiluted biotinylated goat polyvalent antibody was used as the secondary antibody.



Overlay histogram showing HeLa cells stained with M01280-4 (green line). The cells were fixed with 2% paraformaldehyde (10 min) and then permeabilized with 90% methanol for 10 min. The cells were then incubated in 2% bovine serum albumin to block non-specific protein-protein interactions followed by the antibody (M01280-4, 1:25 dilution) for 60 min at 37°C. The secondary antibody used was Goat-Anti-Rabbit IgG, DyLight® 488 Conjugated Highly Cross-Adsorbed at 1/200 dilution for 40 min at 37°C. Isotype control antibody (blue line) was rabbit IgG (1µg/1x10⁶ cells) used under the same conditions. Acquisition of >10,000 events was performed.

Submit a product review to [Biocompare.com](https://www.biocompare.com)

Submit a review of this product to [Biocompare.com](https://www.biocompare.com) to receive a \$20 Amazon.com giftcard! Your reviews help your fellow scientists make the right decisions. Thank you for your contribution.



Anti-Hsp60 Antibody

For Research Use Only. Not for use in diagnostic procedures.