

## Anti-Mouse Kdm6a Antibody (C-term)

Catalog Number: M01286

### About Kdm6a

Histone demethylase that specifically demethylates 'Lys- 27' of histone H3, thereby playing a central role in histone code. Demethylates trimethylated and dimethylated but not monomethylated H3 'Lys-27'. Plays a central role in regulation of posterior development, by regulating HOX gene expression. Demethylation of 'Lys-27' of histone H3 is concomitant with methylation of 'Lys-4' of histone H3, and regulates the recruitment of the PRC1 complex and monoubiquitination of histone H2A (By similarity).

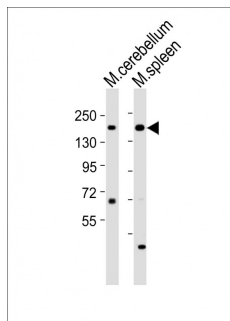
### Overview

Product Name	Anti-Mouse Kdm6a Antibody (C-term)
Reactive Species	Mouse
Description	Boster Bio Anti-Mouse Kdm6a Antibody (C-term) (Catalog # M01286). Tested in WB application(s). This antibody reacts with Mouse.
Application	WB
Clonality	Polyclonal
Formulation	Purified polyclonal antibody supplied in PBS with 0.09% (W/V) sodium azide.
Storage Instructions	Maintain refrigerated at 2-8°C for up to 2 weeks. For long-term storage, store at -20°C in small aliquots to prevent freeze-thaw cycles.
Host	Rabbit
Uniprot ID	O70546

### Technical Details

Immunogen	This mouse Kdm6a antibody is generated from a rabbit immunized with a KLH conjugated synthetic peptide between 1041-1074 amino acids from the C-terminal region of mouse Kdm6a.
Predicted Reactive Species	Bovine, Chicken, Horse, Monkey, Pig, Sheep, Xenopus
Isotype	Rabbit IgG
Purification	This antibody is purified through a protein A column, followed by peptide affinity purification.
Suggested Dilutions	WB: 1:2000

## Anti-Mouse Kdm6a Antibody (C-term) (M01286) Images



All lanes : Anti-Kdm6a Antibody (C-term) at 1:2000 dilution  
Lane 1: mouse cerebellum lysates  
Lane 2: mouse spleen lysates  
Lysates/proteins at 20 µg per lane.  
Secondary Goat Anti-Rabbit IgG, (H+L), Peroxidase conjugated at 1/10000 dilution  
Predicted band size : 154 kDa  
Blocking/Dilution buffer: 5% NFDN/TBST.

### Submit a product review to Biocompare.com

Submit a review of this product to Biocompare.com to receive a \$20 Amazon.com giftcard! Your reviews help your fellow scientists make the right decisions. Thank you for your contribution.



Anti-Mouse Kdm6a Antibody (C-term)

For Research Use Only. Not for use in diagnostic procedures.