

## Anti-SATB1 Mouse Monoclonal Antibody [Clone ID: OTI11E8]

Catalog Number: M01312-1

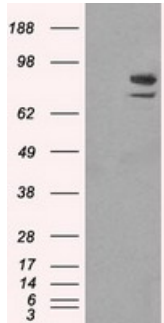
### Overview

|                      |  |
|----------------------|--|
| Product Name         | Anti-SATB1 Mouse Monoclonal Antibody [Clone ID: OTI11E8]   |
| Reactive Species     | Human, Mouse, Rat  |
| Description          | Boster Bio SATB1 mouse monoclonal antibody, clone OTI11E8 (formerly 11E8). Catalog# M01312-1. Tested in FC, IF, IHC, WB. This antibody reacts with Human, Mouse, Rat.  |
| Application          | Flow Cytometry, IF, IHC, WB  |
| Clonality            | Monoclonal OTI11E8   |
| Formulation          | PBS (pH 7.3) containing 1% stabilizing protein, 50% glycerol and 0.02% sodium azide. This antibody is supplied in a stabilized formulation. Compatibility with conjugation reactions depends on the chemistry of the conjugation method used. For conjugation methods that are not compatible with the stabilizing components present in this formulation, a carrier-free antibody format is required. |
| Storage Instructions | Store at -20°C as received.  |
| Host                 | Mouse  |
| Uniprot ID           | Q01826   |

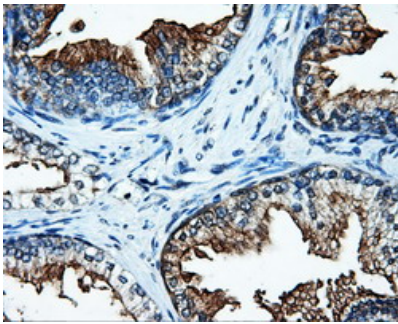
### Technical Details

|                     |   |
|---------------------|---|
| Immunogen           | Full length human recombinant protein of human SATB1 (NP_002962) produced in HEK293T cell.                |
| Isotype             | IgG1  |
| Concentration       | 1 mg/ml   |
| Purification        | Purified from mouse ascites fluids or tissue culture supernatant by affinity chromatography (protein A/G) |
| Suggested Dilutions | WB 1:2000<br>IHC 1:50<br>IF 1:100<br>Flow Cytometry 1:100   |

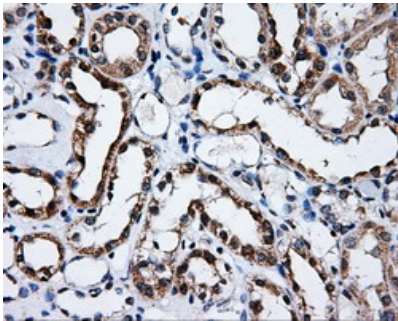
## Anti-SATB1 Mouse Monoclonal Antibody [Clone ID: OTI11E8] (M01312-1) Images



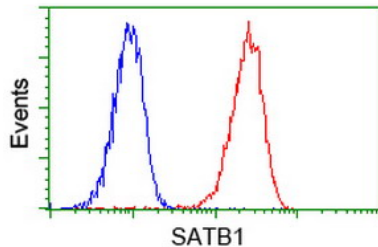
HEK293T cells were transfected with the pCMV6-ENTRY control (Left lane) or pCMV6-ENTRY SATB1 (Right lane) cDNA for 48 hrs and lysed. Equivalent amounts of cell lysates (5 ug per lane) were separated by SDS-PAGE and immunoblotted with anti-SATB1.



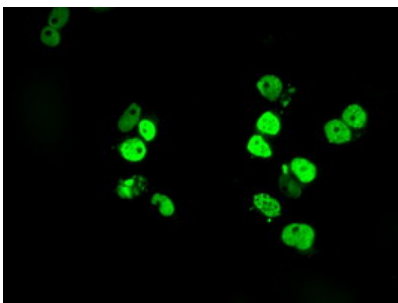
Immunohistochemical staining of paraffin-embedded Human prostate tissue within the normal limits using anti-SATB1 mouse monoclonal antibody. (Heat-induced epitope retrieval by 10mM citric buffer)



Immunohistochemical staining of paraffin-embedded Human Kidney tissue within the normal limits using anti-SATB1 mouse monoclonal antibody. (Heat-induced epitope retrieval by 10mM citric buffer)



Flow cytometric Analysis of Jurkat cells



Anti-SATB1 mouse monoclonal antibody (M01312-1) immunofluorescent staining of COS7 cells transiently transfected by pCMV6-ENTRY SATB1.

## Submit a product review to Biocompare.com

Submit a review of this product to Biocompare.com to receive a \$20 Amazon.com giftcard! Your reviews help your fellow scientists make the right decisions. Thank you for your contribution.



Anti-SATB1 Mouse Monoclonal Antibody [Clone ID: OT111E8]

For Research Use Only. Not for use in diagnostic procedures.