

Anti-ADH1B Mouse Monoclonal Antibody [Clone ID: OTI4F12]

Catalog Number: M01316

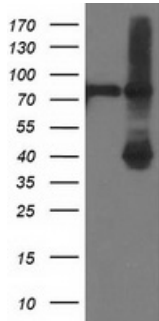
Overview

Product Name	Anti-ADH1B Mouse Monoclonal Antibody [Clone ID: OTI4F12]
Reactive Species	Dog, Human, Rat
Description	Boster Bio ADH1B mouse monoclonal antibody, clone OTI4F12 (formerly 4F12). Catalog# M01316. Tested in FC, IF, IHC, WB. This antibody reacts with Human, Rat, Dog.
Application	Flow Cytometry, IF, IHC, WB
Clonality	Monoclonal OTI4F12
Formulation	PBS (pH 7.3) containing 1% stabilizing protein, 50% glycerol and 0.02% sodium azide. This antibody is supplied in a stabilized formulation. Compatibility with conjugation reactions depends on the chemistry of the conjugation method used. For conjugation methods that are not compatible with the stabilizing components present in this formulation, a carrier-free antibody format is required.
Storage Instructions	Store at -20°C as received.
Host	Mouse
Uniprot ID	P00325

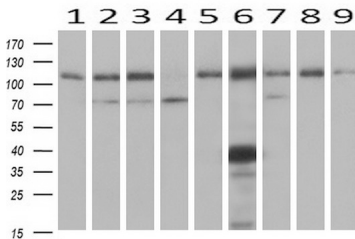
Technical Details

Immunogen	Full length human recombinant protein of human ADH1B (NP_000659) produced in HEK293T cell.
Isotype	IgG2a
Concentration	0.89 mg/ml
Purification	Purified from mouse ascites fluids or tissue culture supernatant by affinity chromatography (protein A/G)
Suggested Dilutions	WB 1:500 IHC 1:150 IF 1:100 Flow Cytometry 1:100

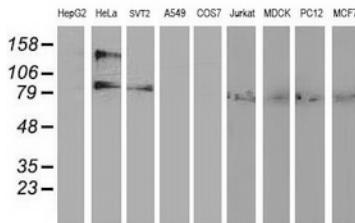
Anti-ADH1B Mouse Monoclonal Antibody [Clone ID: OTI4F12] (M01316) Images



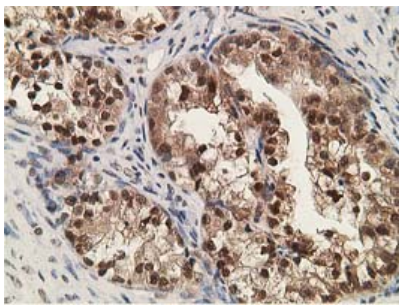
HEK293T cells were transfected with the pCMV6-ENTRY control (Left lane) or pCMV6-ENTRY ADH1B (Right lane) cDNA for 48 hrs and lysed. Equivalent amounts of cell lysates (5 ug per lane) were separated by SDS-PAGE and immunoblotted with anti-ADH1B.



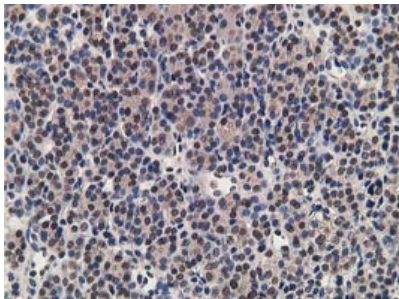
Western blot analysis of extracts (10ug) from 9 Human tissue by using anti-ADH1B monoclonal antibody at 1:1000 (1: Testis; 2: Omentum; 3: Uterus; 4: Breast; 5: Brain; 6: Liver; 7: Ovary; 8: Thyroid gland; 9: colon).



Western blot analysis of extracts (35ug) from 9 different cell lines by using anti-ADH1B monoclonal antibody.

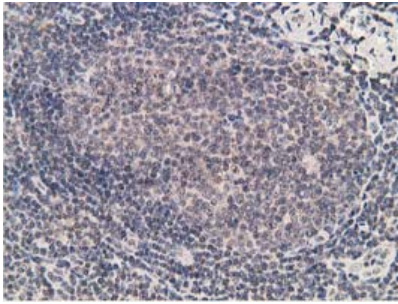


Immunohistochemical staining of paraffin-embedded Adenocarcinoma of Human ovary tissue using anti-ADH1B mouse monoclonal antibody. (Heat-induced epitope retrieval by 10mM citric buffer)

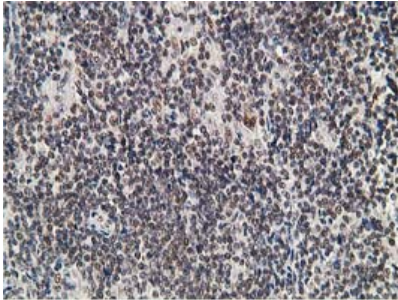


Immunohistochemical staining of paraffin-embedded Carcinoma of Human thyroid tissue using anti-ADH1B mouse monoclonal antibody. (Heat-induced epitope retrieval by 10mM citric buffer)

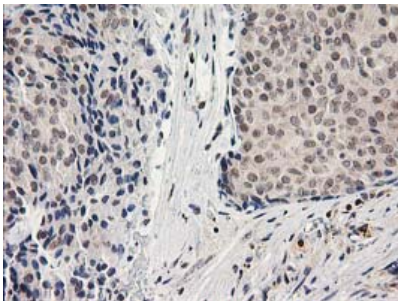
Immunohistochemical staining of paraffin-embedded Human



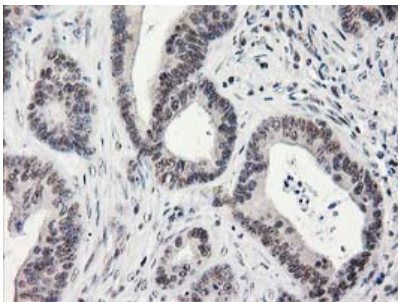
lymph node tissue within the normal limits using anti-ADH1B mouse monoclonal antibody. (Heat-induced epitope retrieval by 10mM citric buffer)



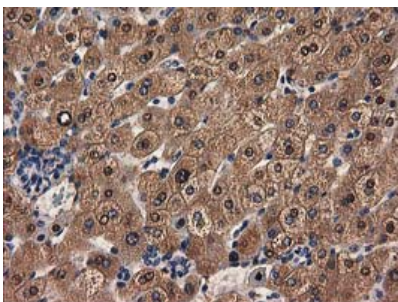
Immunohistochemical staining of paraffin-embedded Human lymphoma tissue using anti-ADH1B mouse monoclonal antibody. (Heat-induced epitope retrieval by 10mM citric buffer)



Immunohistochemical staining of paraffin-embedded Adenocarcinoma of Human breast tissue using anti-ADH1B mouse monoclonal antibody. (Heat-induced epitope retrieval by 10mM citric buffer)

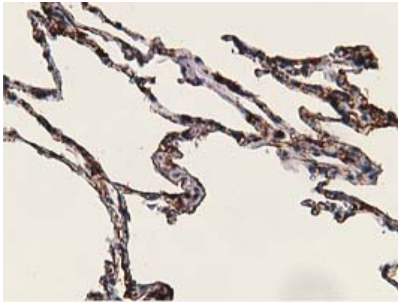


Immunohistochemical staining of paraffin-embedded Adenocarcinoma of Human colon tissue using anti-ADH1B mouse monoclonal antibody. (Heat-induced epitope retrieval by 10mM citric buffer)

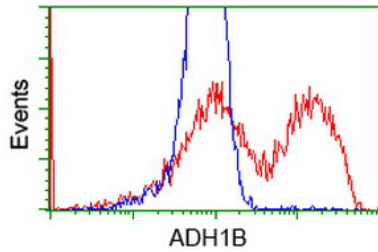


Immunohistochemical staining of paraffin-embedded Human liver tissue within the normal limits using anti-ADH1B mouse monoclonal antibody. (Heat-induced epitope retrieval by 10mM citric buffer)

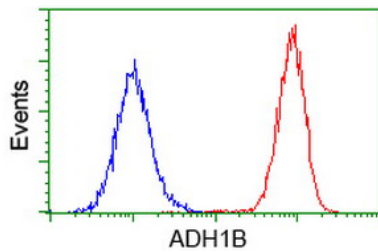
Immunohistochemical staining of paraffin-embedded Human lung tissue within the normal limits using anti-ADH1B mouse monoclonal antibody. (Heat-induced epitope retrieval by



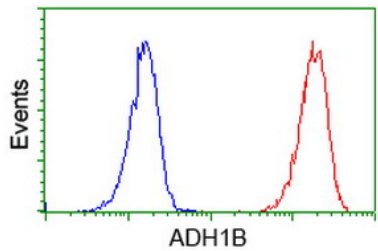
10mM citric buffer



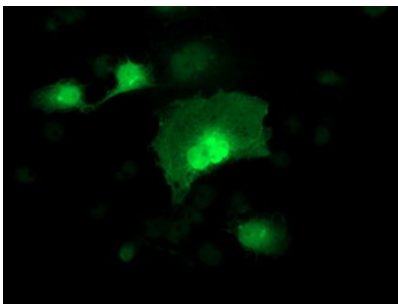
HEK293T cells transfected with either ADH1B (Myc-DDK-tagged) overexpress plasmid (Red) or empty vector control plasmid (Blue) were immunostained by anti-ADH1B antibody (M01316)



Flow cytometric Analysis of HeLa cells

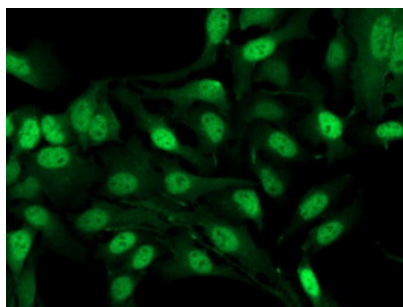


Flow cytometric Analysis of Jurkat cells



Anti-ADH1B mouse monoclonal antibody (M01316) immunofluorescent staining of COS7 cells transiently transfected by pCMV6-ENTRY ADH1B.

Immunofluorescent staining of HeLa cells using anti-ADH1B mouse monoclonal antibody (M01316).



Submit a product review to Biocompare.com

Submit a review of this product to Biocompare.com to receive a \$20 Amazon.com giftcard! Your reviews help your fellow scientists make the right decisions. Thank you for your contribution.



Anti-ADH1B Mouse Monoclonal Antibody [Clone ID: OTI4F12]

For Research Use Only. Not for use in diagnostic procedures.