

Anti-TTF1 (Thyroid transcription factor 1) NKX2-1 Rabbit Monoclonal Antibody, Clone#RM373

Catalog Number: M01322-2

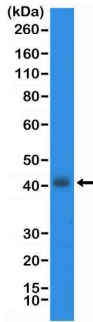
Overview

Product Name	Anti-TTF1 (Thyroid transcription factor 1) NKX2-1 Rabbit Monoclonal Antibody, Clone#RM373
Reactive Species	Human
Description	Boster Bio Anti-TTF1 (Thyroid transcription factor 1) NKX2-1 Rabbit Monoclonal Antibody, Clone#RM373 (Catalog # M01322-2). Tested in IHC, WB applications. This antibody reacts with Human.
Application	IHC, WB
Clonality	Monoclonal RM373
Formulation	50% Glycerol/PBS with 1% stabilizing protein and 0.09% sodium azide This antibody is supplied in a stabilized formulation. Compatibility with conjugation reactions depends on the chemistry of the conjugation method used. For conjugation methods that are not compatible with the stabilizing components present in this formulation, a carrier-free antibody format is required.
Storage Instructions	Store at -20°C for one year. Avoid repeated freeze-thaw cycles.
Host	Rabbit
Uniprot ID	P43699

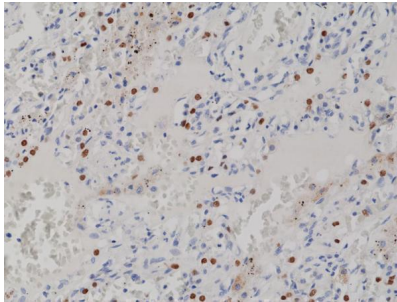
Technical Details

Immunogen	A peptide corresponding to N-terminus of human TTF1 (Thyroid transcription factor 1) (Homeobox protein Nkx-2.1)
Cross Reactivity	This antibody reacts to human TTF1 ((Thyroid transcription factor 1) (Homeobox protein Nkx-2.1). It may also react to mouse and rat TTF1, as predicted by immunogen homology.
Isotype	Rabbit IgG
Form	Liquid
Concentration	0.5-1mg/ml, actual concentration vary by lot. Use suggested dilution ratio to decide dilution procedure.
Purification	Protein A affinity purified from an animal origin-free culture supernatant
Suggested Dilutions	Immunohistochemistry (IHC): 1:500-1:1000 dilution WB: 1:1000-1:20000 dilution.

Anti-TTF1 (Thyroid transcription factor 1) NKX2-1 Rabbit Monoclonal Antibody, Clone#RM373 (M01322-2) Images



Western Blotting result Western Blot of TT cell lysate using anti-TTF1 rabbit monoclonal antibody (Clone RM373) at a 1:20000 dilution.



IHC result Immunohistochemical staining of formalin fixed and paraffin embedded human lung cancer tissue section using anti-TTF1 rabbit monoclonal antibody (Clone RM373) at a 1:1000 dilution.

Submit a product review to Biocompare.com

Submit a review of this product to Biocompare.com to receive a \$20 Amazon.com giftcard! Your reviews help your fellow scientists make the right decisions. Thank you for your contribution.



Anti-TTF1 (Thyroid transcription factor 1) NKX2-1 Rabbit Monoclonal Antibody, Clone#RM373

For Research Use Only. Not for use in diagnostic procedures.