

Anti-(Mouse) Eed Antibody (Center)

Catalog Number: M01345

About Eed

Polycomb group (PcG) protein. Component of the PRC2/EED- EZH2 complex, which methylates 'Lys-9' and 'Lys-27' of histone H3, leading to transcriptional repression of the affected target gene. Also recognizes 'Lys-26' trimethylated histone H1 with the effect of inhibiting PRC2 complex methyltransferase activity on nucleosomal histone H3 'Lys-27', whereas H3 'Lys-27' recognition has the opposite effect, enabling the propagation of this repressive mark (By similarity). The PRC2/EED-EZH2 complex may also serve as a recruiting platform for DNA methyltransferases, thereby linking two epigenetic repression systems (By similarity). Genes repressed by the PRC2/EED-EZH2 complex include HOXA7, HOXB6 and HOXC8. Plays a role in X chromosome inactivation (XCI), in which one of the two X chromosomes in female mammals is transcriptionally silenced to equalize X-linked gene dosage with XY males. Required for stable maintenance of XCI in both embryonic and extraembryonic tissues. May prevent transcriptional activation of facultative heterochromatin during differentiation. Required for development of secondary trophoblast giant cells during placental development. May regulate hippocampal synaptic plasticity in the developing brain.

Overview

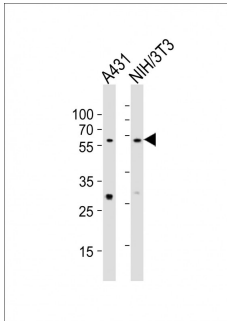
Product Name	Anti-(Mouse) Eed Antibody (Center)
Reactive Species	Human, Mouse
Description	Boster Bio Anti-(Mouse) Eed Antibody (Center) (Catalog # M01345). Tested in WB, IHC-P application(s). This antibody reacts with Human, Mouse.
Application	IHC-P, WB
Clonality	Polyclonal
Formulation	Purified polyclonal antibody supplied in PBS with 0.09% (W/V) sodium azide.
Storage Instructions	Maintain refrigerated at 2-8°C for up to 2 weeks. For long-term storage, store at -20°C in small aliquots to prevent freeze-thaw cycles.
Host	Rabbit
Uniprot ID	Q921E6

Technical Details

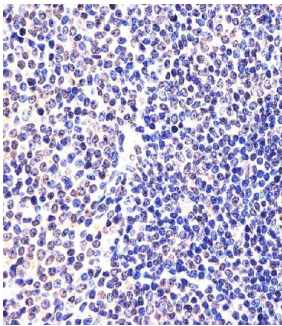
Immunogen	This mouse Eed antibody is generated from a rabbit immunized with a KLH conjugated synthetic peptide between 269-303 amino acids from the Central region of mouse Eed.
Predicted Reactive Species	Bovine, Chicken, Horse, Monkey, Pig, Sheep, Xenopus
Isotype	Rabbit IgG
Purification	This antibody is purified through a protein A column, followed by peptide affinity purification.
Suggested Dilutions	WB: 1:1000

IHC-P: 1:25

Anti-(Mouse) Eed Antibody (Center) (M01345) Images



All lanes : Anti-Eed Antibody (Center) at 1:1000 dilution
Lane 1: A431 whole cell lysates
Lane 2: NIH/3T3 whole cell lysates
Lysates/proteins at 20 µg per lane. Secondary Goat Anti-Rabbit IgG, (H+L), Peroxidase conjugated at 1/10000 dilution
Predicted band size : 50 kDa
Blocking/Dilution buffer: 5% NFDN/TBST.



M01345 staining (Mouse) Eed in Mouse spleen tissue sections by Immunohistochemistry (IHC-P -paraformaldehyde-fixed, paraffin-embedded sections). Tissue was fixed with formaldehyde and blocked with 3% BSA for 0.5 hour at room temperature; antigen retrieval was by heat mediation with a citrate buffer (pH6). Samples were incubated with primary antibody (1/25) for 1 hours at 37°C. A undiluted biotinylated goat polyvalent antibody was used as the secondary antibody.

Submit a product review to [Biocompare.com](https://www.biocompare.com)

Submit a review of this product to [Biocompare.com](https://www.biocompare.com) to receive a \$20 Amazon.com giftcard! Your reviews help your fellow scientists make the right decisions. Thank you for your contribution.



Anti-(Mouse) Eed Antibody (Center)

For Research Use Only. Not for use in diagnostic procedures.