

## Anti-DDT Mouse Monoclonal Antibody [Clone ID: OTI3B10]

Catalog Number: M01354-1

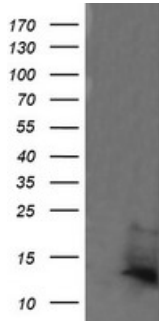
### Overview

Product Name	Anti-DDT Mouse Monoclonal Antibody [Clone ID: OTI3B10]
Reactive Species	Human
Description	Boster Bio DDT mouse monoclonal antibody, clone OTI3B10 (formerly 3B10). Catalog# M01354-1. Tested in IF, IHC, WB. This antibody reacts with Human.
Application	IF, IHC, WB
Clonality	Monoclonal OTI3B10
Formulation	PBS (pH 7.3) containing 1% stabilizing protein, 50% glycerol and 0.02% sodium azide. This antibody is supplied in a stabilized formulation. Compatibility with conjugation reactions depends on the chemistry of the conjugation method used. For conjugation methods that are not compatible with the stabilizing components present in this formulation, a carrier-free antibody format is required.
Storage Instructions	Store at -20°C as received.
Host	Mouse
Uniprot ID	P30046

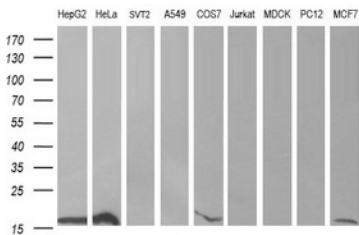
### Technical Details

Immunogen	Full length human recombinant protein of human DDT (NP_001346) produced in HEK293T cell.
Isotype	IgG1
Concentration	1 mg/ml
Purification	Purified from mouse ascites fluids or tissue culture supernatant by affinity chromatography (protein A/G)
Suggested Dilutions	WB 1:2000 IHC 1:150

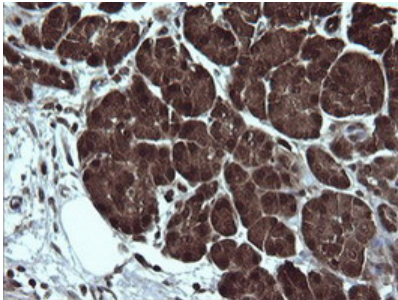
## Anti-DDT Mouse Monoclonal Antibody [Clone ID: OTI3B10] (M01354-1) Images



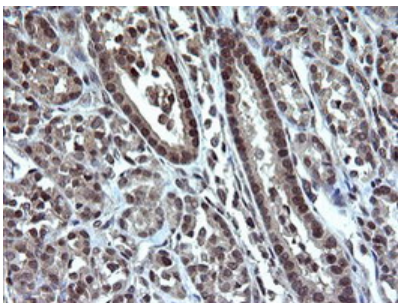
HEK293T cells were transfected with the pCMV6-ENTRY control (Left lane) or pCMV6-ENTRY DDT (Right lane) cDNA for 48 hrs and lysed. Equivalent amounts of cell lysates (5 ug per lane) were separated by SDS-PAGE and immunoblotted with anti-DDT.



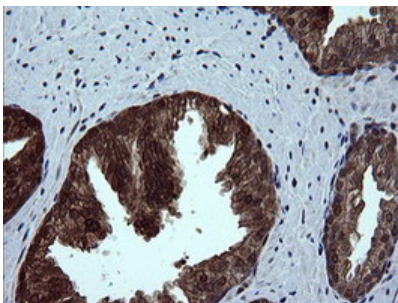
Western blot analysis of extracts (35ug) from 9 different cell lines by using anti-DDT monoclonal antibody (HepG2: human; HeLa: human; SVT2: mouse; A549: human; COS7: monkey; Jurkat: human; MDCK: canine; PC12: rat; MCF7: human).



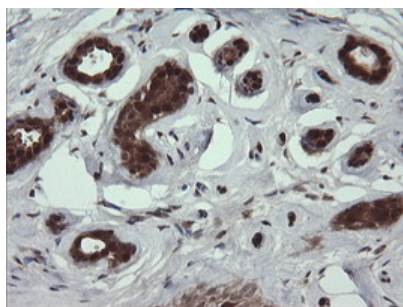
Immunohistochemical staining of paraffin-embedded Human pancreas tissue within the normal limits using anti-DDT mouse monoclonal antibody. (Heat-induced epitope retrieval by 10mM citric buffer)



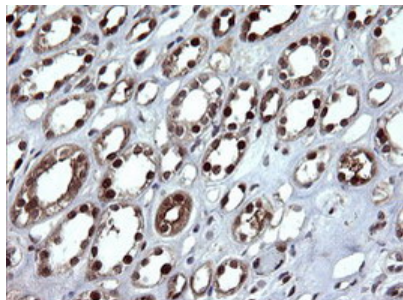
Immunohistochemical staining of paraffin-embedded Carcinoma of Human thyroid tissue using anti-DDT mouse monoclonal antibody. (Heat-induced epitope retrieval by 10mM citric buffer)



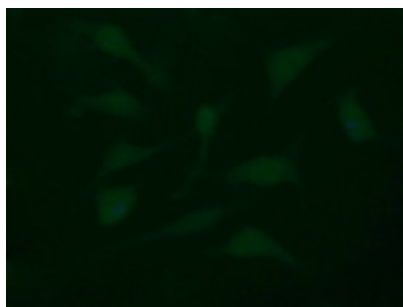
Immunohistochemical staining of paraffin-embedded Human prostate tissue within the normal limits using anti-DDT mouse monoclonal antibody. (Heat-induced epitope retrieval by 10mM citric buffer)



Immunohistochemical staining of paraffin-embedded Human breast tissue within the normal limits using anti-DDT mouse monoclonal antibody. (Heat-induced epitope retrieval by 10mM citric buffer)



Immunohistochemical staining of paraffin-embedded Human Kidney tissue within the normal limits using anti-DDT mouse monoclonal antibody. (Heat-induced epitope retrieval by 10mM citric buffer)



Immunofluorescent staining of HeLa cells using anti-DDT mouse monoclonal antibody (M01354-1) (1:100).

## Submit a product review to [Biocompare.com](https://www.biocompare.com)

Submit a review of this product to [Biocompare.com](https://www.biocompare.com) to receive a \$20 Amazon.com giftcard! Your reviews help your fellow scientists make the right decisions. Thank you for your contribution.



Anti-DDT Mouse Monoclonal Antibody [Clone ID: OT13B10]

For Research Use Only. Not for use in diagnostic procedures.