

Anti-CK18 (Cytokeratin-18) KRT18 Rabbit Monoclonal Antibody, Clone#RM279

Catalog Number: M01357-3

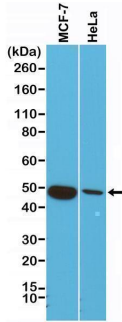
Overview

Product Name	Anti-CK18 (Cytokeratin-18) KRT18 Rabbit Monoclonal Antibody, Clone#RM279
Reactive Species	Human
Description	Boster Bio Anti-CK18 (Cytokeratin-18) KRT18 Rabbit Monoclonal Antibody, Clone#RM279 (Catalog # M01357-3). Tested in IHC, WB applications. This antibody reacts with Human.
Application	IHC, WB
Clonality	Monoclonal RM279
Formulation	50% Glycerol/PBS with 1% stabilizing protein and 0.09% sodium azide This antibody is supplied in a stabilized formulation. Compatibility with conjugation reactions depends on the chemistry of the conjugation method used. For conjugation methods that are not compatible with the stabilizing components present in this formulation, a carrier-free antibody format is required.
Storage Instructions	Store at -20°C for one year. Avoid repeated freeze-thaw cycles.
Host	Rabbit
Uniprot ID	P05783

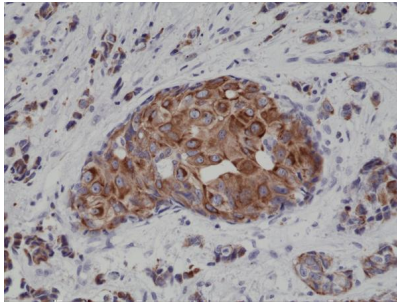
Technical Details

Immunogen	A peptide corresponding to the N-terminus of human Cytokeratin-18.
Cross Reactivity	This antibody reacts to human CK18 (Cytokeratin-18).
Isotype	Rabbit IgG
Form	Liquid
Concentration	0.5-1mg/ml, actual concentration vary by lot. Use suggested dilution ratio to decide dilution procedure.
Purification	Protein A affinity purified from an animal origin-free culture supernatant
Suggested Dilutions	Immunohistochemistry (IHC): 1:1000-1:4000 dilution WB: 1:1000-1:2000 dilution.

Anti-CK18 (Cytokeratin-18) KRT18 Rabbit Monoclonal Antibody, Clone#RM279 (M01357-3) Images



Western Blotting result Western Blot of HeLa cells lysates using Anti-CK18 Rabbit Monoclonal Antibody (Clone RM279) at a 1:1000 dilution.



IHC result Immunohistochemical staining of formalin fixed and paraffin embedded human breast cancer tissue sections using Anti-CK18 Rabbit Monoclonal Antibody (Clone RM279) at a 1:4000 dilution.

3 Publications Citing This Product

1. PubMed ID: 10.1111/j.1478-3231.2008.01855.x, Mesenchymal stem cells from human umbilical cords ameliorate mouse hepatic injury in vivo
2. PubMed ID: 33069797, Shi R,Liu L,Wang F,He Y,Niu Y,Wang C,Zhang X,Zhang X,Zhang H,Chen M,Wang Y.Downregulation of cytokeratin 18 induces cellular partial EMT and stemness through increasing EpCAM expression in breast cancer.Cell Signal.2020 Dec;76:109810.doi:10.1016/j.cellsig
3. PubMed ID: 26664408, The Paracrine Effect of Transplanted Human Amniotic Epithelial Cells on Ovarian Function Improvement in a Mouse Model of Chemotherapy-Induced Primary Ovarian Insufficiency

Visit bosterbio.com/anti-ck18-cytokeratin-18-rabbit-monoclonal-antibody-clone-rm279-m01357-3-boster.html to see all 3 publications.

Submit a product review to Biocompare.com

Submit a review of this product to Biocompare.com to receive a \$20 Amazon.com giftcard! Your reviews help your fellow scientists make the right decisions. Thank you for your contribution.



Anti-CK18 (Cytokeratin-18) KRT18 Rabbit Monoclonal Antibody, Clone#RM279

For Research Use Only. Not for use in diagnostic procedures.