

## Anti-Cathepsin D CTSD Rabbit Monoclonal Antibody

Catalog Number: M01361

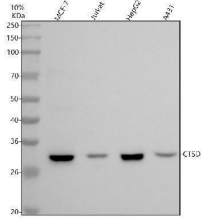
### Overview

Product Name	Anti-Cathepsin D CTSD Rabbit Monoclonal Antibody
Reactive Species	Human, Mouse, Rat
Description	Boster Bio Anti-Cathepsin D CTSD Rabbit Monoclonal Antibody catalog # M01361. Tested in WB, IHC, ICC/IF, IP, Flow Cytometry applications. This antibody reacts with Human, Mouse, Rat.
Application	Flow Cytometry, IP, IF, IHC, ICC, WB
Clonality	Monoclonal CEF-3
Formulation	Rabbit IgG in stabilizing components, phosphate buffered saline, pH 7.4, 150mM NaCl, 0.02% sodium azide and 50% glycerol. *This antibody is supplied in a stabilized formulation. Compatibility with conjugation reactions depends on the chemistry of the conjugation method used. For conjugation methods that are not compatible with the stabilizing components present in this formulation, a carrier-free antibody format is required.
Storage Instructions	Store at -20°C for one year. For short term storage and frequent use, store at 4°C for up to one month. Avoid repeated freeze-thaw cycles.
Host	Rabbit
Uniprot ID	P07339

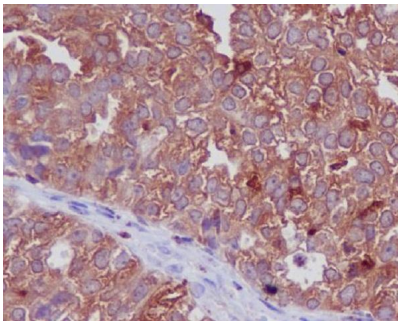
### Technical Details

Immunogen	A synthesized peptide derived from human Cathepsin D
Isotype	Rabbit IgG
Form	Liquid
Concentration	0.5mg/ml
Purification	Affinity-chromatography
Suggested Dilutions	WB 1:500-2000 IHC 1:50-200 ICC/IF 1:50-200 IP 1:50 FC 1:20

## Anti-Cathepsin D CTSD Rabbit Monoclonal Antibody (M01361) Images



Western blot analysis of Cathepsin D/CTSD using anti-Cathepsin D/CTSD antibody (M01361). Electrophoresis was performed on a 5-20% SDS-PAGE gel at 70V (Stacking gel) / 90V (Resolving gel) for 2-3 hours. The sample well of each lane was loaded with 30 ug of sample under reducing conditions. Lane 1: human MCF-7 whole cell lysates, Lane 2: human Jurkat whole cell lysates, Lane 3: human HepG2 whole cell lysates, Lane 4: human A431 whole cell lysates. After electrophoresis, proteins were transferred to a nitrocellulose membrane at 150 mA for 50-90 minutes. Blocked the membrane with 5% non-fat milk/TBS for 1.5 hour at RT. The membrane was incubated with rabbit anti-Cathepsin D/CTSD antigen affinity purified monoclonal antibody (M01361) at 1:500 overnight at 4°C, then washed with TBS-0.1% Tween 3 times with 5 minutes each and probed with a goat anti-rabbit IgG-HRP secondary antibody at a dilution of 1:5000 for 1.5 hour at RT. The signal is developed using an Enhanced Chemiluminescent detection (ECL) kit (Catalog # EK1002) with Tanon 5200 system. A specific band was detected for Cathepsin D/CTSD at approximately 28 kDa. The expected band size for Cathepsin D/CTSD is at 45 kDa.



Immunohistochemical analysis of paraffin-embedded human ovarian cancer, using Cathepsin D Antibody.

## 1 Publications Citing This Product

1. PubMed ID: 33203874, Ma WQ, Sun XJ, Zhu Y, Liu NF. PDK4 promotes vascular calcification by interfering with autophagic activity and metabolic reprogramming. Cell Death Dis. 2020 Nov 17; 11(11):991. doi:10.1038/s41419-020-03162-w. PMID:33203874; PMCID:PMC7673024.

Visit [bosterbio.com/anti-cathepsin-d-rabbit-monoclonal-antibody-m01361-boster.html](https://bosterbio.com/anti-cathepsin-d-rabbit-monoclonal-antibody-m01361-boster.html) to see all 1 publications.

## Submit a product review to Biocompare.com

Submit a review of this product to Biocompare.com to receive a \$20 Amazon.com giftcard! Your reviews help your fellow scientists make the right decisions. Thank you for your contribution.



Anti-Cathepsin D CTSD Rabbit Monoclonal Antibody

For Research Use Only. Not for use in diagnostic procedures.