

Anti-ID3 Mouse Monoclonal Antibody [Clone ID: OTI5C7]

Catalog Number: M01379

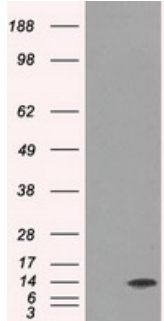
Overview

Product Name	Anti-ID3 Mouse Monoclonal Antibody [Clone ID: OTI5C7]
Reactive Species	Human, Mouse, Rat
Description	Boster Bio ID3 mouse monoclonal antibody, clone OTI5C7 (formerly 5C7). Catalog# M01379. Tested in FC, IF, IHC, WB. This antibody reacts with Human, Mouse, Rat.
Application	Flow Cytometry, IF, IHC, WB
Clonality	Monoclonal OTI5C7
Formulation	PBS (pH 7.3) containing 1% stabilizing protein, 50% glycerol and 0.02% sodium azide. This antibody is supplied in a stabilized formulation. Compatibility with conjugation reactions depends on the chemistry of the conjugation method used. For conjugation methods that are not compatible with the stabilizing components present in this formulation, a carrier-free antibody format is required.
Storage Instructions	Store at -20°C as received.
Host	Mouse
Uniprot ID	Q02535

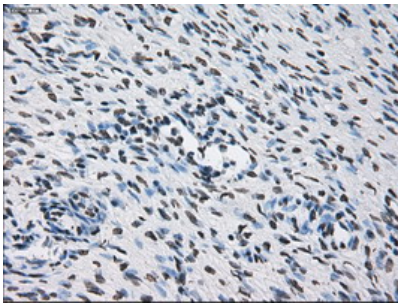
Technical Details

Immunogen	Full length human recombinant protein of human ID3 (NP_002158) produced in HEK293T cell.
Isotype	IgG2a
Concentration	0.83 mg/ml
Purification	Purified from mouse ascites fluids or tissue culture supernatant by affinity chromatography (protein A/G)
Suggested Dilutions	WB 1:500 IHC 1:50 IF 1:100 Flow Cytometry 1:100

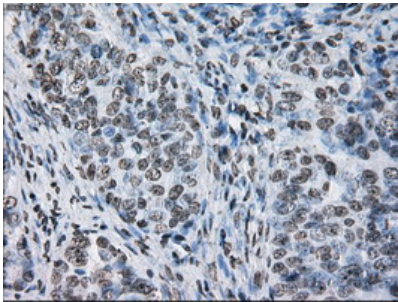
Anti-ID3 Mouse Monoclonal Antibody [Clone ID: OTI5C7] (M01379) Images



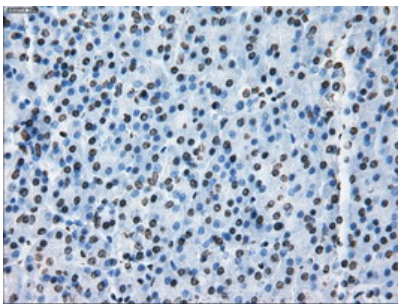
HEK293T cells were transfected with the pCMV6-ENTRY control (Left lane) or pCMV6-ENTRY ID3 (Right lane) cDNA for 48 hrs and lysed. Equivalent amounts of cell lysates (5 ug per lane) were separated by SDS-PAGE and immunoblotted with anti-ID3.



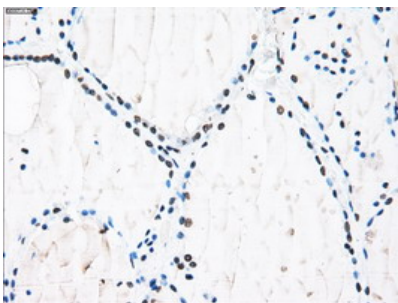
Immunohistochemical staining of paraffin-embedded Human Ovary tissue within the normal limits using anti-ID3 mouse monoclonal antibody. (Heat-induced epitope retrieval by 10mM citric buffer)



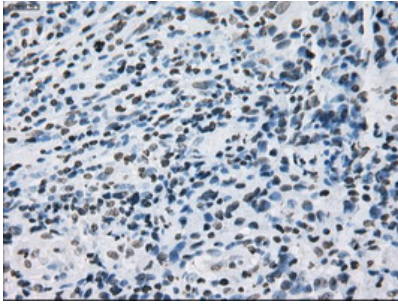
Immunohistochemical staining of paraffin-embedded Adenocarcinoma of Human ovary tissue using anti-ID3 mouse monoclonal antibody. (Heat-induced epitope retrieval by 10mM citric buffer)



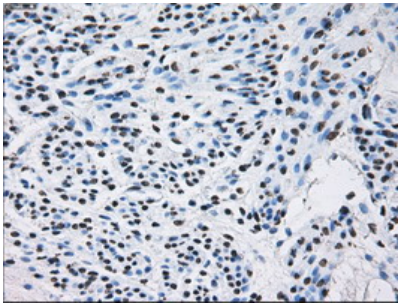
Immunohistochemical staining of paraffin-embedded Human pancreas tissue within the normal limits using anti-ID3 mouse monoclonal antibody. (Heat-induced epitope retrieval by 10mM citric buffer)



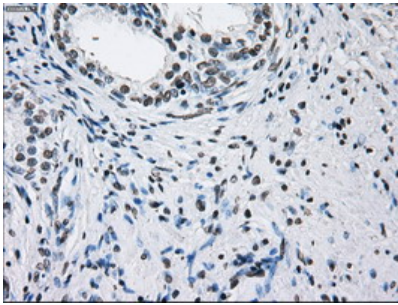
Immunohistochemical staining of paraffin-embedded Human thyroid tissue within the normal limits using anti-ID3 mouse monoclonal antibody. (Heat-induced epitope retrieval by 10mM citric buffer)



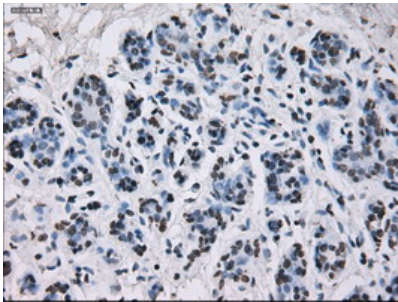
Immunohistochemical staining of paraffin-embedded Carcinoma of Human thyroid tissue using anti-ID3 mouse monoclonal antibody. (Heat-induced epitope retrieval by 10mM citric buffer)



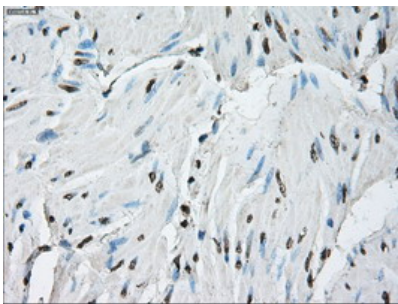
Immunohistochemical staining of paraffin-embedded Human endometrium tissue within the normal limits using anti-ID3 mouse monoclonal antibody. (Heat-induced epitope retrieval by 10mM citric buffer)



Immunohistochemical staining of paraffin-embedded Human prostate tissue within the normal limits using anti-ID3 mouse monoclonal antibody. (Heat-induced epitope retrieval by 10mM citric buffer)

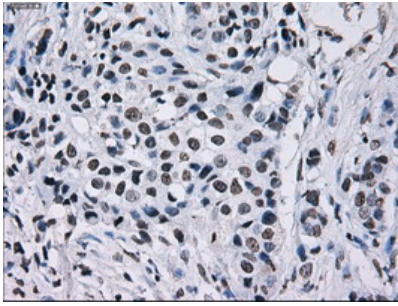


Immunohistochemical staining of paraffin-embedded Human breast tissue within the normal limits using anti-ID3 mouse monoclonal antibody. (Heat-induced epitope retrieval by 10mM citric buffer)

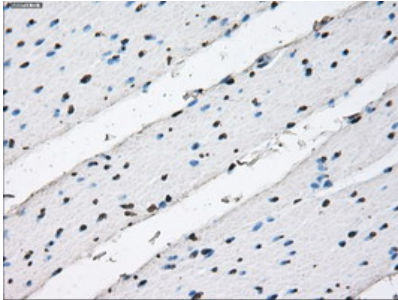


Immunohistochemical staining of paraffin-embedded Human bladder tissue within the normal limits using anti-ID3 mouse monoclonal antibody. (Heat-induced epitope retrieval by 10mM citric buffer)

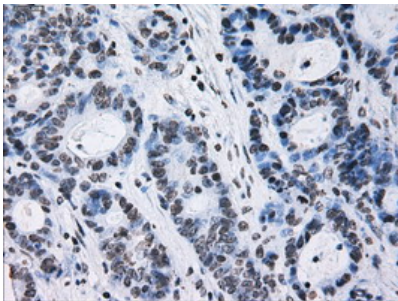
Immunohistochemical staining of paraffin-embedded Adenocarcinoma of Human breast tissue using anti-ID3



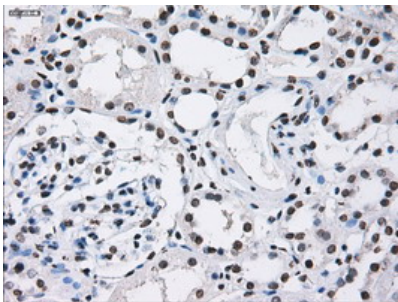
mouse monoclonal antibody. (Heat-induced epitope retrieval by 10mM citric buffer)



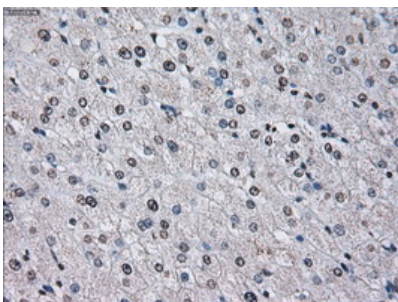
Immunohistochemical staining of paraffin-embedded Human colon tissue within the normal limits using anti-ID3 mouse monoclonal antibody. (Heat-induced epitope retrieval by 10mM citric buffer)



Immunohistochemical staining of paraffin-embedded Adenocarcinoma of Human colon tissue using anti-ID3 mouse monoclonal antibody. (Heat-induced epitope retrieval by 10mM citric buffer)

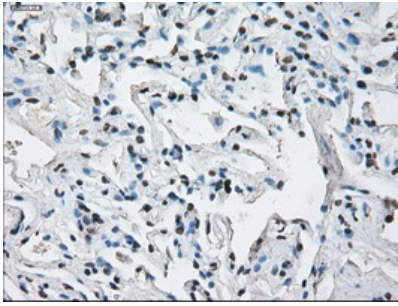


Immunohistochemical staining of paraffin-embedded Human Kidney tissue within the normal limits using anti-ID3 mouse monoclonal antibody. (Heat-induced epitope retrieval by 10mM citric buffer)

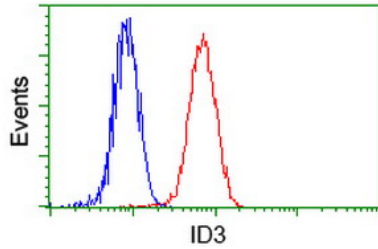


Immunohistochemical staining of paraffin-embedded Human liver tissue within the normal limits using anti-ID3 mouse monoclonal antibody. (Heat-induced epitope retrieval by 10mM citric buffer)

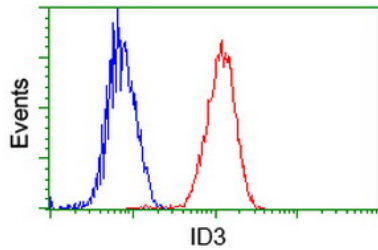
Immunohistochemical staining of paraffin-embedded Human lung tissue within the normal limits using anti-ID3 mouse monoclonal antibody. (Heat-induced epitope retrieval by



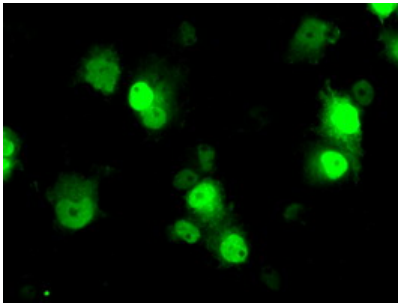
10mM citric buffer



Flow cytometric Analysis of HeLa cells



Flow cytometric Analysis of Jurkat cells



Anti-ID3 mouse monoclonal antibody (M01379)
immunofluorescent staining of COS7 cells transiently
transfected by pCMV6-ENTRY ID3.

Submit a product review to Biocompare.com

Submit a review of this product to Biocompare.com to receive a \$20 Amazon.com giftcard! Your reviews help your fellow scientists make the right decisions. Thank you for your contribution.



Anti-ID3 Mouse Monoclonal Antibody [Clone ID: OT15C7]

For Research Use Only. Not for use in diagnostic procedures.