

Anti-Torsin A TOR1A Rabbit Monoclonal Antibody

Catalog Number: M01381

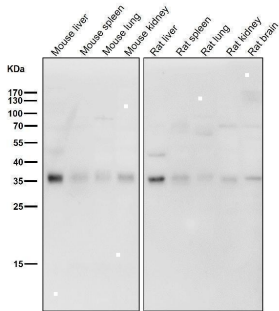
Overview

| | |
|----------------------|--|
| Product Name | Anti-Torsin A TOR1A Rabbit Monoclonal Antibody |
| Reactive Species | Human |
| Description | Boster Bio Anti-Torsin A TOR1A Rabbit Monoclonal Antibody catalog # M01381. Tested in WB, Flow Cytometry applications. This antibody reacts with Human. |
| Application | Flow Cytometry, WB |
| Clonality | Monoclonal BAH-20 |
| Formulation | Rabbit IgG in stabilizing components, phosphate buffered saline, pH 7.4, 150mM NaCl, 0.02% sodium azide and 50% glycerol. *This antibody is supplied in a stabilized formulation. Compatibility with conjugation reactions depends on the chemistry of the conjugation method used. For conjugation methods that are not compatible with the stabilizing components present in this formulation, a carrier-free antibody format is required. |
| Storage Instructions | Store at -20°C for one year. For short term storage and frequent use, store at 4°C for up to one month. Avoid repeated freeze-thaw cycles. |
| Host | Rabbit |
| Uniprot ID | O14656 |

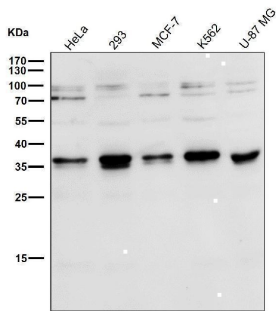
Technical Details

| | |
|---------------------|---|
| Immunogen | A synthesized peptide derived from human Torsin A |
| Isotype | Rabbit IgG |
| Form | Liquid |
| Concentration | 0.5mg/ml |
| Purification | Affinity-chromatography |
| Suggested Dilutions | WB 1:500-2000 FC 1:20 |

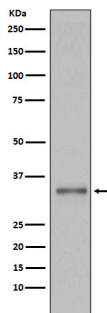
Anti-Torsin A TOR1A Rabbit Monoclonal Antibody (M01381) Images



All lanes use the Antibody at 1:1K dilution for 1 hour at room temperature.



All lanes use the Antibody at 1:1K dilution for 1 hour at room temperature.



Western blot analysis of Torsin A expression in 293T cell lysate.

Submit a product review to [Biocompare.com](https://www.biocompare.com)

Submit a review of this product to [Biocompare.com](https://www.biocompare.com) to receive a \$20 Amazon.com giftcard! Your reviews help your fellow scientists make the right decisions. Thank you for your contribution.



Anti-Torsin A TOR1A Rabbit Monoclonal Antibody

For Research Use Only. Not for use in diagnostic procedures.