

## Anti-SPHK1 Mouse Monoclonal Antibody [Clone ID: OT11A6]

Catalog Number: M01390-1

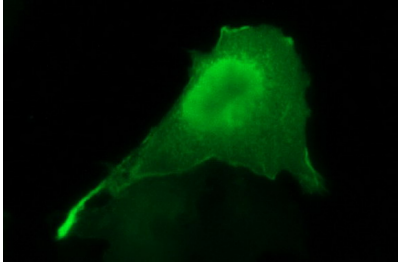
### Overview

Product Name	Anti-SPHK1 Mouse Monoclonal Antibody [Clone ID: OT11A6]
Reactive Species	Human
Description	Boster Bio SPHK1 mouse monoclonal antibody, clone OT11A6 (formerly 1A6). Catalog# M01390-1. Tested in IF, IHC, WB. This antibody reacts with Human.
Conjugate	Unconjugated
Application	IF, IHC, WB
Clonality	Monoclonal OT11A6
Formulation	PBS (pH 7.3) containing 1% stabilizing protein, 50% glycerol and 0.02% sodium azide. This antibody is supplied in a stabilized formulation. Compatibility with conjugation reactions depends on the chemistry of the conjugation method used. For conjugation methods that are not compatible with the stabilizing components present in this formulation, a carrier-free antibody format is required.
Storage Instructions	Store at -20°C for one year. For short term storage and frequent use, store at 4°C for up to one month. Avoid repeated freeze-thaw cycles.
Host	Mouse
Uniprot ID	Q9NYA1

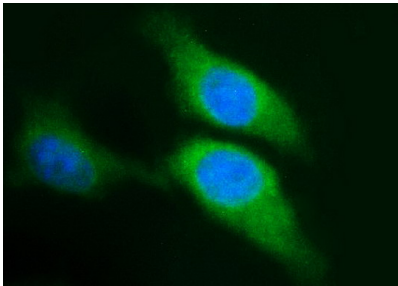
### Technical Details

Immunogen	Full length human recombinant protein of human SPHK1 (NP_068807) produced in HEK293T cell.
Isotype	IgG2a
Concentration	1 mg/ml
Purification	Purified from mouse ascites fluids or tissue culture supernatant by affinity chromatography (protein A/G)
Suggested Dilutions	WB: 1:400~4000 IHC: 1:150 IF: 1:100

## Anti-SPHK1 Mouse Monoclonal Antibody [Clone ID: OTI1A6] (M01390-1) Images



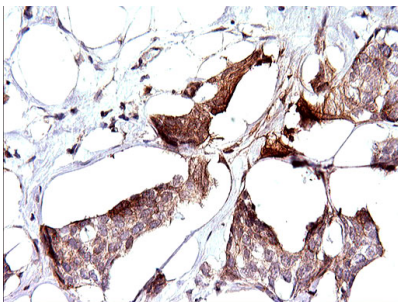
Anti-SPHK1 mouse monoclonal antibody (M01390-1) immunofluorescent staining of COS7 cells transiently transfected by pCMV6-ENTRY SPHK1.



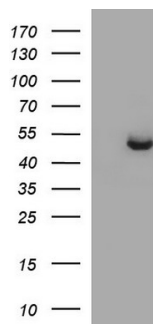
Immunofluorescent staining of HeLa cells using anti-SPHK1 mouse monoclonal antibody (M01390-1).



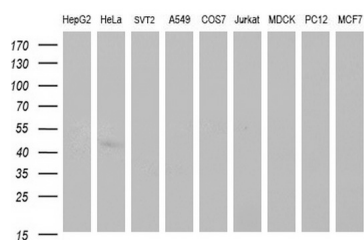
Immunohistochemical staining of paraffin-embedded Human endometrium tissue within the normal limits using anti-SPHK1 mouse monoclonal antibody. (Heat-induced epitope retrieval by 1 mM EDTA in 10mM Tris)



Immunohistochemical staining of paraffin-embedded Adenocarcinoma of Human breast tissue using anti-SPHK1 mouse monoclonal antibody. (Heat-induced epitope retrieval by 1 mM EDTA in 10mM Tris)



HEK293T cells were transfected with the pCMV6-ENTRY control (Left lane) or pCMV6-ENTRY SPHK1 (Right lane) cDNA for 48 hrs and lysed. Equivalent amounts of cell lysates (5 ug per lane) were separated by SDS-PAGE and immunoblotted with anti-SPHK1.



Western blot analysis of extracts (35ug) from 9 different cell lines by using anti-SPHK1 monoclonal antibody (HepG2: human; HeLa: human; SVT2: mouse; A549: human; COS7: monkey; Jurkat: human; MDCK: canine; PC12: rat; MCF7: human).

## Submit a product review to Biocompare.com

Submit a review of this product to Biocompare.com to receive a \$20 Amazon.com giftcard! Your reviews help your fellow scientists make the right decisions. Thank you for your contribution.



Anti-SPHK1 Mouse Monoclonal Antibody [Clone ID: OT11A6]

For Research Use Only. Not for use in diagnostic procedures.