

Anti-Estrogen Inducible Protein pS2 Monoclonal Antibody

Catalog Number: M01391-1

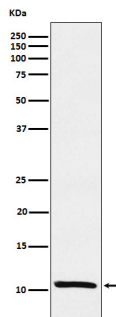
Overview

Product Name	Anti-Estrogen Inducible Protein pS2 Monoclonal Antibody
Reactive Species	Human
Description	Boster Bio Anti-Estrogen Inducible Protein pS2 Monoclonal Antibody catalog # M01391-1. Tested in WB, IHC, ICC/IF, IP, Flow Cytometry applications. This antibody reacts with Human.
Application	Flow Cytometry, IP, IF, IHC, ICC, WB
Clonality	Monoclonal ADIB-20
Formulation	Rabbit IgG in stabilizing components, phosphate buffered saline, pH 7.4, 150mM NaCl, 0.02% sodium azide and 50% glycerol. *This antibody is supplied in a stabilized formulation. Compatibility with conjugation reactions depends on the chemistry of the conjugation method used. For conjugation methods that are not compatible with the stabilizing components present in this formulation, a carrier-free antibody format is required.
Storage Instructions	Store at -20°C for one year. For short term storage and frequent use, store at 4°C for up to one month. Avoid repeated freeze-thaw cycles.
Host	Rabbit
Uniprot ID	P04155

Technical Details

Immunogen	A synthesized peptide derived from human Estrogen Inducible Protein pS2 Stabilizer of the mucous gel overlying the gastrointestinal mucosa that provides a physical barrier against various noxious agents. May inhibit the growth of calcium oxalate crystals in urine.
Isotype	Rabbit IgG
Form	Liquid
Concentration	0.5mg/ml
Purification	Affinity-chromatography
Suggested Dilutions	WB 1:500-1:2000 IHC 1:50-1:200 ICC/IF 1:50-1:200 IP 1:50 FC 1:50

Anti-Estrogen Inducible Protein pS2 Monoclonal Antibody (M01391-1) Images



Western blot analysis of Estrogen Inducible Protein pS2 expression in MCF-7 cell lysate.

Submit a product review to Biocompare.com

Submit a review of this product to Biocompare.com to receive a \$20 Amazon.com giftcard! Your reviews help your fellow scientists make the right decisions. Thank you for your contribution.



Anti-Estrogen Inducible Protein pS2 Monoclonal Antibody

For Research Use Only. Not for use in diagnostic procedures.