

Anti-ALDH1A1 Rabbit Monoclonal Antibody

Catalog Number: M01392-1

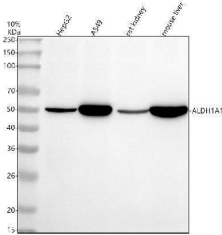
Overview

Product Name	Anti-ALDH1A1 Rabbit Monoclonal Antibody
Reactive Species	Human, Mouse, Rat
Description	Boster Bio Anti-ALDH1A1 Rabbit Monoclonal Antibody catalog # M01392-1. Tested in WB, IHC, ICC/IF, Flow Cytometry, IP applications. This antibody reacts with Human, Mouse, Rat.
Application	Flow Cytometry, IP, IF, IHC, ICC, WB
Clonality	Monoclonal AHA-1
Formulation	Rabbit IgG in stabilizing components, phosphate buffered saline, pH 7.4, 150mM NaCl, 0.02% sodium azide and 50% glycerol. *This antibody is supplied in a stabilized formulation. Compatibility with conjugation reactions depends on the chemistry of the conjugation method used. For conjugation methods that are not compatible with the stabilizing components present in this formulation, a carrier-free antibody format is required.
Storage Instructions	Store at -20°C for one year. For short term storage and frequent use, store at 4°C for up to one month. Avoid repeated freeze-thaw cycles.
Host	Rabbit
Uniprot ID	P00352

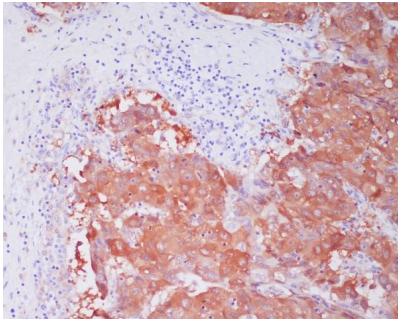
Technical Details

Immunogen	A synthesized peptide derived from human ALDH1A1
Isotype	Rabbit IgG
Form	Liquid
Concentration	0.5mg/ml
Purification	Affinity-chromatography
Suggested Dilutions	WB 1:500-2000 IHC 1:50-200 ICC/IF 1:50-200 IP 1:20 FC 1:20

Anti-ALDH1A1 Rabbit Monoclonal Antibody (M01392-1) Images



Western blot analysis of ALDH1A1 using anti-ALDH1A1 antibody (M01392-1). Electrophoresis was performed on a 10% SDS-PAGE gel at 80V (Stacking gel) / 120V (Resolving gel) for 2 hours. The sample well of each lane was loaded with 30 ug of sample under reducing conditions. Lane 1: human HepG2 whole cell lysates, Lane 2: human A549 whole cell lysates, Lane 3: rat kidney tissue lysates, Lane 4: mouse liver tissue lysates. After electrophoresis, proteins were transferred to a nitrocellulose membrane at 150 mA for 50-90 minutes. Blocked the membrane with 5% non-fat milk/TBS for 1.5 hour at RT. The membrane was incubated with rabbit anti-ALDH1A1 antigen affinity purified monoclonal antibody (M01392-1) at 1:500 overnight at 4°C, then washed with TBS-0.1% Tween 3 times with 5 minutes each and probed with a goat anti-rabbit IgG-HRP secondary antibody at a dilution of 1:5000 for 1.5 hour at RT. The signal is developed using an ECL Plus Western Blotting Substrate (Catalog # AR1196-200) with Tanon 5200 system. A specific band was detected for ALDH1A1 at approximately 50 kDa. The expected band size for ALDH1A1 is at 55 kDa.



Immunohistochemical analysis of paraffin-embedded human liver cancer, using ALDH1A1 Antibody.

1 Publications Citing This Product

1. PubMed ID: 31935835, Li Y, Chen F, Chen J, Chan S, He Y, Liu W, Zhang G. Disulfiram/Copper Induces Antitumor Activity against Both Nasopharyngeal Cancer Cells and Cancer-Associated Fibroblasts through ROS/MAPK and Ferroptosis Pathways. *Cancers (Basel)*. 2020 Jan 6;12(1):138. doi:10.3390

Visit [bosterbio.com/anti-aldh1a1-rabbit-monoclonal-antibody-m01392-1-boster.html](https://www.bosterbio.com/anti-aldh1a1-rabbit-monoclonal-antibody-m01392-1-boster.html) to see all 1 publications.

Submit a product review to Biocompare.com

Submit a review of this product to Biocompare.com to receive a \$20 Amazon.com giftcard! Your reviews help your fellow scientists make the right decisions. Thank you for your contribution.



Anti-ALDH1A1 Rabbit Monoclonal Antibody

For Research Use Only. Not for use in diagnostic procedures.