

Anti-RALBP1 Mouse Monoclonal Antibody [Clone ID: OTI11B2]

Catalog Number: M01403-3

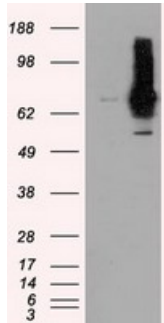
Overview

Product Name	Anti-RALBP1 Mouse Monoclonal Antibody [Clone ID: OTI11B2]
Reactive Species	Dog, Human, Mouse, Rat
Description	Boster Bio Anti-RALBP1 (RIP1) mouse monoclonal antibody, clone OTI11B2 (formerly 11B2). Catalog# M01403-3. Tested in FC, IF, IP, WB. This antibody reacts with Human, Mouse, Rat, Dog.
Application	Flow Cytometry, IP, IF, WB
Clonality	Monoclonal OTI11B2
Formulation	PBS (pH 7.3) containing 1% stabilizing protein, 50% glycerol and 0.02% sodium azide. This antibody is supplied in a stabilized formulation. Compatibility with conjugation reactions depends on the chemistry of the conjugation method used. For conjugation methods that are not compatible with the stabilizing components present in this formulation, a carrier-free antibody format is required.
Storage Instructions	Store at -20°C as received.
Host	Mouse
Uniprot ID	Q15311

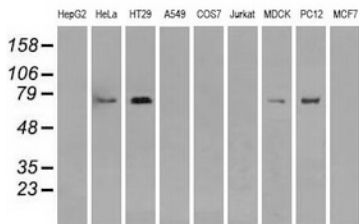
Technical Details

Immunogen	Full length human recombinant protein of human RALBP1 (NP_006779) produced in HEK293T cell.
Isotype	IgG1
Concentration	0.84 mg/ml
Purification	Purified from mouse ascites fluids or tissue culture supernatant by affinity chromatography (protein A/G)
Suggested Dilutions	WB 1:2000 IF 1:100 Flow Cytometry 1:100 IP: 4ug/mL

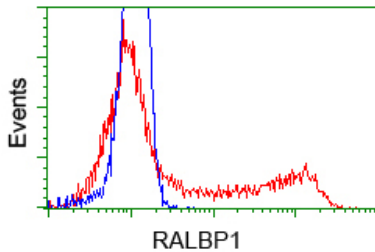
Anti-RALBP1 Mouse Monoclonal Antibody [Clone ID: OTI11B2] (M01403-3) Images



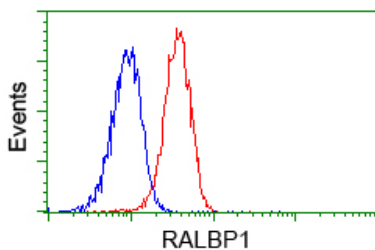
HEK293T cells were transfected with the pCMV6-ENTRY control (Left lane) or pCMV6-ENTRY RALBP1 (Right lane) cDNA for 48 hrs and lysed. Equivalent amounts of cell lysates (5 ug per lane) were separated by SDS-PAGE and immunoblotted with anti-RALBP1.



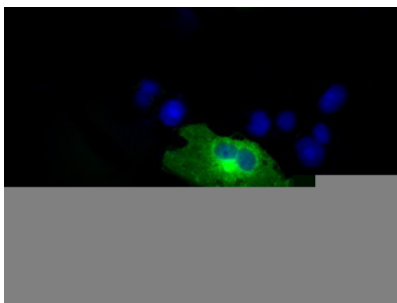
Western blot analysis of extracts (35ug) from 9 different cell lines by using anti-RALBP1 monoclonal antibody.



HEK293T cells transfected with either pCMV6-ENTRY RALBP1 (Red) or empty vector control plasmid (Blue) were immunostained with anti-RALBP1 mouse monoclonal (M01403-3)



Flow cytometric analysis of Jurkat cells



Anti-RALBP1 mouse monoclonal antibody (M01403-3) immunofluorescent staining of COS7 cells transiently transfected by pCMV6-ENTRY RALBP1.

Submit a review of this product to Biocompare.com to receive a \$20 Amazon.com giftcard! Your reviews help your fellow scientists make the right decisions. Thank you for your contribution.



Anti-RALBP1 Mouse Monoclonal Antibody [Clone ID: OTI11B2]

For Research Use Only. Not for use in diagnostic procedures.