

Anti-IVD Mouse Monoclonal Antibody [Clone ID: OTI1B10]

Catalog Number: M01404-1

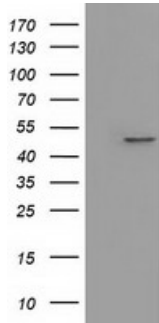
Overview

Product Name	Anti-IVD Mouse Monoclonal Antibody [Clone ID: OTI1B10]
Reactive Species	Dog, Human, Monkey, Mouse, Rat
Description	Boster Bio Anti-IVD mouse monoclonal antibody, clone OTI1B10 (formerly 1B10). Catalog# M01404-1. Tested in IF, IHC, WB. This antibody reacts with Human, Monkey, Mouse, Rat, Dog.
Application	IF, IHC, WB
Clonality	Monoclonal OTI1B10
Formulation	PBS (pH 7.3) containing 1% stabilizing protein, 50% glycerol and 0.02% sodium azide. This antibody is supplied in a stabilized formulation. Compatibility with conjugation reactions depends on the chemistry of the conjugation method used. For conjugation methods that are not compatible with the stabilizing components present in this formulation, a carrier-free antibody format is required.
Storage Instructions	Store at -20°C as received.
Host	Mouse
Uniprot ID	P26440

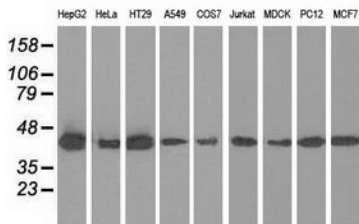
Technical Details

Immunogen	Full length human recombinant protein of human IVD (NP_002612) produced in HEK293T cell.
Isotype	IgG2b
Concentration	1 mg/ml
Purification	Purified from mouse ascites fluids or tissue culture supernatant by affinity chromatography (protein A/G)
Suggested Dilutions	WB 1:500 IHC 1:150 IF 1:100 Flow Cytometry 1:100

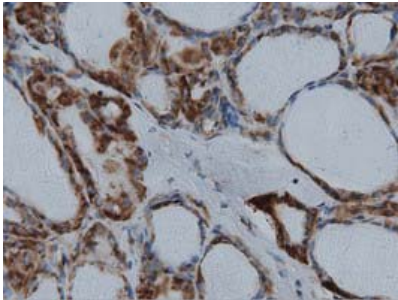
Anti-IVD Mouse Monoclonal Antibody [Clone ID: OTI1B10] (M01404-1) Images



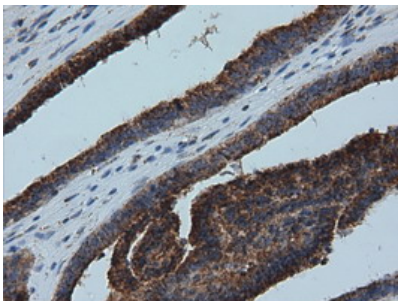
HEK293T cells were transfected with the pCMV6-ENTRY control (Left lane) or pCMV6-ENTRY IVD (Right lane) cDNA for 48 hrs and lysed. Equivalent amounts of cell lysates (5 ug per lane) were separated by SDS-PAGE and immunoblotted with anti-IVD.



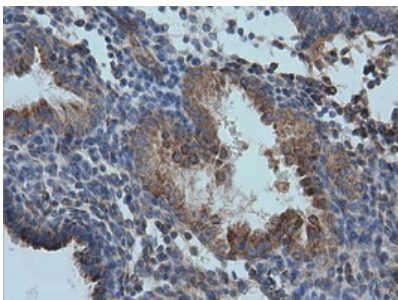
Western blot analysis of extracts (35ug) from 9 different cell lines by using anti-IVD monoclonal antibody.



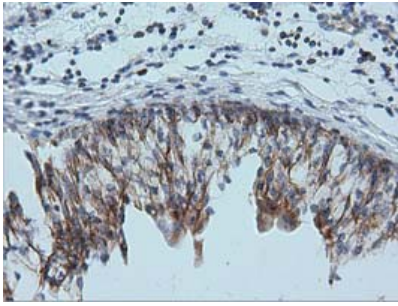
Immunohistochemical staining of paraffin-embedded Carcinoma of Human thyroid tissue using anti-IVD mouse monoclonal antibody (M01404-1) at 1:150 dilution.



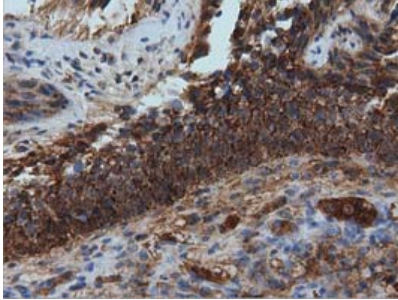
Immunohistochemical staining of paraffin-embedded Adenocarcinoma of Human endometrium tissue using anti-IVD mouse monoclonal antibody (M01404-1) at 1:150 dilution.



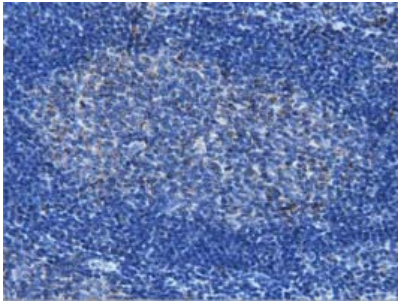
Immunohistochemical staining of paraffin-embedded Carcinoma of Human prostate tissue using anti-IVD mouse monoclonal antibody (M01404-1) at 1:150 dilution.



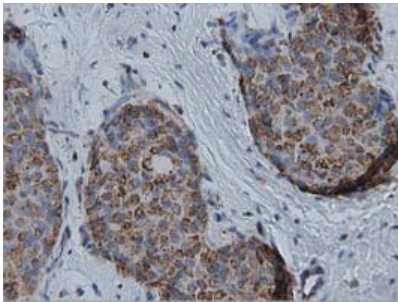
Immunohistochemical staining of paraffin-embedded Human bladder tissue within the normal limits using anti-IVD mouse monoclonal antibody (M01404-1) at 1:150 dilution.



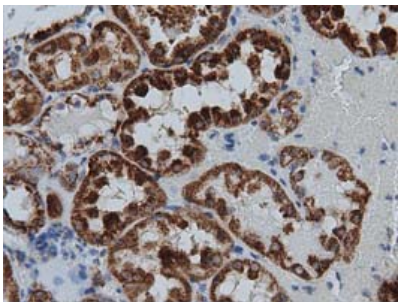
Immunohistochemical staining of paraffin-embedded Carcinoma of Human bladder tissue using anti-IVD mouse monoclonal antibody (M01404-1) at 1:150 dilution.



Immunohistochemical staining of paraffin-embedded Human lymph node tissue within the normal limits using anti-IVD mouse monoclonal antibody. (Heat-induced epitope retrieval by 10mM citric buffer)

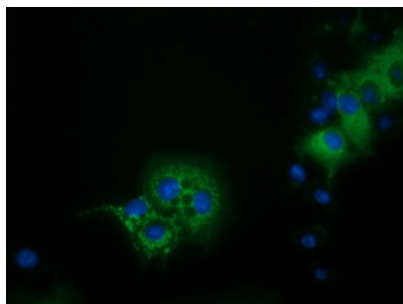
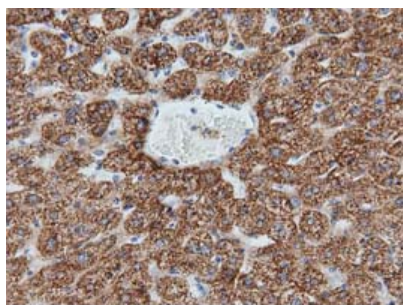


Immunohistochemical staining of paraffin-embedded Adenocarcinoma of Human breast tissue using anti-IVD mouse monoclonal antibody (M01404-1) at 1:150 dilution.



Immunohistochemical staining of paraffin-embedded Human Kidney tissue within the normal limits using anti-IVD mouse monoclonal antibody (M01404-1) at 1:150 dilution.

Immunohistochemical staining of paraffin-embedded Human liver tissue within the normal limits using anti-IVD mouse monoclonal antibody (M01404-1) at 1:150 dilution.



Anti-IVD mouse monoclonal antibody (M01404-1)
immunofluorescent staining of COS7 cells transiently
transfected by pCMV6-ENTRY IVD.

Submit a product review to [Biocompare.com](https://www.biocompare.com)

Submit a review of this product to [Biocompare.com](https://www.biocompare.com) to receive a \$20 Amazon.com giftcard! Your reviews help your fellow scientists make the right decisions. Thank you for your contribution.



Anti-IVD Mouse Monoclonal Antibody [Clone ID: OTI1B10]

For Research Use Only. Not for use in diagnostic procedures.