

Anti-CARD9 Antibody (N-term)

Catalog Number: M01410

About CARD9

Adapter protein that plays a key role in innate immune response to a number of intracellular pathogens, such as *C.albicans* and *L.monocytogenes*. Is at the crossroads of ITAM- tyrosine kinase and the Toll-like receptors (TLR) and NOD2 signaling pathways. Probably controls various innate immune response pathways depending on the intracellular pathogen. In response to *L.monocytogenes* infection, acts by connecting NOD2 recognition of peptidoglycan to downstream activation of MAP kinases (MAPK) without activating NF-kappa-B. Also involved in activation of myeloid cells via classical ITAM-associated receptors and TLR: required for TLR-mediated activation of MAPK, while it is not required for TLR-induced activation of NF-kappa-B (By similarity). Controls CLEC7A (dectin-1)-mediated myeloid cell activation induced by the yeast cell wall component zymosan, leading to cytokine production and innate anti-fungal immunity: acts by regulating BCL10-MALT1-mediated NF-kappa-B activation pathway. Activates NF-kappa-B via BCL10. In response to the hyphal form of *C.albicans*, mediates CLEC6A (dectin-2)-induced I-kappa-B kinase ubiquitination, leading to NF-kappa-B activation via interaction with BCL10. In response to fungal infection, may be required for the development and subsequent differentiation of interleukin 17-producing T helper (TH-17) cells.

Overview

Product Name	Anti-CARD9 Antibody (N-term)
Reactive Species	Human
Description	Boster Bio Anti-CARD9 Antibody (N-term) (Catalog # M01410). Tested in WB application(s). This antibody reacts with Human.
Application	WB
Clonality	Monoclonal 2156CT20.4.85
Formulation	Purified monoclonal antibody supplied in PBS with 0.09% (W/V) sodium azide.
Storage Instructions	Maintain refrigerated at 2-8°C for up to 2 weeks. For long-term storage, store at -20°C in small aliquots to prevent freeze-thaw cycles.
Host	Mouse
Uniprot ID	Q9H257

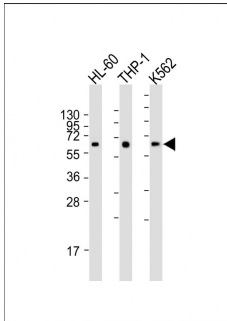
Technical Details

Immunogen	This CARD9 antibody is generated from a mouse immunized with a recombinant protein from human CARD9.
Predicted Reactive Species	Human
Isotype	IgG1,kappa
Purification	This antibody is purified through a protein G column, followed by dialysis against PBS.

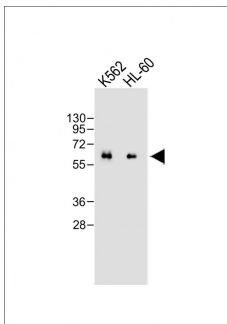
Suggested Dilutions

WB: 1:500

Anti-CARD9 Antibody (N-term) (M01410) Images



All lanes : Anti-CARD9 Antibody (N-term) at dilution
Lane 1: HL-60 whole cell lysate
Lane 2: THP-1 whole cell lysate
Lane 3: K562 whole cell lysate
Lysates/proteins at 20 µg per lane.
Secondary Goat Anti-mouse IgG, (H+L), Peroxidase conjugated at 1/10000 dilution. Predicted band size : 62 kDa
Blocking/Dilution buffer: 5% NFDm/TBST.



All lanes : Anti-CARD9 Antibody (N-term) at dilution
Lane 1: K562 whole cell lysate
Lane 2: HL-60 whole cell lysate
Lysates/proteins at 20 µg per lane. Secondary Goat Anti-mouse IgG, (H+L), Peroxidase conjugated at 1/10000 dilution. Predicted band size : 62 kDa
Blocking/Dilution buffer: 5% NFDm/TBST.

Submit a product review to [Biocompare.com](https://www.biocompare.com)

Submit a review of this product to [Biocompare.com](https://www.biocompare.com) to receive a \$20 Amazon.com giftcard! Your reviews help your fellow scientists make the right decisions. Thank you for your contribution.



Anti-CARD9 Antibody (N-term)

For Research Use Only. Not for use in diagnostic procedures.