

Anti-CK8 (Cytokeratin-8) KRT8 Rabbit Monoclonal Antibody, Clone#RM266

Catalog Number: M01421-4

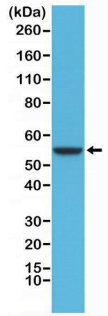
Overview

Product Name	Anti-CK8 (Cytokeratin-8) KRT8 Rabbit Monoclonal Antibody, Clone#RM266
Reactive Species	Human
Description	Boster Bio Anti-CK8 (Cytokeratin-8) KRT8 Rabbit Monoclonal Antibody, Clone#RM266 (Catalog # M01421-4). Tested in IHC, WB applications. This antibody reacts with Human.
Application	IHC, WB
Clonality	Monoclonal RM266
Formulation	50% Glycerol/PBS with 1% stabilizing protein and 0.09% sodium azide This antibody is supplied in a stabilized formulation. Compatibility with conjugation reactions depends on the chemistry of the conjugation method used. For conjugation methods that are not compatible with the stabilizing components present in this formulation, a carrier-free antibody format is required.
Storage Instructions	Store at -20°C for one year. Avoid repeated freeze-thaw cycles.
Host	Rabbit
Uniprot ID	P05787

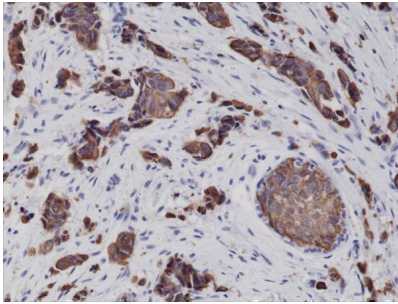
Technical Details

Immunogen	A peptide corresponding to the C-terminus of human Cytokeratin-8.
Cross Reactivity	This antibody reacts to human CK8 (Cytokeratin-8).
Isotype	Rabbit IgG
Form	Liquid
Concentration	0.5-1mg/ml, actual concentration vary by lot. Use suggested dilution ratio to decide dilution procedure.
Purification	Protein A affinity purified from an animal origin-free culture supernatant
Suggested Dilutions	Immunohistochemistry (IHC): 1:1000-1:2000 dilution WB: 1:1000-1:2000 dilution.

Anti-CK8 (Cytokeratin-8) KRT8 Rabbit Monoclonal Antibody, Clone#RM266 (M01421-4) Images



Western Blotting result Western Blot of HeLa cells lysates using Anti-CK-8 Rabbit Monoclonal Antibody (Clone RM266) at a 1:1000 dilution.



IHC result Immunohistochemical staining of formalin fixed and paraffin embedded human breast cancer tissue sections using Anti-CK-8 Rabbit Monoclonal Antibody (Clone RM266) at a 1:2000 dilution.

Submit a product review to Biocompare.com

Submit a review of this product to Biocompare.com to receive a \$20 Amazon.com giftcard! Your reviews help your fellow scientists make the right decisions. Thank you for your contribution.



Anti-CK8 (Cytokeratin-8) KRT8 Rabbit Monoclonal Antibody, Clone#RM266

For Research Use Only. Not for use in diagnostic procedures.