

Anti-Smad5 Rabbit Monoclonal Antibody

Catalog Number: M01423

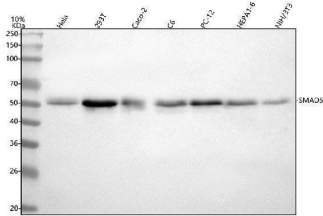
Overview

Product Name	Anti-Smad5 Rabbit Monoclonal Antibody
Reactive Species	Human, Mouse, Rat
Description	Boster Bio Anti-Smad5 Rabbit Monoclonal Antibody catalog # M01423. Tested in WB, IHC, ICC/IF, Flow Cytometry applications. This antibody reacts with Human, Mouse, Rat.
Application	Flow Cytometry, IF, IHC, ICC, WB
Clonality	Monoclonal BDB-19
Formulation	Rabbit IgG in stabilizing components, phosphate buffered saline, pH 7.4, 150mM NaCl, 0.02% sodium azide and 50% glycerol. *This antibody is supplied in a stabilized formulation. Compatibility with conjugation reactions depends on the chemistry of the conjugation method used. For conjugation methods that are not compatible with the stabilizing components present in this formulation, a carrier-free antibody format is required.
Storage Instructions	Store at -20°C for one year. For short term storage and frequent use, store at 4°C for up to one month. Avoid repeated freeze-thaw cycles.
Host	Rabbit
Uniprot ID	Q99717

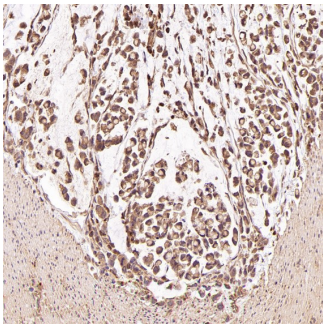
Technical Details

Immunogen	A synthesized peptide derived from human Smad5
Isotype	Rabbit IgG
Form	Liquid
Concentration	0.5mg/ml
Purification	Affinity-chromatography
Suggested Dilutions	WB 1:500-2000 IHC 1:50-200 ICC/IF 1:50-200 FC 1:50

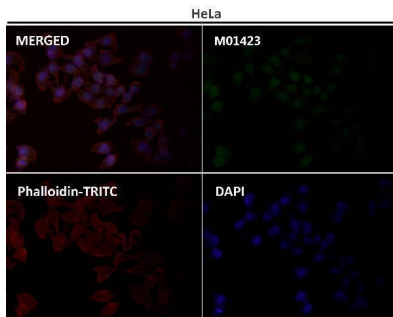
Anti-Smad5 Rabbit Monoclonal Antibody (M01423) Images



Western blot analysis of Smad5 using anti-Smad5 antibody (M01423). Electrophoresis was performed on a 5-20% SDS-PAGE gel at 70V (Stacking gel) / 90V (Resolving gel) for 2-3 hours. The sample well of each lane was loaded with 30 ug of sample under reducing conditions. Lane 1: human HeLa whole cell lysates, Lane 2: human 293T whole cell lysates, Lane 3: human Caco-2 whole cell lysates, Lane 4: rat C6 whole cell lysates, Lane 5: rat PC-12 whole cell lysates, Lane 7: mouse Hepa1-6 whole cell lysates, Lane 8: mouse NIH/3T3 whole cell lysates. After electrophoresis, proteins were transferred to a nitrocellulose membrane at 150 mA for 50-90 minutes. Blocked the membrane with 5% non-fat milk/TBS for 1.5 hour at RT. The membrane was incubated with rabbit anti-Smad5 antigen affinity purified monoclonal antibody (Catalog # M01423) at 1:500 overnight at 4°C, then washed with TBS-0.1%Tween 3 times with 5 minutes each and probed with a goat anti-rabbit IgG-HRP secondary antibody at a dilution of 1:500 for 1.5 hour at RT. The signal is developed using an Enhanced Chemiluminescent detection (ECL) kit (Catalog # EK1002) with Tanon 5200 system. A specific band was detected for Smad5 at approximately 52 kDa. The expected band size for Smad5 is at 52 kDa.

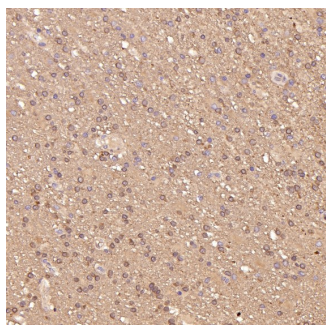
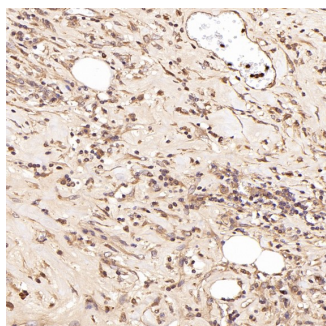


Immunohistochemical analysis of paraffin-embedded Human stomach cancer, using the Antibody at 1:50 dilution.



Immunofluorescent analysis using the Antibody at 1:50 dilution.

Immunohistochemical analysis of paraffin-embedded Human Hodgkin's Lymphoma, using the Antibody at 1:50 dilution.



Immunohistochemical analysis of paraffin-embedded Human glioblastoma, using the Antibody at 1:50 dilution.

Submit a product review to [Biocompare.com](https://www.biocompare.com)

Submit a review of this product to [Biocompare.com](https://www.biocompare.com) to receive a \$20 Amazon.com giftcard! Your reviews help your fellow scientists make the right decisions. Thank you for your contribution.



Anti-Smad5 Rabbit Monoclonal Antibody

For Research Use Only. Not for use in diagnostic procedures.