

Anti-IL6R Mouse Monoclonal Antibody [Clone ID: OTI2F4]

Catalog Number: M01425

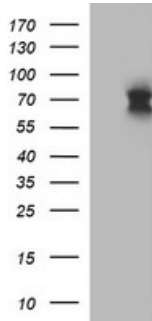
Overview

Product Name	Anti-IL6R Mouse Monoclonal Antibody [Clone ID: OTI2F4]
Reactive Species	Human
Description	Boster Bio IL6R mouse monoclonal antibody, clone OTI2F4 (formerly 2F4). Catalog# M01425. Tested in IF, IHC, WB. This antibody reacts with Human.
Application	IF, IHC, WB
Clonality	Monoclonal OTI2F4
Formulation	PBS (pH 7.3) containing 1% stabilizing protein, 50% glycerol and 0.02% sodium azide. This antibody is supplied in a stabilized formulation. Compatibility with conjugation reactions depends on the chemistry of the conjugation method used. For conjugation methods that are not compatible with the stabilizing components present in this formulation, a carrier-free antibody format is required.
Storage Instructions	Store at -20°C as received.
Host	Mouse
Uniprot ID	P08887

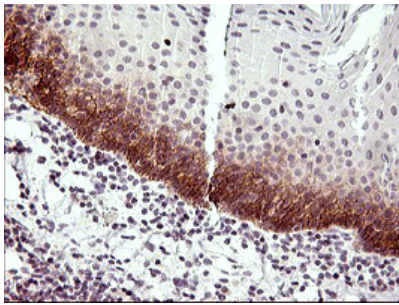
Technical Details

Immunogen	Full length human recombinant protein of human IL6R (NP_000556) produced in HEK293T cell.
Isotype	IgG1
Concentration	1 mg/ml
Purification	Purified from mouse ascites fluids or tissue culture supernatant by affinity chromatography (protein A/G)
Suggested Dilutions	WB 1:4000 IHC 1:150 IF 1:100

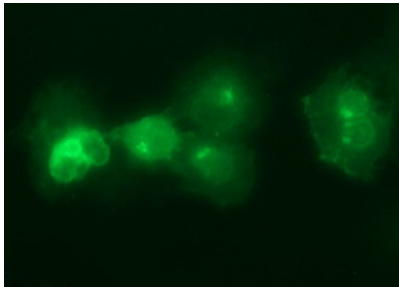
Anti-IL6R Mouse Monoclonal Antibody [Clone ID: OTI2F4] (M01425) Images



HEK293T cells were transfected with the pCMV6-ENTRY control (Left lane) or pCMV6-ENTRY IL6R (Right lane) cDNA for 48 hrs and lysed. Equivalent amounts of cell lysates (5 ug per lane) were separated by SDS-PAGE and immunoblotted with anti-IL6R.



Immunohistochemical staining of paraffin-embedded Human lymph node tissue within the normal limits using anti-IL6R mouse monoclonal antibody. (Heat-induced epitope retrieval by 10mM citric buffer)



Anti-IL6R mouse monoclonal antibody (M01425) immunofluorescent staining of COS7 cells transiently transfected by pCMV6-ENTRY IL6R.

Submit a product review to Biocompare.com

Submit a review of this product to Biocompare.com to receive a \$20 Amazon.com giftcard! Your reviews help your fellow scientists make the right decisions. Thank you for your contribution.



Anti-IL6R Mouse Monoclonal Antibody [Clone ID: OTI2F4]

For Research Use Only. Not for use in diagnostic procedures.