

Anti-Elk1 Monoclonal Antibody

Catalog Number: M01426-1

About ELK1

TRPC6, also known as TRP6, short transient receptor potential channel 6 and transient receptor potential cation channel subfamily C member 6, is thought to form a receptor-activated non-selective calcium permeant cation channel. TRPC6 is probably operated by a phosphatidylinositol second messenger system activated by receptor tyrosine kinases or G-protein coupled receptors. It is activated by diacylglycerol (DAG) in a membrane-delimited fashion, independently of protein kinase C and may not to be activated by intracellular calcium store depletion. Defects in this gene are a cause of focal segmental glomerulosclerosis (FSGS). Expression of this protein has been reported in tissues such as placenta, lung, spleen, ovary, small intestine, and renal podocytes. Immunohistochemistry studies using polyclonal antibodies to this target have shown moderate to strong staining in cell types such as neurons, breast, respiratory, squamous and prostate epithelium, epidermis, placental trophoblasts, dendritic cells, and subsets of immune cells, and faint to moderate staining of adrenal, colon, ganglion cells, hepatocytes, heart, and testis.

Overview

Product Name	Anti-Elk1 Monoclonal Antibody
Reactive Species	Human
Description	Boster Bio Anti-Elk1 Monoclonal Antibody catalog # M01426-1. Tested in ELISA, IHC, WB applications. This antibody reacts with Human.
Application	ELISA, IHC, WB
Clonality	Monoclonal 3H6D12 / 4H9C8 / 4H9F1
Formulation	Ascitic fluid containing 0.03% sodium azide.
Storage Instructions	Store at -20°C for one year. For short term storage and frequent use, store at 4°C for up to one month. Avoid repeated freeze-thaw cycles.
Host	Mouse
Uniprot ID	P19419

Technical Details

Immunogen	Purified recombinant fragment of Elk1 expressed in E. Coli.
Predicted Reactive Species	Chimpanzee
Cross Reactivity	No cross reactivity with other proteins.
Isotype	IgG
Form	Liquid
Concentration	1 mg/ml

Purification	Affinity purification
Suggested Dilutions	<p>Dilute the sample so that the expected range of concentrations fall within the detection range of this kit.</p> <p>If the expected range of concentration is unknown, a pilot test should be conducted to decide the optimal dilution ratio for your samples.</p> <p>Some PubMed article(s) citing the expression level of this target are as follows:</p> <p>Boster Bio's internal QC testing used:</p> <p>WB 1:500-1:2000</p> <p>IHC 1:200-1:1000</p> <p>ELISA 1:10000</p>

Anti-Elk1 Monoclonal Antibody (M01426-1) Images

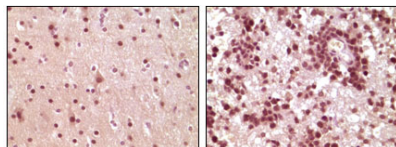


Figure 2. Immunohistochemistry validation of ELK1 using Anti-Elk1 Monoclonal Antibody (M01426-1).

Immunohistochemistry (IHC) analysis of paraffin-embedded Human Brain tumor tissue

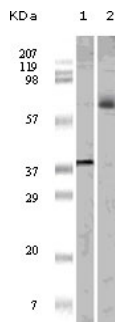


Figure 1. Western blotting validation for Anti-Elk1 Monoclonal Antibody M01426-1

Western Blot (WB) analysis using Elk1 Monoclonal Antibody against truncated ELK1 recombinant protein (1) and K562 cell lysate (2).

Electrophoresis was performed on a SDS-PAGE gel. To determine SDS-PAGE gel concentration

Submit a product review to Biocompare.com

Submit a review of this product to Biocompare.com to receive a \$20 Amazon.com giftcard! Your reviews help your fellow scientists make the right decisions. Thank you for your contribution.



Anti-Elk1 Monoclonal Antibody