

Anti-Perforin Prf1 Antibody (Monoclonal, CE2.10)

Catalog Number: M01429

About Prf1

PRF1, also known as Perforin-1, is a protein that in humans is encoded by the PRF1 gene. It is mapped to 10q22.1. PRF1 is a cytolytic protein found in the granules of Cytotoxic T lymphocytes (CTLs) and NK cells. Upon degranulation, PRF1 inserts itself into the target cell's plasma membrane, forming a pore. The lytic membrane-inserting part of perforin is the MACPF domain. This region shares homology with cholesterol-dependent cytolysins from Gram-positive bacteria. PRF1 has structural and functional similarities to complement component 9 (C9). Like C9, this protein creates transmembrane tubules and is capable of lysing non-specifically a variety of target cells. This protein is one of the main cytolytic proteins of cytolytic granules, and it is known to be a key effector molecule for T-cell- and natural killer-cell-mediated cytotoxicity. PRF1 is thought to act by creating holes in the plasma membrane which triggers an influx of calcium and initiates membrane repair mechanisms. These repair mechanisms bring perforin and granzymes into early endosomes.

Overview

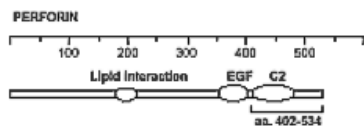
Product Name	Anti-Perforin Prf1 Antibody (Monoclonal, CE2.10)
Reactive Species	Human, Mouse
Description	Boster Bio Anti-Perforin Prf1 Antibody (Monoclonal, CE2.10) (Catalog# M01429). Tested in IP, WB application(s). This antibody reacts with Human, Mouse.
Application	IP, WB
Clonality	Monoclonal CE2.10
Formulation	Liquid. In PBS containing 0.02% sodium azide.
Storage Instructions	Store at -20°C for one year. For short-term storage and frequent use, store at 4°C for up to one month. Avoid repeated freeze-thaw cycles.
Host	Mouse
Uniprot ID	P10820

Technical Details

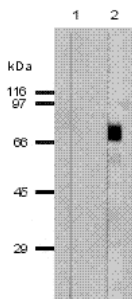
Immunogen	Recombinant mouse perforin (aa 98-534)
Predicted Reactive Species	Chimpanzee, Hamster
Cross Reactivity	Detects ~85kDa.
Isotype	IgG2a
Form	Liquid
Concentration	0.5-1mg/ml, actual concentration vary by lot. Use suggested dilution ratio to decide dilution

	procedure.
Purification	Protein G Purified
Suggested Dilutions	<p>Dilute the sample so that the expected range of concentrations fall within the detection range of this kit.</p> <p>If the expected range of concentration is unknown, a pilot test should be conducted to decide the optimal dilution ratio for your samples.</p> <p>Some PubMed article(s) citing the expression level of this target are as follows:</p> <p>Boster Bio's internal QC testing used:</p> <p>Immunoprecipitation: human and mouse</p> <p>Western Blot: mouse only</p> <p>Optimal conditions must be determined individually for each application.</p>

Anti-Perforin Prf1 Antibody (Monoclonal, CE2.10) (M01429) Images



Schematic structure of mouse perforin (recombinant, aa 98-534). The antibody recognizes an epitope within aa 402-534.



Western blot analysis of Perforin expression in control HEK 293 whole cell lysates (lane 1), mouse T cell clone B6.1 lysates (lane 2). Perforin migrates around 66kDa was detected using mouse anti-Perforin monoclonal antibody (Catalog # M01429) at 1

Submit a product review to Biocompare.com

Submit a review of this product to Biocompare.com to receive a \$20 Amazon.com giftcard! Your reviews help your fellow scientists make the right decisions. Thank you for your contribution.



Anti-Perforin Prf1 Antibody (Monoclonal, CE2.10)