

## Anti-DDB2 Mouse Monoclonal Antibody [Clone ID: OTI2E12]

Catalog Number: M01430

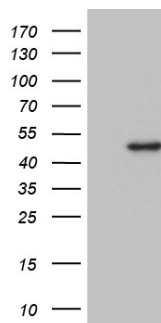
### Overview

Product Name	Anti-DDB2 Mouse Monoclonal Antibody [Clone ID: OTI2E12]
Reactive Species	Human
Description	Boster Bio DDB2 mouse monoclonal antibody, clone OTI2E12. Catalog# M01430. Tested in WB. This antibody reacts with Human.
Conjugate	Unconjugated
Application	WB
Clonality	Monoclonal OTI2E12
Formulation	PBS (pH 7.3) containing 1% stabilizing protein, 50% glycerol and 0.02% sodium azide. This antibody is supplied in a stabilized formulation. Compatibility with conjugation reactions depends on the chemistry of the conjugation method used. For conjugation methods that are not compatible with the stabilizing components present in this formulation, a carrier-free antibody format is required.
Storage Instructions	Store at -20°C for one year. For short term storage and frequent use, store at 4°C for up to one month. Avoid repeated freeze-thaw cycles.
Host	Mouse
Uniprot ID	Q92466

### Technical Details

Immunogen	Human recombinant protein fragment corresponding to amino acids 1-250 of human DDB2 (NP_000098) produced in E.coli.
Isotype	IgG1
Concentration	1 mg/ml
Purification	Purified from mouse ascites fluids or tissue culture supernatant by affinity chromatography (protein A/G)
Suggested Dilutions	WB 1:500

## Anti-DDB2 Mouse Monoclonal Antibody [Clone ID: OTI2E12] (M01430) Images



HEK293T cells were transfected with the pCMV6-ENTRY control (Left lane) or pCMV6-ENTRY DDB2 (Right lane) cDNA for 48 hrs and lysed. Equivalent amounts of cell lysates (5 ug per lane) were separated by SDS-PAGE and immunoblotted with anti-DDB2 (1:500).

### Submit a product review to Biocompare.com

Submit a review of this product to Biocompare.com to receive a \$20 Amazon.com giftcard! Your reviews help your fellow scientists make the right decisions. Thank you for your contribution.



Anti-DDB2 Mouse Monoclonal Antibody [Clone ID: OTI2E12]

For Research Use Only. Not for use in diagnostic procedures.