

Anti-CD32A (FCGR2A) Mouse Monoclonal Antibody [Clone ID: OTI13D7]

Catalog Number: M01450-1

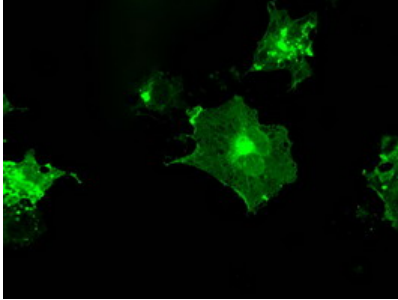
Overview

Product Name	Anti-CD32A (FCGR2A) Mouse Monoclonal Antibody [Clone ID: OTI13D7]
Reactive Species	Human
Description	Boster Bio FCGR2A (CD32) mouse monoclonal antibody, clone OTI13D7 (formerly 13D7). Catalog# M01450-1. Tested in IF, IHC, IP, WB. This antibody reacts with Human.
Conjugate	Unconjugated
Application	IP, IF, IHC, WB
Clonality	Monoclonal OTI13D7
Formulation	PBS (pH 7.3) containing 1% stabilizing protein, 50% glycerol and 0.02% sodium azide. This antibody is supplied in a stabilized formulation. Compatibility with conjugation reactions depends on the chemistry of the conjugation method used. For conjugation methods that are not compatible with the stabilizing components present in this formulation, a carrier-free antibody format is required.
Storage Instructions	Store at -20°C for one year. For short term storage and frequent use, store at 4°C for up to one month. Avoid repeated freeze-thaw cycles.
Host	Mouse
Uniprot ID	P12318

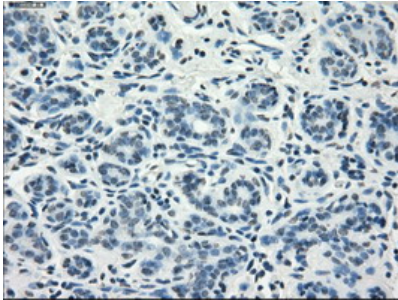
Technical Details

Immunogen	Full length human recombinant protein of human FCGR2A (NP_067674) produced in HEK293T cell.
Isotype	IgG2b
Concentration	1.09 mg/ml
Purification	Purified from mouse ascites fluids or tissue culture supernatant by affinity chromatography (protein A/G)
Suggested Dilutions	WB 1:200 - 1:1000 IHC 1:50 IF 1:100 IP 2ug/500ul

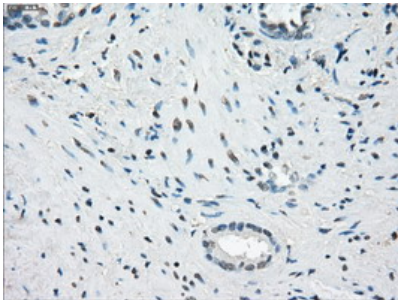
Anti-CD32A (FCGR2A) Mouse Monoclonal Antibody [Clone ID: OTI13D7] (M01450-1) Images



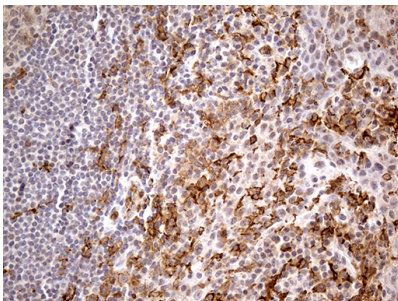
Anti-FCGR2A mouse monoclonal antibody (M01450-1) immunofluorescent staining of COS7 cells transiently transfected by pCMV6-ENTRY FCGR2A.



Immunohistochemical staining of paraffin-embedded Human breast tissue within the normal limits using anti-FCGR2A mouse monoclonal antibody. (Heat-induced epitope retrieval by 10mM citric buffer)

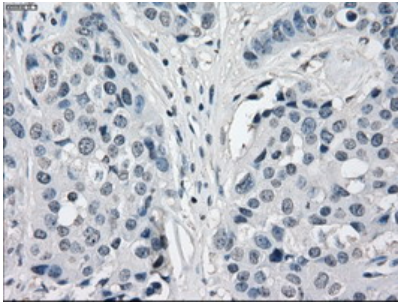


Immunohistochemical staining of paraffin-embedded Carcinoma of Human prostate tissue using anti-FCGR2A mouse monoclonal antibody. (Heat-induced epitope retrieval by 10mM citric buffer)

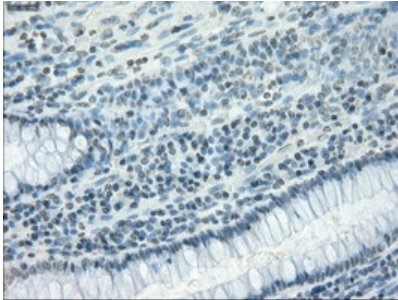


Immunohistochemical staining of paraffin-embedded Human tonsil within the normal limits using anti-FCGR2A mouse monoclonal antibody. (Heat-induced epitope retrieval by 1mM EDTA in 10mM Tris buffer (pH8.5) at 120°C for 3min)

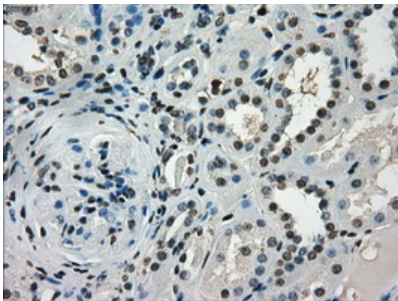
Immunohistochemical staining of paraffin-embedded Adenocarcinoma of Human breast tissue using anti-FCGR2A mouse monoclonal antibody. (Heat-induced epitope retrieval by 10mM citric buffer)



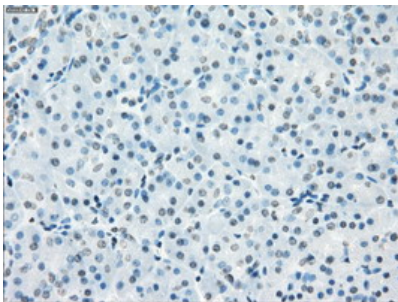
Immunohistochemical staining of paraffin-embedded Adenocarcinoma of Human colon tissue using anti-FCGR2A mouse monoclonal antibody. (Heat-induced epitope retrieval by 10mM citric buffer)



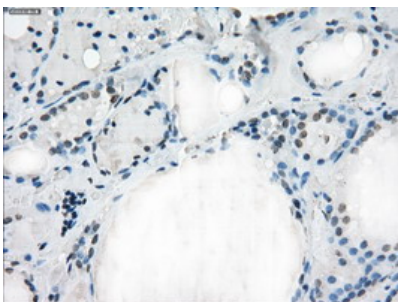
Immunohistochemical staining of paraffin-embedded Human Kidney tissue within the normal limits using anti-FCGR2A mouse monoclonal antibody. (Heat-induced epitope retrieval by 10mM citric buffer)



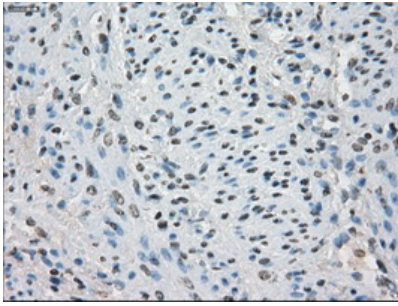
Immunohistochemical staining of paraffin-embedded Human pancreas tissue within the normal limits using anti-FCGR2A mouse monoclonal antibody. (Heat-induced epitope retrieval by 10mM citric buffer)



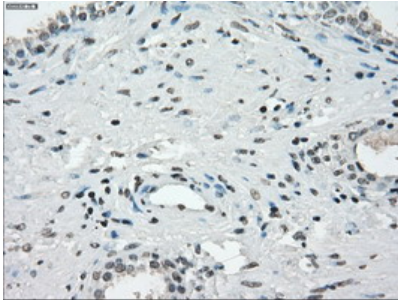
Immunohistochemical staining of paraffin-embedded Human thyroid tissue within the normal limits using anti-FCGR2A mouse monoclonal antibody. (Heat-induced epitope retrieval by 10mM citric buffer)



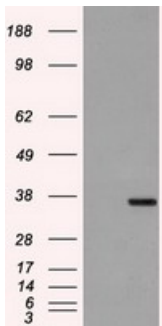
Immunohistochemical staining of paraffin-embedded Human endometrium tissue within the normal limits using anti-FCGR2A mouse monoclonal antibody. (Heat-induced epitope retrieval by 10mM citric buffer)



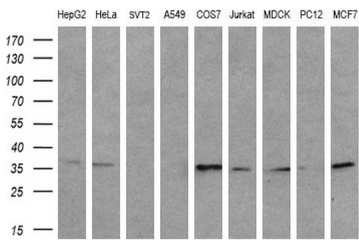
retrieval by 10mM citric buffer



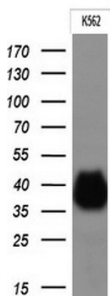
Immunohistochemical staining of paraffin-embedded Human prostate tissue within the normal limits using anti-FCGR2A mouse monoclonal antibody. (Heat-induced epitope retrieval by 10mM citric buffer)



HEK293T cells were transfected with the pCMV6-ENTRY control (Left lane) or pCMV6-ENTRY FCGR2A (Right lane) cDNA for 48 hrs and lysed. Equivalent amounts of cell lysates (5 ug per lane) were separated by SDS-PAGE and immunoblotted with anti-FCGR2A.

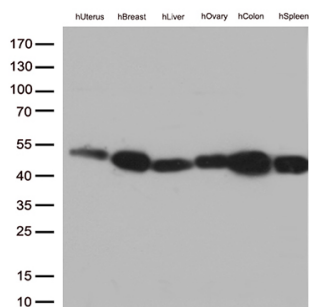
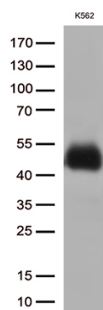


Western blot analysis of extracts (35ug) from 9 different cell lines by using anti-FCGR2A monoclonal antibody (HepG2: human; HeLa: human; SVT2: mouse; A549: human; COS7: monkey; Jurkat: human; MDCK: canine; PC12: rat; MCF7: human) (1:200).



Western blot analysis of extracts (10ug) from 1 cell line by using anti-FCGR2A monoclonal antibody at 1:200.

Western blot analysis of extracts (35ug) from 1 cell line lysate by using anti-FCGR2A monoclonal antibody (1:500).



Western blot analysis of extracts (35ug) from 6 tissue lysates by using anti-FCGR2A monoclonal antibody (1:500).

Submit a product review to Biocompare.com

Submit a review of this product to Biocompare.com to receive a \$20 Amazon.com giftcard! Your reviews help your fellow scientists make the right decisions. Thank you for your contribution.



Anti-CD32A (FCGR2A) Mouse Monoclonal Antibody [Clone ID: OTI13D7]

For Research Use Only. Not for use in diagnostic procedures.